

# The Northerner

Volume 19, Number 3

Northern Kentucky University

Wednesday, September 6, 1989

## Graeter's scoops NKU

JEFF BOHR  
FEATURES EDITOR

On the first floor of the University Center, nestled between the bookstore and game room, is Graeter's Ice Cream store. The store, formerly St. Moritz Ice Cream, became Graeter's on July 6. Although still remodeling, Graeter's is fully functional and able to scoop out whatever ice cream treats they have on their large menu board.

Graeter's at Northern boasts a full ice cream menu. Regular and special ice cream flavors, ices, sundaes, malts, shakes and their famous double dip sodas are always available. Prices range from \$.89 for an old-fashioned phosphate (a carbonated fruit-flavored drink) to \$3.25 for a hand-packed pint of one of their special ice cream flavors. Homemade chocolates and candies are also kept on hand.

Peg Christy, manager of Graeter's, is looking forward to serving students this fall. After remodeling, Christy would "like to have art students... lend art to hang on the walls" and brighten up the atmosphere. If anyone is interested in having their work on display, stop by or call 572-6444.

Graeter's will have special coupons in *The Northerner*, Christy said, so students will be able to get reduced prices on the delicious ice cream. Christy also said that Graeter's at Northern is available for private group functions. The store will open on request during non-business hours for private groups if the size of the gathering qualifies.

The Graeter's store at Northern is the

fourth store opened in Kentucky owned by Lyle Brumfield, Christy said. Brumfield recently opened a Graeter's in Louisville, and Christy says that future plans include more locations around Kentucky. Future plans for the Northern location include adding another entrance to Graeter's by way of the tunnel connecting the University and Administrative Centers.

All Graeter's stores in Northern Kentucky are currently hiring, Christy said, although the location at Northern is not. Working with Christy is David Godbey, 19, a second-year theater major at Northern. Peg and David are looking forward to seeing new faces at Graeter's this school year.

Although the weather may grow colder, Graeter's hours will remain the same. Graeter's at Northern is open 11:00 a.m. to 6:15 p.m. Monday through Thursday, and 11:00 a.m. to 5:00 p.m. on Friday.



Above: Right Kahlil Lowory (secretary) and left Thomas Turner (president) dramatizes the theater program during the student rally last Thursday and Friday. Photo by Scott Rigney.

## Registrar makes improvements

MARLENE KINMAN  
STAFF WRITER

"One-stop shopping" is here!

Three years ago, on August 7, the Registrar Services began making plans for improvement. Now these plans have become a reality.

Now students can register for classes, request a transcript or enrollment verification, drop a course, and declare a major all in one location--the Service Center, Administrative Center 301--and without waiting in alphabetical lines. Registrar Jerry Legere calls the plan, which focuses on putting "students first," "one-stop shopping."

Under the new structure, registrar services are no longer divided between the Registration Center and Student Records. Instead, all in-person requests for registrar services are handled promptly and courteously in the Service Center by the next available Service Representative. Service Representatives, trained to perform all the services once done in both the Registration Center and Student Records, have eliminated the need for students to walk back and forth between the two offices (and sometimes back again) for different registrar services. This improvement allows students to simply go to the Service Center. Mail requests are handled separately, in the Processing Division (AC 302).

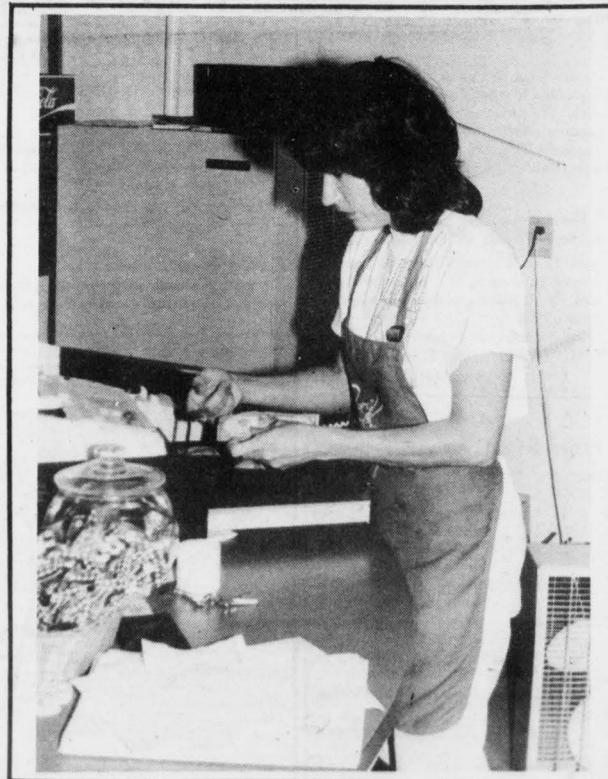
A goal of the Service Center, Legere  
See REGISTRAR page 3

## Inside:

**News:** Northern singers went on a European adventure during the summer.  
Page 3.

**Features:** Art major is recognized for her outstanding talent.  
Page 6.

**Sports:** Plans to build new arena are questioned due to low sports attendance.  
Page 10.



Above: Coolly attending to the needs of Northern's ice cream fanatics is Peg Christy, manager of Graeter's Ice Cream. Photo by Scott Rigney.

*Public Safety provides more parking spaces*

**MICHELLE WILLOUGHBY**  
STAFF WRITER

It's that time of the year again when finding a parking space is a time-consuming endeavor. But, not to worry assures Public Safety Director John Connor. Every fall, parking is hectic for the first few weeks, new students do not know where to park. This fall we have had a little more traffic than last semester due to the increase of enrollment.

This year enrollment reached an all time high of 10,300. Vice-President Gene Scholes of Administrative Affairs said, "At the end of the last semester we had 3,500 parking spaces on campus. We have added another 600 spaces for a total of 4,200 parking spaces. We have sufficient parking for the students which don't come at the same time.

Vice-President Scholes continued that the same went for handicapped parkers.

"While we have over 100 handicap parkers, they all don't come at the same time." He said, "We monitor very closely the number of parking places that are required for handicap parking."

"Also, we have a Parking and Traffic Patrol committee made of faculty members, student representative, Public Safety and Physical Plant. The committee receives proposals concerning improvements for parking in regards to handicap parking, we don't see the need for expansion in the number of handicap spaces. If the need would come to exist, we will certainly do it," Scholes said.

Plans are being made for structure parking.

"We have requested in the Biennial Budget request for university authorization to construct a parking garage to go to Lot J," said Scholes. "They would give us authorization to spend institutional funds. We would have to cut some mechanism through fee assessment to fund the debt service, plus if we build it in Lot J, we will have completed our new concert hall in the Fine Arts Building, where we can use it for reserved parking and generate revenue."

But, all these policies have yet to be worked out, Scholes said. The department is leaning towards building a parking structure as opposed to surface parking, he added.

According to Public Safety, they have been able to cope. They were forewarned about the situation. They made moves to accommodate the influx of enrolled students. They brought in extra people to ensure adequate control.

For instance, they have officers located at the I-275 exit, so that traffic does not back up on the ramp. The peak hours for congested parking are from 8:30 - 10:00 a.m. By 10:00 a.m., almost every space is unavailable.

Public Safety have been busy in trying to rectify the shortage of parking places.  
See **PARKING** page 16



*Above: Looking for your car? Could have sworn you parked there. NKU is expanding its parking situation. Photo by Scott Rigney.*

## Campus parking

### Information on new lots

AS OF AUGUST 31, 1989:

• *Visitor Parking*

33 spaces are provided near Regents Hall.

•*Student Parking*

Approximately 600 additional spaces have been recently created to expand parking for students (see map for locations). Approximately 3,500 spaces are now available for students.

• *Handicapped Parking*

Located throughout the campus, these reserved spaces now number about 62.

• *Faculty and Staff Parking*

Approximately 148 additional spaces were recently added (Lot B and near the Applied Science and Technology building) to bring the total spaces for employees to about 700.

•Total Campus Parking: 4,300 spaces

(Source: John B. Connor, Director, Dept. of Public Safety)

## The Northerner Staff

**Advertising Manager.....Tami Cornelius**

**Assistant Ad Manager.....Lem Davis**

**Business Manager..... Mike Wright**

**Copy Editor.....Marta Stauber**

**Features Editor.....Jeffrey Bohr**

**Distribution Managers.....**Shelly Helmer  
& Melissa Yates

**News Editor.....Barb Bolender**

**Sports Editor.....Don Owen**

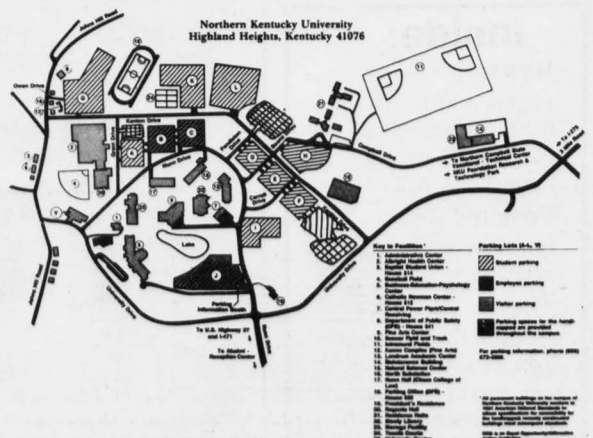
**Photo Editors.....Marijo Krider**

ECON. ANALYSIS

Typesetter—Mendy Koons

Cartoonist.....Dave Cowles

Advised \_\_\_\_\_ Jack Crown



## REGISTRAR from front page

said, is to "provide immediate service to the individual." In keeping with that goal, his office has made improvements in its two areas of highest demand: transcript requests and enrollment verification. Transcripts, which used to require a two-day waiting period, are now available (at no increased cost) the next day after the request. Waiting time for enrollment verifications has been reduced from five days to two days, and some enrollment verifications can be processed immediately.

Even though there have been a few problems with the new structure, Legere said registrar services are "60 percent improved over just a month ago."

The Service Center is open 8:15 a.m. to 6:15 p.m. Monday through Thursday; the Center closes at 4:30 p.m. on Friday.

The Office of the Registrar has three basic areas of responsibility: 1) registration, 2) academic records maintenance, and 3) graduation processing.

# Northern singers tour London over summer

## NORTHERN STAFF REPORT

The program read "Northern Kentucky University Department of Music presents a Choral Concert in England" and listed the concerts at St. Margaret's Church, Canterbury Cathedral, and a foyer concert at the Royal Festival Hall. On May 15, 1989, a group of thirty-one singers, spouses, and professors left the Cincinnati airport enroute to London, England embarking on the longest tour to date and the first European adventure for any musical ensemble at Northern.

The tour was a culminating activity to a sabbatical stay in London by Dr. Westlund, director of Choral activities at Northern, during the 1988 Spring semester. While on sabbatical, Dr. Westlund fell in love with the people, the churches, the culture of the theaters and concerts, and the vibrant activity of London and the surrounding areas and became determined to share his experiences with the students at NKU.

The contacts he made while on sabbatical enabled him to plan an extremely full week of activities for the choir. In addition to the concerts, students enjoyed the musicals *Les Miserables* and *Me and My Girl*, a disco cruise on the Thames, the sights of Windsor Castle, Tower of London, St. Paul's, Westminster Abbey, and a "shop till you drop" attitude to fill in the few precious moments of unscheduled time.

On Sunday, our last day, a small group went to early communion at St. Paul's, back to Trafalgar Square for breakfast, on to Westminster Abbey to hear the boy's choir at the morning service, to the bus for a trip to Cambridge where we were charmed by the punts on the River Cam and inspired at the evensong by the boy's choir of the King's College Chapel, and back to London to pack. Such were our days on tour and we arrived home exhausted but smiling, ready to share gifts from the Hard Rock Cafe, Harrods, and Wimbledon with family and friends waiting to greet us.

## Chorale Singers needed

### NORTHERN STAFF REPORT

There is a nationwide trend in higher education for male singers not to participate in University choral groups according to Dr. Westlund, NKU professor of choral music. It appears that the male singer "crunch" has reached NKU. "I know that out of 10,000 students at NKU there are plenty of singers at the University who have the talent, interest, and time to participate in the Northern Chorale but they simply have not been encouraged to do so nor apprised of the opportunity for participation in such groups.

The Northern Chorale has begun auditions for this semester, and is a well balanced ensemble with ten sopranos,

twelve altos, seven tenors, but only three basses. It will only take four or five bass singers to balance the other parts of this fine ensemble. Interested parties will find a ready-made ensemble just waiting for them to join.

Last year's choir tour to London, England brought a new spirit of commitment and dedication among the returning singers. Unfortunately, those returning singers did not include some of the basses on the tour and, therefore, some new singers are needed to fill those positions. If you are interested or know of someone who might be, contact Dr. Westlund in F. A. 336 or call him at 5286. Enrich your college experience by identifying with this fine musical organization.

## Letters to the Editors

*All letters must be typed or clearly printed and limited to 200 words or less. Letters are due in THE NORTHERNER office by Noon Thursday for publication on Tuesday.*

*Each letter must include the author's name and phone number. We can under special circumstances protect the author's anonymity.*

*Each letter will be printed verbatim. However, the editorial staff reserves the right to edit for space and sense. We also reserve the right to edit objectionable material.*

*THE NORTHERNER reserves the right not to publish any letter if the above criteria are not met.*

## Boothe reappointed AASCU chairperson

MARILYNN ANDERSON  
STAFF WRITER

NKU President, Leon Boothe was recently reappointed for a second three-year term as chair of the "Committee on International Programs" by the American Association of State Colleges and Universities.

AASCU is the largest organization of public institutions of higher education in the United States, and it's known in the international arena as being the most active of the national collegiate and university associations. It has sent exchange presidential sessions to every continent.

During Boothe's previous term, several major exchange agreements were signed with the Soviet Union, the People's Republic of China and Egypt.

Boothe explained that AASCU's purpose is to generate more exchange programs between colleges and universities in the U.S. and abroad. Boothe said that these educational missions go abroad to initiate more exchange programs for faculty and students.

Boothe said that he would like to see more educational missions sent to the Eastern Block, Africa, and the Middle East. "I will continue to speak out to open more doors for more exchanges for faculty and students." As for the future, Boothe said, "I envision... internships overseas, France and Japan."

Boothe said qualifications for chair requires a knowledge of international education. He acknowledged that it's a "very prominent position, and it brings national and international recognition to NKU."

According to Boothe, he participated in commencement exercises in Saudi Arabia in the summer of 1988.

The exchange agreement with Andhra University, located in Visakhapatnam, India, is slated to begin in 1990, Boothe said, with faculty participating first, then students will follow. The participants will not be required to pay tuition, but they are responsible for transportation cost, he said. Boothe added that "those participating in the exchange will first visit to avoid culture shock."



Left: Choir members Kathryn Toren and Barb Watson enjoy a relaxing moment on a bridge over the River Cam in Cambridge. Their shirts say it all! Photo by Scott Rigney.



# Viewpoint

September 6, 1989

## EDITOR

Melissa Lauer

## MANAGING EDITOR

Holly Jo Koons

## ASSOCIATE EDITOR

Tom Handorf

Editorials are written by the Editor, Managing Editor and Associate Editor of this publication. Opinions in this section do not necessarily reflect the views of the Adviser, writers or staff of *The Northerner*. Editorial replies and letters to the editor are welcome and encouraged.

## NFL giving fans the silent treatment

What is happening to the world of sports?

I thought I'd seen and done it all when I stayed awake through a whole Atlanta Braves baseball telecast, but nothing can top this new sports folly.

This new NFL noise rule has got to be the dumbest rule since the touchdown spiking or dancing ban.

For those of you who are unaware of the rule, I'll try to summarize it for you in simple terms. When the crowd noise gets too deafening for the quarterback to call signals, a whistle is blown and the home team is first given a warning for the crowd to, as Morton Downey, Jr. would say, "zip it!"

If the crowd noise persists, then the team gets one of their time outs taken away. After the time outs are depleted, they are then given a five-yard penalty.

I don't know about you, but isn't yelling and screaming a big part of the fan's enjoyment of going to a game? You don't go to a football game to sit there like you're at Sunday school and quietly admire all the genius that went into the play calling.

It's kind of hard to see how this really bothers football fans, but I have an example that gives you an idea of the magnitude of this rule.

Let's say that you go to one of those TV wrestling showcases. If you were not allowed to holler when your favorite actor...er, I mean wrestler, is going to get thumped from behind with a chair (that just so happens to be there I might add), it wouldn't be worth going. That's what's part of the fun of any event.

If rules of this preposterous nature continue, I could see what they would be like in the future. All football games would be two-hand tag, played with Nerf footballs, and no fans would be able to attend in person. But, if these changes were made, it would be better to watch *Super Sloppy Double Dare* anyway.

This rule is, in effect, going to throw the home field advantage right out the window. If your fans can't show their support by yelling, screaming and trying to fire the team up, then what good are they doing? The reason the Bengals had so much success in the *Jungle* last year was due to the tremendous fan support. Ask any of them.

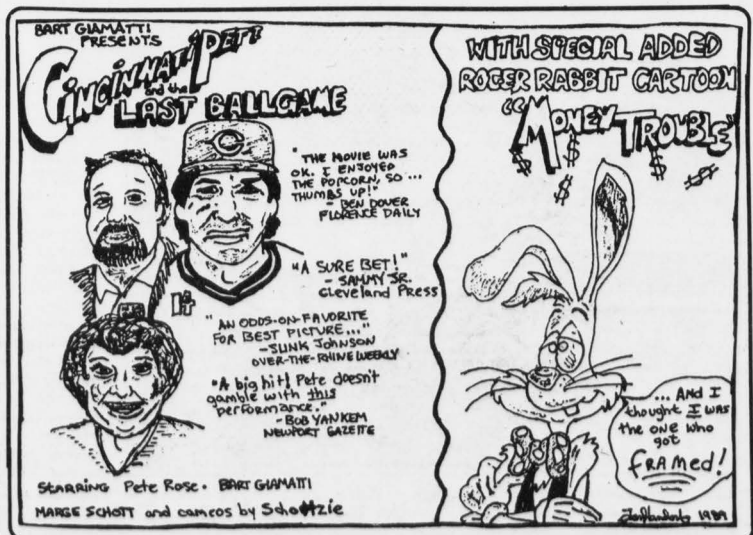
I guess that pretty soon the NFL will have undercover thugs in bars and living rooms across the country to bust cheering fans. It'll be a fiasco! I just hope they don't enforce this football noise rule to video games, or else I'll have to get rid of my Nintendo.

I just hope and pray the NFL realizes the mistake it has created. Football is just like a business. Without customers, you'll go out of business. Without fan support, sports will also go bankrupt. Just look at Midget Tossing as an example of that principle. Don't ask.

Just remember sports fans, Big Brother is watching, and if you cheer too loud, you could find yourself penalized.



*If Steven Spielberg had done the life story of Pete Rose ....*





# READER'S VIEWS



## It's time for the semester blues

**MARI BETH LIENHARDT**  
GUEST COLUMNIST

Things haven't been going well this week at all.

For one thing, classes started, I took two instructors I've had before, looking for that easy "A". Only now they have more stringent class policies. I have the department chair for a course. He made us write two papers in the first week of class. Then, there's the guy I haven't met yet, because he missed the first class and sent that department chair in his place. Overall, I think it's going to be a butt-busting semester.

For another thing, I moved over the weekend, in between writing the papers, of course. Only now, I can't walk through my much smaller apartment to get to the word processor. It's a mess, and I don't have time to care. I only have time to write papers. And to shop for particle board furniture to cram my much smaller apartment even fuller with useless things that I didn't need in my much larger apartment.

Particle board furniture. You know what that is. It's the furniture you buy at

Particle Board Furniture R Us stores. It's uncoated, unlaminated undersides look like compressed oatmeal and sawdust. You have to assemble it with a Phillips screwdriver that you packed away in the bottom of an unmarked box. Compressed oatmeal/sawdust furniture is manufactured (or recycled from garbage disposal droppings) expressly for poor people and starving students.

And I also have a theory about compressed oatmeal/sawdust furniture. I think it's a government plot. Just like mobile homes or trailers, or whatever you call those aluminum jobs. I think these things are treated with some kind of brain cell killing chemicals, the kind that eventually make you brain dead. Or just dead, so that all us poor people and starving students in mobile homes equipped with compressed oatmeal/sawdust furnishings don't stick around long enough to collect all that social security we've got coming to us. The system is bankrupt you know.

I really believe this. I myself have committed several brain dead acts since the coming of the oatmeal/sawdust stuff. I would tell you about them, but they are too embarrassing and you would never

again believe a word I would say.

But I digress. I was telling you what a bad week it's been. One of my fish died of trauma sustained during the move. He was too big to flush and too little to eat.

There isn't even a convenient, well-stocked video store in the neighborhood of my much smaller apartment.

Also, I had to throw away several pair of shoes, which traumatized me almost as badly as the fish. My much smaller apartment has much smaller closets, which is why I am financing the Particle Board Furniture R Us salesman's children's college education.

On a brighter note, my mail is keeping up with me. All those bills for the compressed oatmeal/sawdust furniture are starting to roll in. And I always thought the U.S. Postal Service was completely incompetent!

So, just as soon as the Unpacking and Box Removing Fairy comes to my much smaller apartment, I will be back on track and able to report much more interesting news next week. If the fumes from those brain cell killing chemicals don't ... jkfhej this glasp>

## Campus Corner

PAUL ELLIS

### LEARNING ASSISTANCE PROGRAM

Last year part-time faculty salaries were increased by \$100 per course--the first increase in over six years. This year it's back to business as usual: no change in part-time faculty salaries.

Last year's raise was decided upon before the University became aware of a rather sizable surplus in the University budget that resulted from a higher than expected 1988-89 student enrollment. The Administration asked full-time faculty for ideas on what to do with the surplus. One suggestion came from the Literature & Language Composition Committee, at that time comprised of Danny Miller, Mary Ann Weiss, Tom Zaniello, and myself.

The suggestion was made in a memorandum sent by the Composition Committee to the Administration. A part of the memorandum made the following request: "Though we are sympathetic with full-time faculty members' desire for an increase in their salaries, we think we should also consider the salaries of those we hire to teach the additional classes made necessary by the higher student enrollment--the salaries of our part-time faculty."

I am not aware that our suggestion received any serious consideration. In fact, I don't know what was done with last year's surplus funds, but I do know part-time faculty received a 0% salary increase this year and for the eighth time in the 1980's.

Why is the salary level of part-time faculty persons important? First of all, though salaries for part-time university faculty across the country are depressingly low (and seldom include employee benefits like health insurance and retirement programs), NKU part-time salaries are among the lowest. A person with a Masters Degree here makes as little as \$1,000 and no more than \$1,200 per semester course. Compare these figures with those of other nearby institutions: University of Kentucky (\$1,700), Eastern Kentucky University (\$1,250), Berea College (\$2,000), University of Cincinnati (\$1,350 per quarter course--a third fewer total working hours than in the semester system).

It may surprise you to know that approximately one out of every four classes offered by Northern Kentucky University is taught by a part-time faculty member, and in some departments more than one out of every two is taught by part-time faculty. And the number of part-time faculty persons is increasing every year. This University, one that prides itself on fine teaching and putting "students first," should be more concerned with the quality and morale of its part-time faculty. The University

See EDITORIAL page 16

# • Features •

## Art major prepares for NKU exhibition

**KELLI MCCARTHY**  
STAFF WRITER

Susan Nuxoll, an N.K.U. senior art major, has recently been recognized for her talent in several art exhibits. Since having four exhibits last year at N.K.U. and having prints in the Library of Congress and the Yale University's permanent collections, she is presently preparing for the first art exhibit at N.K.U. this fall.

The first exhibit in which Susan's collection of paintings, mixed media drawings, monotypes and sculptures will appear is called, "Critic's Choice into the Ninety's." This show will be done by Daniel Brown, an established art collector, and will run from September 22

Susan's recognition is not only local. Her prints will be shown in October at the University of Arkansas. Next summer she will have a solo exhibition in the Katz and Dawgs Gallery in Columbus. In the past, she has been reviewed by local art critic, Owen Findsen of the Cincinnati Enquirer and by Fran Watson of the Art Academy News.

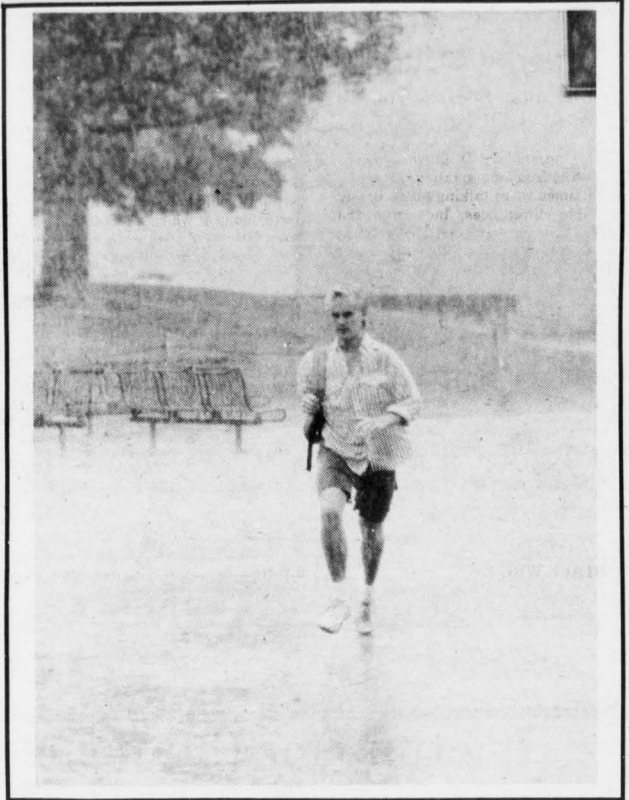
Besides being a recognized artist, Susan is also involved in many other aspects of campus life here at Northern. She is currently the secretary of external affairs for Student Government, a member of the Activities Programming Board, a member of Stage One, and the campus coordinator for Student Advocates for Higher Education.

Susan will graduate next spring with a Bachelor of Fine Arts Degree in drawing, printmaking, and painting. Her final mark at Northern will be the works she displays at the senior show in the spring. As far as future plans are concerned, Susan says she'll go to graduate school, but is not yet sure of where she will go.

- October 15 in the N.K.U. Art Gallery located in the Fine Arts building. A free opening reception will be given the first night from 7 - 10 p.m. Susan is not only the only undergraduate student featured in this show, she is also the youngest.



Above: *In the Eye of the Beholder, Stone Lithograph 22 X 30, by Susan Nuxoll. Photo by J. Thieret.*



Above: *Look out for that puddle! An unidentified student runs across campus during last Friday's down pour! Photo by Scott Rigney.*

## Movie is not what it seems

**JARED BARLAGE**  
STAFF WRITER

Men learn to love the women they are attracted to, and women become more attracted to the men they love. That is James Spader's philosophy of sex as Graham in the movie *Sex, Lies and Videotape*.

His philosophy sounds like he has it all together. However, he has his share of problems. Being sexually impotent, his only sexual excitement is videotaping strange women as they discuss their sex history and habits, then watching the tapes.

Graham is not the only one with problems. John (Peter Gallagher) is having sex with his wife's sister, Cynthia (Laura San Giacomo) on a regular basis.

Neither seem to see a moral wrong with their relationship with Ann (Andie MacDowell), John's wife and Cynthia's sister.

The main character, Ann, is the typical housewife. Unlike her sister, Ann is turned off by sex and is seeing a sex therapist. She finally confronts her problems and comes to terms with who she is, who her sister is, and who her husband is. John, Graham, and Cynthia then realize their own self delusions.

*Sex, Lies and Videotape* benefits from a simple cast of only four main characters. This helps the film from becoming too wrapped up in side stories. The focus of this movie is on the psychological problems of these characters. If you are going to see this film only for the title, don't. It is not what you will expect.

# Northern Sights and Sounds

CLARENCE "WOODY"  
WOODS  
NKU AUDIO ENGINEER

## All Compact Disc Players Sound Alike Because They're Digital! Right?

No, no, no! CD players sound different from one another. Granted, sometimes we're talking about barely audible differences, but often the differences are very great. Let's look at what makes some CD players sound better (or at least different) than others. It appears that some of the most audible differences in CD players occur in the analog sections. Remember that CD players are not strictly digital. They are digital, analog and mechanical. First we will look at some of the differences which affect sound quality in the analog domain.

Analog signal paths should be short and go through a minimum number of devices to maintain purity of sound. A sensible chassis layout and separate power supplies can help to isolate analog stages and keep out unwanted noise and distortion. Different parts of the player, to avoid interaction, should draw their power from a large power supply, or ideally, discreet power supplies. A CD player loaded with features in a low price range is almost certainly going to be built with low cost parts, many of which affect the sound. Manufacturers have been known to kill the sound of relatively good designs to save \$5.00 on parts list by using inexpensive capacitors. Better capacitors made of mylar, polystyrene or polypropylene cost a manufacturer more and therefore cost you more. There is, however, a difference in sound. The old saying "you get what you pay for" come to mind?

Because CD players are also mechanical devices containing servos, motors, loading mechanisms, etc., and subject to internal and external vibration, there are many structural considerations. For the laser assembly to correctly read those tiny microscopic pits on the surface of a compact disc, vibration must be kept to a minimum. One of the easiest ways of reducing vibration is through sheer mass. A heavy, acoustically dead player can sound better just because it weighs sixteen pounds.

If a player weighs only six pounds it probably uses a highly resonant molded plastic transport which will be affected by the bass sounds from your speakers. You may have run into similar problems when turntables are too close to speakers.

CD to be continued next week

## Uncle Buck is worth six bucks

AMY GILB  
STAFF WRITER

John Candy's latest movie, *Uncle Buck*, will keep you laughing from start to finish. There are some moments of seriousness, but those scenes are soon

followed by lighthearted Candy humor.

The movie was written, produced and directed by John Hughes who also directed *Planes, Trains and Automobiles*, *Ferris Bueller's Day Off* and *Weird Science* to name a few.

Buck Russell is a carefree, fun-loving

Chicago bachelor who has trouble keeping a job. He is asked to care for his brother's children during a family crisis when his brother and sister-in-law have to go to Indianapolis. Buck packs up and moves into his brother's suburban home. His two nieces and nephew don't know him very well, and the eldest niece, 15-year-old Tia, is mortified by Buck's unorthodox behavior.

Buck isn't used to taking care of a household. He cleans clothes in the microwave, feeds the dog five times a day, and fixes food that he loves to eat, which doesn't look the slightest bit appetizing to the kids. But he grows attached to the kids and becomes really concerned about their well-being as they become very fond of him.

The youngest niece, Maizy, is too much of a dreamer, according to her principal at school. During a meeting with the principal, Buck tells her off and leaves her speechless. When an inebriated clown shows up at his nephew,

Miles' birthday party smelling like alcohol, Buck confronts him with a knock-out punch. When Buck sees that a young punk is trying to take advantage of his niece, Tia, he goes to great lengths to protect her from harm and even teaches the boy a lesson in an unforgettable way.

John Candy plays the kind of character that actually does what most people only think about doing. Buck Russell doesn't care what others think. He tells it like it is and does it like he feels, and along the way, learns a little bit more about himself.

*Uncle Buck*, a Universal Studios release, is currently showing at Florence Cinema and other USA Cinemas. It is well worth six dollars, filled with touching moments and lots of laughs.

## Laser Picks

LISA ELLIS  
GUEST COLUMNIST

The Atlanta-based duo of longtime friends, Emily Saliers and Amy Ray, has finally arrived on the "New Folk" scene with their self-titled debut release.

When listening to the Indigo Girls, one of the first things you notice are their intricate harmonies.

Secondly, you notice how intimate the lyrics are, both to Saliers and Ray, and to the listener.

Like their "Folk-mates", Suzanne Vega and Tracy Chapman, the Indigo Girls sing of love won and lost, life's trials and tribulations, and social justice.

The Indigo Girls' first release from the disc is "Closer to Fine", Saliers' condemnation of academia in America: "I spent four years prostrate to the higher mind, got my paper and I was free."

Another favorite of mine on the disc is "Blood and Fire", a song about the all-consuming emotion of love, penned by Amy Ray: "I am looking for someone, who can take as much as I give, give back as much as I need, and still have the will to live."

In this day and age of over-produced albums, it is nice to hear the "stripped down sound" of the Indigo Girls. Most of the songs feature Saliers' and Ray's acoustic guitars and vocals backed by studio musicians, however, members of R.E.M. and Hothouse Flowers help the girls out on a couple of tracks.

The sound quality of the disc and the Indigo Girls' performance make this release an excellent choice for any "new folk" enthusiast, or anyone who wishes to expand their musical horizons.

Sound Quality: 9 (out of ten)  
Performance: 10

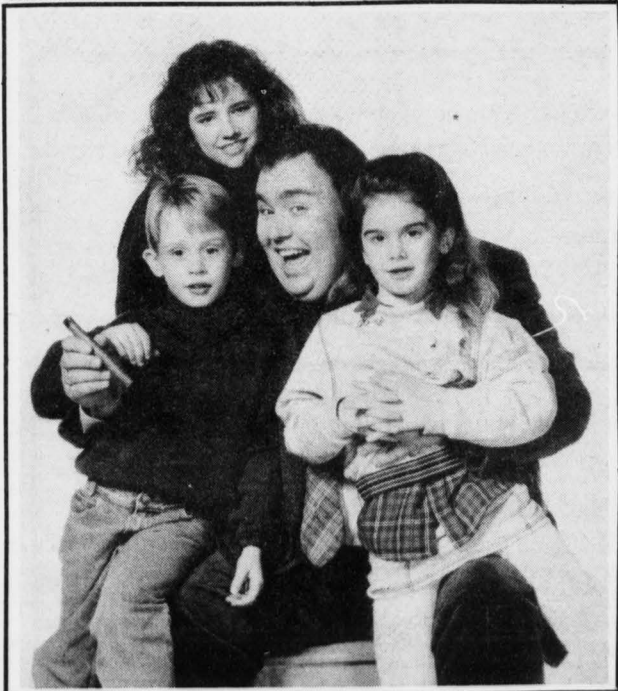
The release of *Faith* ended George Michael's partnership with Andrew Ridgeley in Wham, and it also ended Michael's squeaky clean boy-next-door image.

This resulted from the release of his first single from the disk, *I want your sex*.

Many people were outraged, while Michael's listeners smiled and enjoyed the joke.

On the heels of *I want your sex*, came *Faith*, a delightfully singable tune. Other hits from the disc include: *Father Figure*, *Monkey*, *Kissing A Fool*.

*Faith* is definitely one of the best discs available, as a result of George Michael's performance and the clarity of the disc.





## Bad weather drowns out symphony

OWEN HUFF  
STAFF WRITER

Music of the night—that's what was to be in the air Friday evening, Sept. 1, on NKU's campus.

Mother Nature, however, saw fit to cancel the scheduled Cincinnati Symphony Orchestra's outdoor concert in favor of a little Water Music of Her own.

If you were one of the disappointed many greeted by a friendly campus policeman and told to go home there's nothing to hear here, fear not—the CSO soon begins its 95th season of what promises to be an exciting array of upcoming concerts in acoustically perfect and perfectly dry Music Hall.

On Friday, Sept. 15, at 11:00 a.m. and Saturday, Sept. 16, at 8:30 p.m. Jesus Lopez-Cobos will conduct pianist Jorge Bolet and the Women of the May Festival Chorus as the CSO performs Beethoven's Symphony No. 10 (Fragment) and three pieces by Franz Liszt, Piano Concerto No. 2, Totentanz and Dante Symphony.

Listen for the works of Bizet, Mozart, Strauss, Schubert and Schumann as well as the leading composers of this century—in their performances.

Classical music not exactly your forte? Beatles and Broadway more your style?

Then may I suggest a plentiful portion of the POPS.

Fab Four fans will go GOO GOO GAWJOOB Saturday, Oct. 14, as Erich Kunzel conducts The Music of the Beatles plus an appearance by Tommy Tune, Broadway's premiere song and dance man.

Later gigs include A Tribute to Arthur Fiedler, A Holiday Festival of Lights with the School for the Creative and Performing Arts Children's Choir and May Festival Chorus, A Cole Porter Celebration, Ray Charles will feel his way around stage and the contemporary Jazz sounds of Dave Brubeck and Take Five.

That's just a sample of all the CSO has to offer this season. For more information call the Music Hall Box Office at 721-8222, then inject yourself with a little classic culture. CSO-ces't manifique!



# CALENDAR

## 7

Thursday

- New adult students can attend a night of orientation and hospitality from 6 - 8 p.m. in the TV lounge on the first floor of UC. Ask questions, enjoy refreshments, and meet new friends.

- The New York City Swing Band performs Top Forty, Swing, R&B and more at 8 p.m. on the UC plaza. It's free, and sponsored by APB.

## 8

Friday

- Last entry date for men's softball league and the men's Sunday flag football. Play begins the following weekend. Sign up at the health center.

## 9

Saturday

- Relive classic Disney animation when APB presents "Alice in Wonderland" at 11 a.m. and 2 p.m. in the UC Theater. Admission is \$1.00 for students and .50 for children.

## 10

Sunday

- The Bengals start their regular season defense of their AFC crown in a clash with the Chicago Bears. Workshop preparation for Law School Admission Test will be offered from 8:30 a.m. - 4:30 p.m.

# OF EVENTS



## 11

Monday

- Scribbler's Anonymous, a writing group focusing on self expression, will meet between 7 - 9 p.m. in UC 118. The group will meet for eight weeks and is being led by Lethal Stoll.

## 12

Tuesday

- Summerfest celebration, featuring the 4 Guys Standing Around Singing, will begin at noon on the UC Plaza. Another free event from APB.

## 13

Wednesday

- The music and comedy of Dave Rudolph begins at noon in the UC Theater. The event is sponsored by APB, and lunch will be available for \$1.00. "In Her Own Voice: A Reading With Commentary" is the topic of novelist Sherley Anne Williams in the UC Theater at 7:30 p.m.

## 14

Thursday

- Northern on the Night Side Coffee offers free donuts, coffee and a chance to mingle. It will be held in BEP and LA at 7 p.m. Sponsored by APB.

## Get with the band Sept. 7th

JEFF BOHR  
FEATURES EDITOR

The New York City Swing Band will play their original music along with hits of the last four decades this Thursday, September 7, on the UC plaza at 8:00 p.m. The concert is sponsored by the Activities Program Board and is free to the Northern community and general public.

Popular with colleges and universities all over the country, the New York City Swing played at the National Association of Campus Activities Convention in 1986, and the New York City Swing has won the NACA's Campus Entertainment Awards for contemporary music in 1987 and '88. In 1989, they were nominated for two more CEAs. The New York City Swing also recently showcased the 75th anniversary convention for The Association of College Unions International in Columbus, Ohio.

Formed six years ago, the group has gone from a 17 piece orchestra to the current eight member swing band. New York City Swing is composed of Dore DeQuattro, trumpet; Tom Russo, trumpet; Jeff (T-Bone) Gerard, lead vocals and trombone; Mark Finberg, saxophone and keyboards; Mark Swiggert, saxophone; Robert Valli, bass; Steve Shane, drums; and Lance Doss, guitar. Their talents include performances of swing music, music of the 50's and 60's, Jazz, R & B, Motown and contemporary dance music.

For an evening of good times and great music, join the New York City Swing on the plaza this Thursday, September 6, at 8:00 p.m. from Benny Goodman to the Blues Brothers, from Peter Dinklage to Bob Seger, the New York City Swing will be sure to play music that all will enjoy.

# • Sports •

September 6, 1989

## Northern "stars" '89-90

**DON OWEN**  
SPORTS EDITOR

Fans of Northern Kentucky University witnessed many outstanding athletic performances from teams and individuals last year. During the basketball season, Derek Fields became NKU's all-time single season scoring leader as the men posted a 17-11 record in Ken Shields' first year as head coach.

And of course, the Lady Norse basketball juggernaut rolled on to yet another 20 win season and NCAA tournament berth, where the overtime jinx ended their season—again.

NKU baseball coach Bill Aker won his 500th career game as the Norsemen advanced to the NCAA playoffs and narrowly missed the Division II World Series, while the women's softball team captured a share of the Great Lakes Valley Conference championship.

The question now is: Who will stand out this year? Here are a few Northern stars who might take the spotlight in 1989-90:

--The Lady Norse basketball team. Who could blame coach Nancy Winstel if she dreads the word "overtime"? The bad luck her Lady Norse have experienced the past three years during NCAA tournaments play is incredible. Three losses—all overtime affairs NKU was on the verge of winning--tend to overshadow what has been a phenomenal period of basketball played by the Lady Norse.

Although this year's team will miss Natalie Ochs and Cindy Schlarman, the return of three starters and a deep, talented bench should produce another outstanding campaign. If the backcourt develops and sophomore Amy Middleton emerges as a top-flight center, the Lady Norse could dominate the GLVC. And maybe this year, they can avoid overtime games in the NCAA tournament.

--Linda Honigford, one of three returning starters and the only senior on this year's Lady Norse basketball team. If she can avoid injuries this season, Honigford has all the ability to capture the GLVC Player of the Year honor and also become NKU's second female All-American basketball player (Julie Wells was the first). The Cloverdale, Ohio, native was selected first-team All-Conference as a sophomore, but was hampered last year by both a broken arm and sprained ankle. Despite the injuries, Honigford scored her 1,000th career point last Feb. 21 against Xavier. Don't be surprised if this 6-0 forward, who owns a

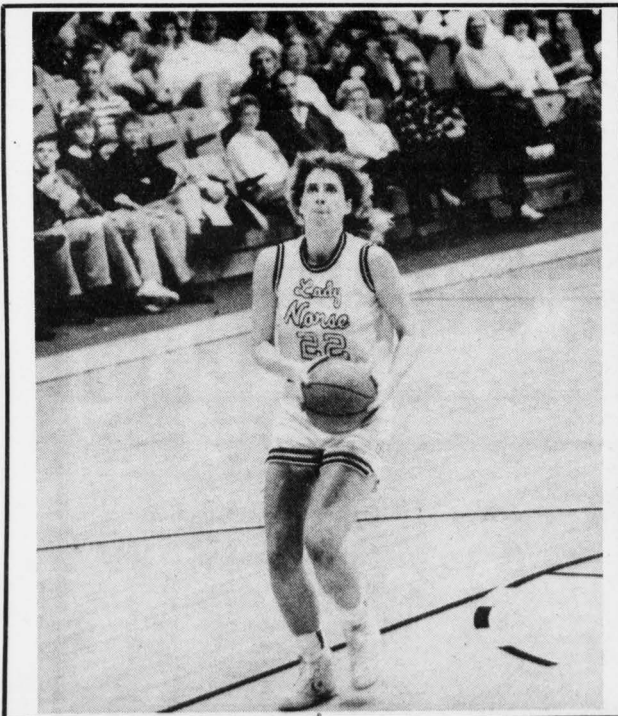
plethora of inside moves and a picture-perfect jump shot, breaks several school records by season's end.

--George Smith, a key reserve for Ken Shields' Norsemen last year. With the loss of all five starters, Smith should find himself as NKU's primary inside player in 1989-90. The 6-6 senior strongman from Greenhills High School combines a bullish inside game with a soft shooting touch that could make him one of the GLVC's sleepers in the upcoming year. Due to an overabundance of returning talent within the conference, Smith might be overshadowed, but for the Norsemen to have any success, Big George must get double figures in points and rebounds every night.

--Herbie Kunz, captain for Paul Rockwood's soccer team. An All-GLVC performer in 1988, the senior fullback from Freehold, New Jersey, would like

nothing better than to prove last year's 4-17-1 record was an aberration. Considered as one of the top defenders in the conference, Kunz is one of the reasons Rockwood is optimistic about 1989. And after experiencing a conference championship in 1987 only to be followed by last year's nightmare, Kunz and his teammates will be eager to make amends in 1989.

--The NKU baseball team, which was one game away from the 1988 Division II College World Series. Bill Aker's Norsemen were so close the P.A. announcer had to ask fans to stay off the field following the game. But as fate would have it, Armstrong State rallied and ended a great season for NKU. With many of his players returning, Aker can look forward to another fine season and add to his impressive number of victories, which passed the 500 mark in 1988.



Above: Linda Honigford....driving toward Great Lakes Valley Conference and All-America honors in 1989-90. Photo by Scott Rigney

## Does NKU really need new arena?

**DON OWEN**  
SPORTS EDITOR

Now I've heard everything.

The Northern Kentucky University Board of Regents has requested \$20 million for a new 10,000 seat convocation center that will be used for, among other things, basketball. Correct me if I'm wrong, but doesn't Northern have trouble filling up 2,500 seat Regatta Hall? Are the throngs going to rush to see NKU play simply because of a new arena?

It never ceases to amaze me how the NKU administration does so many things backwards. In its present athletic setup in Division II, NKU needs a 10,000 seat arena like Roseanne Barr needs another Hostess Twinkie--there's already too much excess space. If you can't draw 2,500 people to your games, why spend \$20 million of the taxpayers' money for a new 10,000 seat arena?

The Board of Regents are, well, "Bored" of Regents (Hall). They argue the new facility would also accommodate commencement exercises, concerts, and lectures.

Commencement exercises? OK, but this only occurs a couple of times per year, so that much money can't be justified for this.

Concerts? I'm certain the likes of Bruce Springsteen, Def Leopard and AC/DC will come running at the prospect of performing at the new arena.

Lectures? Be serious! When was the last time a lecture at NKU filled up one of the current auditoriums? Or for that matter, when was one half-filled?

So why don't I quit with the administration-bashing and get to the point, right? Regardless of what the "Bored" of Regents say, basketball would be the primary tenant for a new facility, and at the present time, NKU doesn't have the attendance figures to justify a new arena.

And why does the attendance suffer at NKU? Very simple. Division II basketball is fine, but in the ultra-competitive Greater Cincinnati area, it takes more to draw the crowds in. Let's face it, Northern versus Judson College, whose starting five would have trouble winning a pick-up game in the Albright Center, isn't likely to incite pep rallies outside the University Center. However, if NKU

See ARENA page 11

# Marshall thunders past Norsemen

DON OWEN  
SPORTS EDITOR

The Marshall University Thundering Herd spoiled the 1989 debut of the NKU soccer team by posting a 2-0 victory on Thursday (Aug. 31) over the Norsemen.

Coach Paul Rockwood's team, coming off a 4-17-1 record in 1988, were not able to dent the scoreboard against the Division I Thundering Herd. The Norsemen had several opportunities, but Marshall's suffocating defense rose to every challenge and sent NKU down to a

season-opening loss.

The Norsemen will return to action Sept. 9 and 10 in the NKU soccer invitational.

## Divison I has grown too big

DON OWENS  
SPORTS EDITOR

Thomas C. Hansen, commissioner of the Pacific-10 Conference, has proposed opening up the Division I men's basketball tournament to Division II schools.

No, what you just read is *not* a misprint. If Hansen gets his wish, the winner of the Great Lakes Valley Conference, of which NKU is a member, could soon find themselves in the big show with the Big Ten, Big East and the ACC.

According to *NCAA NEWS*, the reason behind such a radical proposal is that Hansen feels the Division I membership has grown too large (currently 291 schools). His plan is to ease many schools now in Division I back into Division II by taking away those schools' Division I voting power at the NCAA convention. Great idea, except for one little thing: What happens if a Division II school wins the national championship?

The chances of a Division II school advancing through the tournament are slim at best. Aren't they? Just last season, Division II UC-Riverside bombed Big Ten powerhouse Iowa, 110-92, on a neutral floor. But Iowa wasn't a national championship team, either.

However, remember last year's Division I national champion? The University of Michigan Wolverines, with Glen Rice, Rumeal Robinson and Sean Higgins? Last December in Salt Lake City, Utah, the eventual national champs were shocked, 70-66, by the University of Alaska-Anchorage, another Division II school. And remember, it was on a neutral court.

Can Division II schools, especially the powerful ones, compete with the big boys? There's only one way to find out, and if Hansen gets his wish, we soon might know.

## ARENA

from page 10

were to take the plunge into Division I, games against UC, Xavier and other such schools would more than justify a new arena. And to open the new arena, how about the University of Louisville or the University of Kentucky taking on NKU?

It's not as far-fetched as it sounds. U of L has for years played all in-state schools. It would be great public relations for either university to give a smaller school a hand, but it will never happen unless Northern goes Division I.

For those of you who have dreamed of

a 19,000 seat arena that would be the home for both NKU and a proposed NBA franchise, forget it. Governor Wallace Wilkinson wants a guarantee from an NBA team before he will OK a 19,000 seat arena, and an NBA team would want the arena built first.

So, will the "Bored" of Regents, those courageous defenders of higher education, dream up other fantastic schemes for NKU? I have a suggestion that makes as much sense as the

proposed arena: Why not build a new 100,000 seat football stadium? It will only cost \$200 million or so, and who cares if NKU doesn't have a football program? It can always be used for such mammoth events as two-on-two frisbee tournaments and coed Lasertron competitions. Or how about a giant game of hide 'n seek? With all the empty seats, there will be plenty of hiding places.

And a new 10,000 seat arena will provide plenty of hiding places, too.

## Cheerleaders win superior ribbons

### NORTHERN STAFF REPORT

-The NKU Varsity cheerleaders earned national honors at the Universal Cheerleaders Association Cheerleading Camp, held during the month of August, in Murfreesboro, Tenn.

The group received blue and gold superior ribbons during evaluations, a second place trophy in sideline competition, and a fourth place trophy during the cheering competition. Sixteen Division II schools were represented in the four-day event.

Members of the squad include: captain Bridget Bauman, captain Vince Kelly, Christy Brickler, Brian Williams, Brian Krumpleman, Paige Slawter, Dawn Gibson, Michelle Hickey, Sonya Newman, Rachel Wright, Julie Gantly, and Ginette Bolin.

### - HOOP TRIVIA TIME -

1. During the 1983-84 basketball season the NKU Norsemen defeated two Division I schools, the last time they accomplished such a feat. The two schools they defeated were:

- A. North Carolina and Vanderbilt
- B. Xavier and Dayton
- C. Evansville and Tennessee State
- D. Cincinnati and Cleveland State

2. Brady Jackson is NKU's all-time career scoring leader for the men. The all-time women's scoring leader for NKU is:

- A. Cindy Schlarman
- B. Pam King
- C. Venus Lacy
- D. Peggy Vincent

### ANSWERS:

- 1. NKU defeated Tenn. State at home and pulled off a shocking road upset of the MCC's Evansville during 1983-84
- 2. Peggy Vincent - 1,883 career points.

### Below:

Front row (from left to right): Michelle Hickey, Christy Brickler, Ginette Bolin. 2nd row: Paige Slawter, Rachel Wright, Bridget Bauman, Julie Gantly, Dawn Gibson. 3rd row: Vince Kelly, Brian Williams, Brian Krumpleman. (Not pictured, Sonya Newman.)



# AIM HIGH

## GET THE EDGE ON THE COMPETITION

You're working hard for your college degree. But at graduation, you may be one of many people competing for the few really good openings. Get the most from your degree. Air Force ROTC is one way to help you get started. Our training program gives you the management and leadership skills you need to succeed. As an Air Force officer, you'll put your education to work in a responsible position from the very beginning.

It's a great opportunity. Why settle for anything less?

CAPT CONNIE PILLICH  
513-556-2237  
COLLECT

**AIR FORCE**  
**ROTC**

Leadership Excellence Starts Here



## Women's Soccer Tournament

Play begins: September 20

Last entry date: September 14

For sign up or information, call Campus Recreation  
572-5197 or stop by RHC 129.

## Men's Flag Football-Saturday League

Play begins: September 23

Last entry date: September 15

For sign up or information, call Campus Recreation  
572-5197 or stop by RHC 129.

## Men's Soccer League

Play begins: September 25

Last entry date: September 18

For sign up or information, call Campus Recreation  
572-5197 or stop by RHC 129.

# BARLEYCORN'S YACHT CLUB

*Hiring full/part time kitchen personnel,  
servers, host/hostesses, bussers and janitors.*

*Good benefits and excellent advancement  
opportunities. Apply in person Mon.-Thurs.  
2:30-4:00 at 201 Riverboat Row, Newport, KY.*

S e p t e m b e r 4 - 8

# STUDENT APPRECIATION WEEK

MONDAY, SEPTEMBER 4  
TUESDAY, SEPTEMBER 5

WEDNESDAY, SEPTEMBER 6

THURSDAY, SEPTEMBER 7

FRIDAY, SEPTEMBER 8

SATURDAY, SEPTEMBER 9

### LABOR DAY - NO CLASSES

ICE CREAM SOCIAL- Free sundaes on the plaza from 11 am - 1 pm.  
Guest dippers from around campus. **Students only please.**

DEPARTMENT DAYS - Various departments will be available to give  
out information about their areas.  
From 11 am - 1pm on the plaza.

INTERNATIONAL STUDENTS COFFEE HOUR - University Center  
second floor lobby, Noon - 1pm

ACU-I POOL TOURNAMENT FINALS - University Center Gameroom  
5pm - 9pm.

PUTT-PUTT ON THE PLAZA - Test your skill at lunchtime! Sponsored  
by Campus Recreation.

**NEW YORK CITY SWING BAND CONCERT** - Don't miss the world famous  
NYC Swing Band at 8pm on the UC plaza.  
They'll perform your favorite Rock,  
Motown, and R&B sounds. **FREE.**

BRING A GUEST TO THE HEALTH CENTER - Limit, one free guest  
per student I.D.

BRING A GUEST TO THE HEALTH CENTER - Limit, one free guest  
per student I.D.

BRING A GUEST TO THE HEALTH CENTER - Limit, one free guest  
per student I.D.

The Public Relations Student Society of America, (PRSSA) will meet Thursday at 12:15 p.m. in LA 104. Anyone interested in attending is welcome.

**WANTED**

Telephone Researchers pulling on fine computer work stations  
No experience needed  
No sales  
\$6-\$7 an hour  
Evenings and Weekends  
Flexible hours  
Call Camala or Ellen, Mon.-Fri.  
9:00a.m. to 5:00p.m.  
784-9100

**PREGNANT? WORRIED?**

We CARE about YOU  
Confidential  
Emotional Support  
Practical Help  
CALL NOW



In Kentucky Call Toll-Free  
1-800-822-5824  
24 Hours a Day

OPPORTUNITIES FOR LIFE, INC.  
Help is just a phone call away.



**Your Campus  
Rock 'n' Roll Station**  
Be sure to tune us in at the  
dorms on 810 A.M.

# FLORENCE JEWELERS

Welcomes NKU Students

## FREE

1/4 ct wt Diamond Earrings  
Giveaway



**COLD SPRING**  
781-7000  
County Square  
Shopping Center  
U.S. 27  
(6 mi. North  
of Alexandria)

Register  
At  
Either  
Location



**FLORENCE**  
283-0997  
Thriftway Plaza  
7273  
Turftway Rd.

All Work Done On Premises

- Jewelry Manufacturing
- Jewelry Repair & Sizing
- Remounts
- Custom Design
- Appraisals

## SHOP & SAVE

Compare Our Prices With Anyone's

Watch for special discounts for NKU students

Alan Nagel

Dan Lloyd

Vince Turner

**FREE  
Ring  
Cleaning**

Good for 2 Rings Only  
Each Additional \$2.00

**Ring Sizing**  
We Will Size Your  
Ring One Size For

\$9.50 Gents  
\$7.50 Ladies

Each Additional Size Extra

**Gold Chains  
Soldered**

PLUS We Will Clean  
And Polish It FREE  
\$4.50 Per Break  
Regularly \$6.50

## DOING TAXES CAN MAKE YOU FEEL GREAT. ESPECIALLY WHEN THEY'RE SOMEONE ELSE'S.

If you have a basic aptitude for math and the desire to help others, you can get a lot of satisfaction by volunteering your time and skills to people who need help doing their taxes.

You'll be amazed by the return you'll get from helping people with what taxes them.

80,000 people already have.

Join them.

To find out about the free IRS training program that will teach you the ins and outs of preparing taxes, call 1-800-424-1040 now.

A Public Service of  
This Publication &



Internal  
Revenue  
Service



Volunteer now. And you'll make  
someone's taxes less taxing later.



# Mother Goose & GRIMM

by Mike Peters



## SEARCH - A - WORD

Theme: Sports

- |            |          |
|------------|----------|
| Softball   | Tennis   |
| Basketball | Swimming |
| Football   | Track    |
| Soccer     | Olympics |
| Home run   | Fans     |
| Fumble     | Team     |
| Goal       | Ace      |
| Victory    | Love     |
| Foul       | Sprint   |
| Catch      | Medal    |

G P E V J S W I M M I N G  
U P P T E O L Y M P I C S  
L A D E M F O B C J S L S  
B A S K E T B A L L L J I  
F R D J E B K J L A P T R  
F J K E L A T H B T H R E  
R S T H B L T T E N N I S  
G O N A M L O V E T U S R  
G O S A U O T I T N E I U I  
O R T H F S O C C E R T H  
A C E J I L K T R A C K P  
L E A E M F L O R I A B C  
R U M G H S P R I N T C H  
B R O Y M P Y C R R C L P  
R D D F N U R E M O H L C

Lockers are available for students to rent in the Albright Health Center. There is a fee of \$6.00 and a deposit fee of \$5.00. Locker rentals include a towel service for the semester.



The Northerner

# Classifieds

September 6, 1989

**WANTED**

Telephone Researchers  
No experience needed  
No sales  
\$6.00-\$7.00/hr  
Evenings and Weekends  
Flexible hours  
Call Camala or Ellen  
Mon.-Fri., 9:00 a.m.-5:00 p.m.  
784-9100

**CONGRATULATIONS** new ΔZ pledges! Cheryl, Lisa, Michelle, Liz, Kim, Shannon, Maurey, Traci, Maureen, Billie and Laura. We are so happy to have you as our new sisters!

Love,  
Delta Zeta

**1966 Ford Mustang Convertible.** 6 cyl., three speed stick. New carpet, top and paint. 95% restored. Serious calls only. Sell as is--\$6500. 781-1374.

**FOR RENT**

Furnished room. Alexandria, close to U.S. 27. \$40 per week includes utilities. Females only. 635-0273.

**Congratulations** to new ATΩ pledges Mike Brisley, Chris Eichorn, Lee Lesure, Scott Spence and Greg Ziegler! The brothers of Theta Omega wish you the best of luck in studies and social life this semester!

**JOB.** Weekend and evenings. \$5.00/hr working remaining baseball games and football games. Call 621-2459.

**BILLIE LANE**

Congratulations! I'm looking forward to all the fun and wild things we'll do this semester!

Dee Zee Love and Mine  
Your Ribbon Buddy

**POSITION AVAILABLE:**

Morning bus route assistant for handicapped student. 7:00-9:00 a.m. Contact Erlanger-Elsmere Board of Education. 727-2009.

**TRACI HOUSE,**

Glad to have you in Delta Zeta. Look for more turtles to come.

Love,  
Your Ribbon Buddy

**NATIONAL MARKETING FIRM** seeks mature student to manage on-campus promotions for top companies this school year. Flexible hours with earnings potential to \$2,500 per semester. Must be organized, hardworking, and motivated. Call Myra or Kevin at 1-800-592-2121.

**Looking for a fraternity, sorority or student organization** that would like to make \$500-\$1000 for a one week on-campus marketing project. Must be organized and hardworking. Call Kevin or Myra at 1-800-592-2121.

**CHILD CARE ATTENDENT** needed for church nursery on Sunday mornings. 441-8939

**PROFESSIONAL TYPING!**

Reasonable.  
961-1921

**BABY BOA CONSTRUCTOR** for sale. Call Doug at 727-8208.

**COLLEGE STUDENT NEEDED** to pick child from villa (at 3:00 p.m.) and watch until 5:30 p.m. Monday through Friday. Excellent compensation. Please call Carole at 241-5200 or 331-8369.

**PAPERS, RESUMES TYPED**

Advice on grammar & style  
Warren Word Processing  
84 Geiger Avenue, Bellevue  
Fast and Reasonable  
Call Jo Anne Warren  
491-5414 eves

**COLLEGE REP WANTED** to distribute "Student Rate" subscription cards at this campus. Good income. For information and application write to: COLLEGIATE MARKETING SERVICES, 303 W. Center Avenue, Mooresville, NC 28115 704-663-0963

**MANSION HILL TAVERN** needs barmaids/bartenders. Flexible hours. Call Lou at 431-9542 between 11:00 a.m. and 3:00 p.m.

**Hey, Dave,** We thoroughly enjoyed your drawing! But what's the %\*#@& point?



## 1987 & 1988 Campus Entertainment

### Award Winners

# New York City Swing Band

Playing the Best of Top Forty, Swing, Oldies, R&B, Motown, And More!



Thursday, September 7th, 8:00 PM  
University Center Plaza

Sponsored by APB

**EDITORIAL** from page 5

obviously wants to get more, in terms of quality, than it is willing to pay for. But that policy is a risky one. The University should be reasonable about its limitations and sensitive to its dangers.

The unexpected increase in student enrollment this year is even greater than last year's. Presumably, this increase will lead to another rather sizable budget surplus. Let's hope, both for the benefit of the entire University community, that the 1990's treat the part-time faculty better than the 1980's did.

**PARKING** from page 2

They have extended Lots A and B, and have graveled an area near the dorms. Also they are laying gravel in an area behind Albright Center, which had been postponed due to bad weather.

With that, Public Safety feels that once students have adjusted to their routines, traffic should be much smoother by the middle of September.

**Fitness At It's Best**

We are your local professional fitness center. Our experienced staff will help you feel good and look good. Faster than you ever thought possible. Unlike a home fitness program, we feature a wide variety of services and equipment. Start Today!

**Featuring:**  
 • Free weights  
 • Stairmaster  
 • Life cycles  
 • Life rower

Special offer: 3 months \$59.00  
 New members only  
 Expires 12/13/89  
**dixie nautilus**  
 Highland Heights 441-2292  
 Ft. Wright 491-6002

**Do You Want VISA & MasterCard Credit Cards?**

Now You can have two of the most recognized accepted credit cards in the world - VISA® and MasterCard® credit cards. "In your name" EVEN IF YOU ARE NEW IN CREDIT or HAVE BEEN TURNED DOWN BEFORE!

VISA® and MasterCard® the credit cards you deserve and need for a 10 \* BOOKS \* DEPARTMENT STORES \* TRAVEL \* ENTERTAINMENT \* EMERGENCY CASH \* TICKETS \* RESTAURANTS \* HOTELS \* GAS \* CAR RENTALS \* REPAIRS \* AND TO BUILD YOUR CREDIT RATING.

**10th Year!**

**GUARANTEED! GOLD CARD**  
 VISA/MasterCard GUARANTEED ISSUE OR MONEY BACK

Approval absolutely guaranteed so hurry. Fill out this card today. Your credit cards are waiting.

A. GARSEAU, Student Services  
 P.O. BOX 130336 SUNRISE FL 33313

**YES!** I want VISA/MasterCard credit cards. Enclosed find \$15.00 which is 100% refundable if not approved immediately.

NAME \_\_\_\_\_

ADDRESS \_\_\_\_\_

CITY \_\_\_\_\_ STATE \_\_\_\_\_ ZIP \_\_\_\_\_

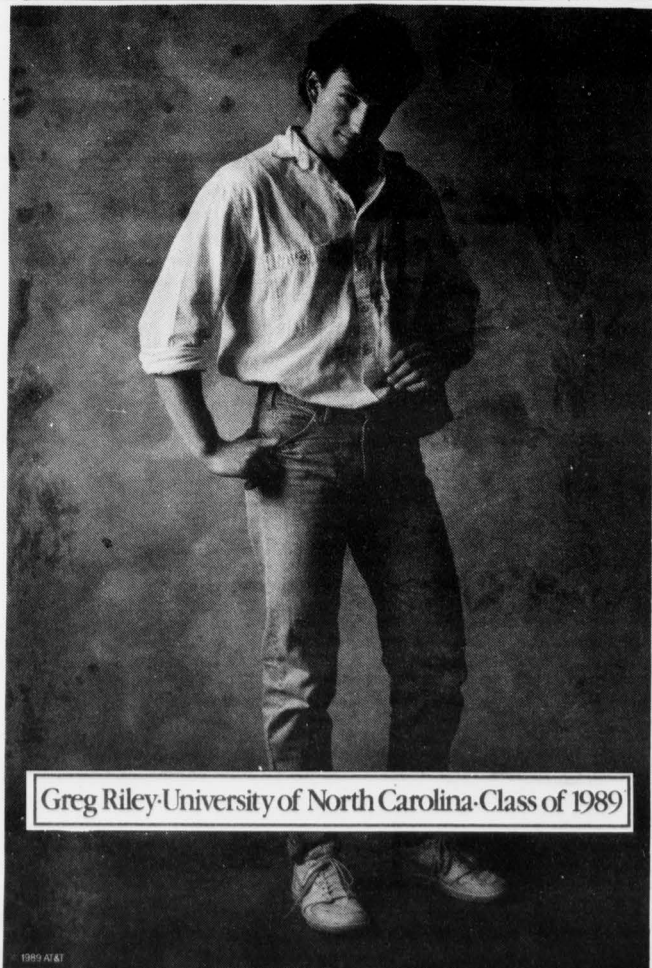
PHONE # \_\_\_\_\_

SOC SECURITY # \_\_\_\_\_

SIGNATURE \_\_\_\_\_

**CARD THIS NO RISK COUPON TODAY!**

★ ★ ★ ★ ★ The Albright Health Center will resume regular fall hours Tuesday, September 5th. They are as follows: Sunday 1p.m. - 9p.m. Monday - Thursday 7 a.m. - 11 p.m. Friday 7 a.m. - 9 p.m. Saturday 10 a.m. - 6 p.m. ★ ★ ★ ★ ★



Greg Riley - University of North Carolina - Class of 1989

Some long distance companies promise you the moon, but what you really want is dependable, high-quality service. That's just what you'll get when you choose AT&T Long Distance Service, at a cost that's a lot less than you think. You can expect low long distance rates, 24-hour operator assistance, clear connections and immediate credit for wrong numbers. And the assurance that virtually all of your calls will go through the first time. That's the genius of the AT&T Worldwide Intelligent Network.

When it's time to choose, forget the gimmicks and make the intelligent choice—AT&T.

If you'd like to know more about our products or services, like International Calling and the AT&T Card, call us at 1 800 222-0300.

**“I don't want a lot of hype. I just want something I can count on.”**



**AT&T**

The right choice.