

# THE NORTHERNER

Volume 28 Number 1

Independent Student Publication of Northern Kentucky University

Wednesday, August 26, 1998

## D.W. Griffith Sculpture Removed from NKU's campus



Suzanne Fleming/The Northerner

ON THE MOVE: Physical Plant Workers disassemble the "Way Down East" Sculpture to be refurbished. The new location of the sculpture has not yet been decided.

By Forrest Berkshire  
News Editor  
Justin Lynch  
Editorial Cartoonist

Students returning to Northern Kentucky University this semester will find a conspicuous absence in front of the University Center.

On August 22 physical plant workers disassembled the Red Grooms sculpture "Way Down East" that has stood for fifteen years and transported it to a warehouse on campus where it will be refurbished before it is moved to an undetermined spot.

"It is going into storage to be cleaned to brighten it back up," Dave Knight, Gallery Director said. "It was originally painted with a type of automobile paint, so we're going to try a variety of wax treatments and cleaners because it has faded significantly in the past fifteen years," he said.

Art Professor Barry Anderson, who is in charge of the restoration process, said he is not sure when the sculpture will be finished. "The question is whether or not the paint has faded beneath the veneer," he said.

"Physical Plant will be doing the restoration process unless we feel a professional crew is necessary; everything is very tentative right now."

The decision to move the sculpture was made by President James Votruba, who said it was "not a simple decision to make."

Anderson, who is also Faculty Regent, said "The president enjoys wide support from the regents and the board felt comfortable with his decision."

The move comes after considerable debate during the 1998 spring semester, when several task forces of both faculty and students were created to address the racist overtones in the work of D.W. Griffith, who is most famous for "Birth of a Nation", in which the Ku Klux Klan is portrayed as heroes.

"Some have argued that it should be removed from the campus because Griffith's work deeply offends some members of our campus community who find it hurtful and alienating," Votruba said in a memorandum released to the staff. "Others have argued that the sculpture should remain where it is because to move it would be to compromise the intellectual and creative freedom that defines a university in its most fundamental sense," he said.

In making the decision, Votruba said he has "listened carefully to these and other points of view."

Votruba said that he decided it was important for the sculpture to stay for its instructional as well as aesthetic contributions to the campus.

Because of concerns expressed by a significant number of our faculty, staff and students it is important to relocate the sculpture to a See SCULPTURE, Page 2

## Sexual assault

By Wayne Yeager  
Staff Writer

Northern Kentucky University is not immune to violent crime.

On Wednesday, Aug. 12, at 3:30 a.m., a 19-year-old female was sexually assaulted in the bedroom of her Woodcrest apartment.

According to the police report, the assailant entered the apartment through the unlocked front door and proceeded to the bedroom, said the investigating officer, Sgt. Charlene Schweitzer.

Physical contact was made and the victim screamed, causing the assailant to leave the apartment.

"It was not a rape," Schweitzer said. "It was a sexual assault."

According to the police report, DPS was phoned and arrived on the scene within five minutes of the incident.

The Campus Crime Awareness Bulletin 98-1 described suspect as a male with medium build wearing dark clothes.

"We are working on some information that has been coming into us," Schweitzer said. "If anyone has any information or they think they might know something, we would be more than happy to hear from them. They can stay anonymous."

The Aug. 12 sexual assault was the second such incident on NKU's campus in the last three months.

On May 12, at six in the morning, another female was assaulted in the bedroom of her apartment. In that incident, the intruder covered the victim's mouth and told her to "shut up." The victim then bit and kicked her assailant, causing him to leave the apartment.

The Campus Crime Awareness Bulletin 98-1 described suspect as a male with a small or medium build and a possible deep voice. Sgt. Schweitzer would not comment on whether the two incidents are related.

She does feel that NKU is still a safe campus and encourages students to know their surroundings, walk in pairs after dark, use the escort service if necessary and lock their doors.

## Dorms capacity almost to limit

This year's occupancy rate up to 98 percent

By Jay Berry  
Copy Editor

The number of students living on campus is on the rise.

Enrollment at the residential dorms and apartments on campus is up five percent from this time last year, according to Patty Hayden, Director of Residential Life.

As of Aug. 14, there were 884 residential agreements, compared with 838 agreements as of Aug. 15, 1997. The occupancy rate for this year is 98 percent.

There are 399 returning residents and 485 new residents. Fifty-five percent of these residents are new to the dorms. This increase and change in campus residents will cause changes, some of which may not be immediately noticed.

Additional resident assistants have been hired for the dorms and Robert Evans, food service director, said that the cafeteria will hire a few more employees.

According to Leo Calderon, Associate Director of Public Safety, there will be increased campus patrols and planning for traffic patterns at various times during the day.

Calderon added that DPS will be sponsoring a variety of events for residential students this fall, including Safety and Security Week Sept. 8-12 in Norse Commons and a Town Meeting on Sept. 24 at 7:30 in NC 116.

They will be interacting with the residential life staff and students to increase awareness of safety and security issues on campus.

DPS also hopes to encourage communication between RA's, residents and police, especially with the recent incidents involving two women who were reportedly attacked in their dorms.

DPS Sgt. Charlene Schweitzer said they plan to have a stepped-up presence patrolling the dorms and educating residents on how to stay safe.

Schweitzer added as a reminder that parking lots B, C and J are faculty staff lots and that lot J is one way off of Nunn Drive by the visitors booth. Residential Village stu-

dents must also have a residential parking permit. "Parking violators will be cited," she said.

Schweitzer advised that all students become familiar with the traffic and parking pamphlet to obtain information on the new fines and other important information. Anyone wishing to obtain more information on DPS can call them at 572-5500 or visit their new web site at [www.access.nku.edu/dps/](http://www.access.nku.edu/dps/).

One reason cited by Hayden for the increase in student residents is a solid retention rate.

"More students are coming back to the dorms year after year," she said.

She added that if the need for dorm space increases, there will be a reduction in the number of private rooms as needed until the situation is corrected.

Regarding the question of whether or not they plan to build new dorms in the future if needed, Hayden said, "Nothing has been said for sure, especially with other university priorities such as the new science building."

Students returning to Northern Kentucky University this semester will find a conspicuous absence in front of the University Center.

On August 22 physical plant workers disassembled the Red Grooms sculpture "Way Down East" that has stood for fifteen years and transported it to a warehouse on campus where it will be refurbished before it is moved to an undetermined spot.

"It is going into storage to be cleaned to brighten it back up," Dave Knight, Gallery Director said. "It was originally painted with a type of automobile paint, so we're going to try a variety of wax treatments and cleaners because it has faded significantly in the past fifteen years," he said.

Art Professor Barry Anderson, who is in charge of the restoration process, said he is not sure when the sculpture will be finished.

"The question is whether or not the paint has faded beneath the veneer," he said.

"Physical Plant will be doing the restoration process unless we feel a professional crew is necessary; everything is very tentative right now."

The decision to move the sculpture was made by President James Votruba, who said it was "not a simple decision to make."



Suzanne Fleming/The Northerner

Michael Robinson and Johnny Jackson move into the dorms Saturday.

## Professor of the Year, Doctor Joan Ferrante

By Kelly Carson  
Co-Features Editor

Nineteen ninety-eight is a special year for Dr. Joan Ferrante. This year is not only her tenth anniversary at Northern Kentucky University, but she has also been named the Frank Sinton Milburn Outstanding Professor for 1998.

Ferrante is an associate professor in the department of sociology, anthropology, and philosophy. She has taught a variety of courses since she began teaching full-time at NKU in 1988. Over the years, her hard work and dedication have earned her several awards including

the Outstanding Junior Faculty Award, a Professional Achievement Award, and a Favorite Faculty Award.

Ferrante explains her teaching style as distinctive. She interacts with her students as much as possible, but in large lecture classes such as Introduction to Sociology, it is difficult for her to get feedback from every student. Because of this, she requires her students to write short response papers at the end of each class period. "I want to hear what my students are thinking," Ferrante said. "I get a lot of insight from my students. They help me think of new, more contemporary applications."

Ferrante said she uses students' responses in her textbooks. She explained that readers can relate better to examples from their peers. She also commented, "My students in my current classes take their response papers more seriously because they know they are next."

In addition to having written textbooks used at colleges throughout the country, Ferrante has collaboratively published several books with students. Some of these books include *Let's Go Sociology: Travels On the Internet*, which she co-wrote with NKU student Angela Vaughn, and *Social Issues On the Internet*, co-written with former NKU students Lindsay Hixson and Kristie Vice.

Ferrante always makes herself available to students. "On my office door, I post my home number, fax number, and e-mail address so students can reach me anytime," she said that she is always willing to advise a student who is looking for direction in his/her educational career.

As coordinator for the Applied Cultural Studies Program, Ferrante helps 18-30 students each semester with choosing practicum projects. She also assists students in preparing resumes. One example of a student resume can be seen on her web page at <http://www.nku.edu/~scd/>.

Ferrante explained, "This program integrates the disciplines of sociology and anthropology and strives to prepare its majors for a

career and a life in an information and global society by giving them a strong background in research methods and an appreciation for cultural diversity."

Ferrante said her work takes up most of her time, but when she does have spare time, she enjoys sports like tennis and volleyball. She also serves as consultant for the Brighton Center and recently hosted a Bosnian exchange student for a year.

Ferrante earned her doctorate in 1984 and has guest lectured all over the country, but she has never had the desire to leave NKU. She added, "I like Northern. I've adjusted my style to Northern students and I feel that I mesh well with the students here."



Joan Ferrante

### NEWS

Electronic sign gives  
NKU a new look

P2

### FEATURES

Ziggy Marley & the Melody Makers  
to play at Musicfest '98

P4

### SPORTS

Norse volleyball team starts  
new season with high hopes

P6

Wednesday, August 26, 1998

THE NORTHERNER

## New high-tech sign

By Anna Weaver  
Executive Editor

A new sign on the U.S. 27 entrance to Northern Kentucky University will try to guarantee that the school will no longer be out of sight or out of mind.

According to Mary Paula Schuh, director of campus planning, the sign will be completed in October of this year.

"The sign will have an electronic message center and the ability to notify the community of on-campus events," Schuh said.

She added that primary benefits will include notification of athletic and fine art events and key dates for students such as registration dates and commencement. Media relations director Rick Meyers said 40,000 cars pass by the NKU entrance on U.S. 27 every day. Meyers said the sign gives NKU the chance to send forth the school's message to the people that drive by each day.

"When I was working as sports information director, we always thought a sign would do wonders for the athletic department," Meyers said.

Jane Meier, intercollegiate athletics director, agrees that the sign is needed to make the community aware of events on NKU's campus.

"It's about time," Meier said. "We've felt for years that we've needed some-

thing. It's finally going to happen and we're excited."

Meier said the sign would not only be used by athletics but would benefit every department on campus by letting the community and students know when events would take place. The athletics department will use the sign to advertise sporting events, special events and ticket sales.

The sign, located on the northwest corner of the U.S. 27 and Nunn Drive intersection, will include a lighted, scrolling electronic message board that has a computer modem connection. This will allow the message to be changed by a remote at any time.

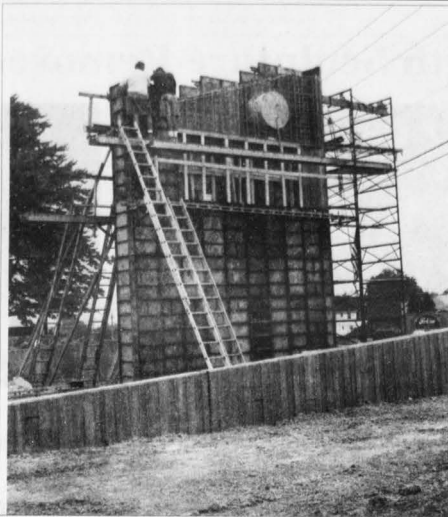
Meier said the new sign will increase visibility for NKU and will be an attractive opening into the campus.

According to Carla Chance, Vice President of Administrative Affairs, the money to pay for the new sign will come from two different sources.

Half of the money comes from the state for widening U.S. 27.

The other half of the money comes from the operational savings budget of the Administrative Affairs unit.

Chance added that as NKU seeks to become a publicly engaged institution, an electronic sign is important to bring the university's message to 40,000 drivers each day.



Suzanne Fleming/The Northerner  
**SIGNING UP:** The new sign on U.S. Route 27 will have an electronic scrolling message board aimed to reach 40,000 drivers each day.

## Sculpture

Continued from page 1

less central location so those offended are not forced to confront it as a daily routine of their campus life, Votruba decided that it is being moved to create a win-win situation to accommodate all the interested groups on campus," Gerald Hunter, Assistant Vice President of Administration, said.

"The debate over the Grooms sculpture has provided a valuable opportunity for all involved to gain new insights and perspectives," Votruba said. "In this sense, the sculpture has served the purpose for which it was intended when it was originally placed on the campus. It has helped us learn."

There is still some debate as to where the sculpture will be relocated.

One site being considered is at the entrance to Corbett Theatre. Votruba said he favors locating it there, where he feels it would "tie in with both the art building and the theatre."

However, no site has yet been determined. There is also nothing yet planned for the empty spot where the sculpture once stood.

Votruba said in an interview that would be addressed later in the year as part of the master plan for the university.

Some ideas that Votruba mentioned were a fountain or some sort of planting to soften the area. He also mentioned possibly accepting submissions to create an artistic piece that captures the spirit of Northern Kentucky University, but he said that nothing is final.



**HAVE A LAUGH:** New Art Department Chair Don Kelm jokes with former student Bob Jansen.

Suzanne Fleming/The Northerner

## Donald Kelm appointed chair of art department

By Margie Wise  
Production Manager

Northern Kentucky University art professor Donald Kelm is starting off the new semester with a new job. Kelm will be taking over for Barbara Houghton as chair of the art department.

"I will forever be grateful to Don for stepping in to lead the department," said Houghton.

"He is not only a creative and brilliant man, but has the ability to organize the department to be able to reach its full potential as one of the best art departments in the region," she said.

Dr. Rodgers Redding, the dean of arts and sciences, recommended Kelm for the post.

Redding said Kelm has attributes which make him good for the position. "Professor Kelm, being a strong leader, will provide some direction with new initiatives," Redding said.

Kelm said he will discuss those initiatives in a six hour faculty meeting on Aug. 28.

Kelm said he will focus on the internal mechanics of running the department as opposed to externally selling it to the surrounding community.

Top priority on his list of ideas, Kelm said, are several new positions he hopes to create in the art department.

These include more staff positions in the office, photography, computer graphics, ceramics and sculpting departments.

He said although the funds for the increase in jobs do not exist at this time, Kelm hopes to work with Redding and other faculty to try to accommodate the changes.

Kelm said these duties must be fulfilled in order for the department to be productive.

"I am trying to tighten the day to day operations to allow the department to run more smoothly," Kelm said.

Kelm said these positions would help maintain faculty and equipment by not overloading either one.

"I am looking for people to do a job that can't be done now as well as it should be because we don't have those positions," he said.

Redding said he and Kelm have had many discussions about possible changes within the department, and Kelm's ideas are just one of several things that make him ready for his role.

Kelm has been a member of the NKU art department since 1977. He has experience as secretary of the faculty senate and also spent time as intern-chair several years ago, all of which Redding said prepares Kelm for his current position.

However, Kelm said it is hard to sum up in a few words exactly what he hopes to accomplish in his term as chair of the art department.

"I can't say what I want to do in the next four years in two sentences. I think that would be folly," he said.

## NKU hits pay dirt

By Kelly Sudzina  
Managing Editor

Over the summer, Northern Kentucky University received an unplanned blessing—of dirt.

Ron Young, superintendent of roads and grounds, said, "We were approached by contractors earlier this summer when they were working on the stadium in Cincinnati."

The contractors needed to get rid of fill as they moved earth to do construction. So they made an offer NKU just could not refuse.

"We've been promised at least 100,000 cubic yards of fill," said Young. "It's coming to us free of charge."

Normally fill costs at least \$12 a cubic yard, Young said. That means the fill NKU has been promised is worth \$1.2 million.

"We've received at least 12,240 cubic yards and that was at the end of June," said Young.

And it is still coming. But there is no schedule for when it does come, Young said. "It's all driven by when they do the excavation in the city."

So what do they plan to do with it?

The fill will be used to level out land to add parking spaces onto lot M. Engineers are already working on site, making preparations for the earth to be moved.

A sewer pipe in the bottom of the valley will be to be extended before the fill can be moved.

There are no estimates available yet on how many spots will be created with the extension of parking lot M. Young said, "A lot of this is preliminary until we know exactly how many yards of fill we will get."



Suzanne Fleming/The Northerner

**SOMETHING FOR NOTHING:** The dirt that was given to NKU is being used to expand Parking Lot M behind the Residential Village.

•A vehicle fire in Lot A was reported to workers in the Albright Health Center.

Officers contained the fire as much as possible until Cold Springs Fire Department arrived.

•Officers responded to an "unwanted subject" who refused to leave the premises of the Baptist Student Union at 12:12 a.m.

The individual was told to leave the premises and to contact the minister.



When asked if he was drinking the driver responded, "Umm...no."

The suspect was arrested and charged with DUI, possession of marijuana, possession of paraphernalia and failure to stop at a stop sign.

•A DPS officer observed a vehicle travelling at a high rate of speed on Johns Hill Road, past the 275 overpass. The vehicle failed to negotiate a stop sign.

On approach to the vehicle, the officer smelled an "alcoholic beverage."

•At University and Nunn Drives, an officer charged a subject with KRS 189.040, driving with one headlight. The occupants were also found to be driving with expired tags and had to have a cab called for them.



## Get 100 FREE minutes.

Then call anywhere in the U.S. for only 10¢ a minute.

Sign up for an AT&T One Rate® plan and your first 100 minutes are FREE.\*  
Whatever your calling needs are AT&T has a One Rate plan that's right for you.



**AT&T One Rate® Plus:** 10¢ a minute—one low rate all the time on state-to-state calls you dial from home. Whoever. Whenever. Wherever you call in the U.S. And just a \$4.95 monthly fee.

**AT&T One Rate® Off Peak:** 10¢ a minute on your state-to-state, direct dialed calls from home from 7pm–7am and all weekend long; 25¢ a minute all other times. And there's no monthly fee.\*

Sign up with AT&T and get 100 minutes FREE.

**Call 1 800 654-0471**

and mention offer code 59917  
or visit [www.att.com/college/np.html](http://www.att.com/college/np.html)

It's all within your reach.\*



\* Terms and conditions apply. Free minutes promotion applies to first full monthly bill. Unused minutes cannot be carried over. Offer expires 12/31/98. Offer based on choice of AT&T One Rate Plus or AT&T One Rate Off Peak Plan. Plans subject to billing availability. In-state rates vary. \$3 monthly minimum usage applies to One Rate Off Peak Plan. Call for details. ©1998 AT&T



# 1998 CAMPUS CRIME SECURITY FACT

Northern Kentucky University (NKU) takes pride in ensuring that the campus is a safe and enjoyable environment. Friends and family members are naturally concerned about the safety and welfare of their loved ones when they are away from home. NKU understands this concern and accepts its responsibility to the students to employ a public safety program which will provide a safe, secure, and enjoyable environment in which to further one's education. However, public safety requires the cooperative efforts of the University, students, faculty, and staff. The purpose of this report is to furnish information pertaining to security for the benefit of the University community.

## CRIME STATISTICS AND CRIME RATES

In accordance with the Federal "Crime Awareness and Campus Security Act of 1990" and the U. S. Department of Education's regulations pursuant to law, NKU provides information relating to crime statistics and security measures to prospective students, matriculated students, and employees. The University's Department of Public Safety forwards uniform crime report information to the Kentucky State Police. Crime statistics for the most recent year periods, which reflect the incidents reported to the state police are enclosed.

## DEPARTMENT OF PUBLIC SAFETY

The NKU Department of Public Safety provides several service oriented functions to the University community. To ensure that each student has a safe place in which to pursue his or her educational goals, the Department of Public Safety employs eighteen sworn police officers and three guards. The department also employs seven full-time clerical and support staff. All sworn University police officers have arrest powers, and receive training through the Department of Criminal Justice Training, Kentucky Justice Cabinet. Officers are responsible for a full range of public safety services, including all criminal offense reports, investigations, medical emergencies, fire emergencies, traffic accidents, enforcement of laws or other regulations regarding underage drinking, the use of controlled substances, weapons, and all other incidents requiring police assistance.

The department also uses four patrol vehicles along with three (3) bicycle patrol units to aid in a 24-hour foot and mobile patrol of the campus. All campus personnel have the full law enforcement authority of a deputy sheriff. Their jurisdiction includes the campus and adjoining streets and roads. Each officer receives a minimum of 40 hours departmental in-service training annually which consists of, but is not limited to, the following: update of legal procedures and changes in laws, crime prevention strategies, firearms instruction and re-qualifications, fire safety, and evacuation response, stress management, suicide prevention, CPR, first-aid and ethnic and cultural sensitivity.

University police prepare and submit criminal offense reports to the Kentucky State Police in Frankfort for compilation of the Uniform Crime Reports. Also, the serial numbers of all vehicles and all other equipment in situations of crime are entered in the data files nationwide through the FBI's National Crime Information Center.

As part of their duties, University police enforce laws regulating underage drinking, the use of controlled substances and weapons. Alcohol beverages are not permitted in the residence halls or other areas of campus without special permission. Intentional use, possession, or sale of firearms or other dangerous weapons by students is strictly forbidden and is a violation of the student code.

Potential criminal actions and other emergencies on campus can be reported directly to the University police by any visitor, student, faculty member or employee by dialing extension 572-7777. Dialing X-7777 from any on-campus phone will provide direct contact with the police dispatcher 24 hours a day. In non-emergency situations, dial 572-5500. Indoor and outdoor yellow emergency telephones are located strategically throughout the campus which are connected directly to the University police. Any person may also report a crime at the Department of Public Safety's headquarters located at 541 Johns Hill Road (adjacent to lot G).

Crime prevention seminars pertaining to Sexual Assault, Operation I.D., Alcohol Awareness, and Anti-drunk Driving Workshops are available from the Department of Public Safety. Information on safety and security topics, which may include films, bulletins, crime alerts, posters, brochures, and information published in the staff and student newspapers are also available.

The Physical Plant Department maintains the University buildings and grounds with a concern for safety and security. It inspects campus facilities regularly, promptly makes repairs, and responds immediately to reports of potential hazards such as broken windows and locks.

The University campus is well lighted and further lighting improvements are being made. The Department of Public Safety assists Physical Plant personnel by reporting potential safety and security hazards. Students, as well as faculty and staff, may also call Physical Plant (572-5294) to report any safety or security hazards.

Escorts are provided by Public Safety from dusk to dawn for the safety of anyone walking alone on campus at night. By calling 572-5500 (on-campus phone) or using any one of the distinctively marked yellow campus emergency phones, an escort can be requested to accompany an individual to any University academic building, parking lot or residence hall.

## ALCOHOLIC BEVERAGES

Northern Kentucky University seeks to encourage and sustain an academic environment that both respects individual freedom and promotes the health, safety, and welfare of all members of its community. In keeping with these objectives and in compliance with the laws of Kentucky, the University has established policies and guidelines governing the possession, sale and consumption of alcoholic beverages on the University campus. Underage possession and/or consumption of alcoholic beverages is a crime and is not permitted on property owned or controlled by the University. Legally permissible consumption and possession of alcoholic beverages is limited to designated locations under certain approved conditions.

## ILLEGAL DRUGS

The University does not condone possession, use or distribution of marijuana, LSD, or other hallucinogens, narcotics, or any other legally controlled substance by anyone on campus. Any individual known to be possessing, using, or distributing such drugs, is subject to disciplinary action and possible arrest, imprisonment and/or fine according to state law.

## DRUG AND ALCOHOL ABUSE PROGRAMS

Consistent with its educational mission, Northern Kentucky University assists its members in finding alternatives to alcoholic beverages for promoting social interaction and stress reduction, and it provides services and resources for community members who experience alcohol-related difficulties.

Keeping "informed" is an important step in developing a healthy lifestyle and in knowing how to cope with problems as they arise. Therefore, NKU provides useful and informative prevention education programs throughout the year. A variety of departments sponsor workshops and lectures on alcohol and drug related issues to support and encourage healthy, productive lifestyles. These programs are made available through:

Drug & Alcohol Prevention Services - 572-6374  
Counseling & Health Services - 572-5650  
Housing and Residential Life Office - 572-5676  
Athletic Department - 572-5631

Assistance is available for students with substance abuse problems or concerns, at Health, Counseling Testing Services. The experienced professional counselors at the counseling services offer support for students in an atmosphere of understanding and confidentiality. Counseling Services offer individual assessment and referral to both on and off campus resources and provides supportive counseling to students recovery.

The Office of Drug and Alcohol Prevention Services (DAPS) is a resource center for faculty, staff and students. The staff is available to assist with and conduct programming for university classes, resident hall activities, and campus wide events. The focus of DAPS is to create a drug free environment by raising awareness of drug and alcohol issues and promoting healthy life choices.

Individuals aware of drug/alcohol problems, whether they are friends, roommates, or family members, are encouraged to act responsibly by consulting with the counseling service. Remaining silent or waiting until a situation has escalated is neither respectful nor responsible. The University supports the idea of a community where students help one another to cooperatively solve alcohol and substance abuse problems as they occur.

## SEXUAL ASSAULT

Northern Kentucky University seeks to encourage respectful relationships among all members of the campus community. In keeping with this goal the Department of Public Safety works with the Women's Center and the Rape Prevention Task Force to educate students about personal safety issues. Because only a small percentage of rapes are perpetrated by strangers, NKU's Rape Prevention Task Force focuses on the development of healthy, open, and honest relationships among all students on campus.

Should a sexual assault be reported, Department of Public Safety has officers on staff specially trained for such investigations. Counseling support services are available to students who have been assaulted.

If you believe a sexual offense has occurred:

1. DO report such conduct immediately to the University Police Department (572-5500) or your Residence Hall staff.
2. DO NOT change your clothing.
3. DO NOT bathe or clean yourself or your clothing.
4. DO NOT apply or take any medication.
5. You should seek medical or counseling assistance (Student Health Services 572-5650) after speaking with the authorities, whenever it is necessary.

## \*ON-CAMPUS STUDENT HOUSING

There are two traditional style residence halls located on campus, which house approximately 200 students each and have three wings. Additionally, there are two apartment style residence halls, each housing approximately 300 students. The capacity for on campus living is approximately 1,000 students. All units are for single, full-time students of the University, only. Children of a resident are not permitted to live with the resident unless the children are also full-time students of the University.

The traditional style residence halls have a main lobby area with a desk that is scheduled to be staffed 24 hours. The main entrance to each building is to be locked from the outside when visitation ends and unlocked at 7 a.m., according to desk procedures. The doors are never locked from the inside so that exiting is always possible. Of the six wings, two are male, three are female, and one is coed by floor. The sex of a wing may change according to the need and the single sex wings house mainly new students. The coed wing houses upperclass residents. The entrances to the wings are locked and each wing contains three floors with 22 people per floor.

There are three wings per building. Five of the six wings are accessed solely from the lobby of their respective building, with a key specific to that wing. The coed, upperclass wing, locked with a specific key is accessed from the exterior of the building.

Eleven rooms are located on each floor, each designated as a double occupancy room. A student Resident Assistant is assigned to each floor of the single sex, freshman wings. The coed wing houses upperclass students and is assigned one Resident Assistant. One full-time Residence Hall Director supervises the staff and operations of the building.

Opposite sex visitation occurs between noon and midnight Sunday through Thursday and from noon until 2 a.m. Friday and Saturday. All guests must be escorted by their host from the lobby area to the host's room and to any other part of the residence hall visited. Overnight guests must be of the same sex and check-in at the main

desk. The residence hall rooms have double hung windows and each door is equipped with a peephole and CorKey lock.

The apartment style residence halls, which opened in the fall of 1992, consist of two living complexes and a commons building. One complex is made up of three buildings, the other is made up of four buildings. One complex is apartment style with 32 efficiency units (one resident), 100 one bedroom units (two residents) and 20 three bedroom units (three residents). The second complex contains 9 efficiency apartments and 75 suites (two bedroom, four residents). Each building is 3 stories high and each complex houses approximately 300 students. There is one Resident Assistant assigned to each building and one Residence Hall Director supervises staff and operations for both complexes.

Each apartment/suite entry/exit door has a peephole. This entry/exit door is located on a breezeway and, therefore, leads directly to the exterior of the building. Locks on these doors have CorKey locks. Additionally, the suites and three bedroom apartments have Kaba locks on each bedroom door. The windows of the buildings are single hung with stops that limit the opening of the window to approximately twelve inches.

The commons building houses a 300 seat dining facility, the Residence Life offices, a convenience store, laundry facilities, a game/television room, meeting rooms, computer room, study room and a lobby information desk with mailboxes for residents of the apartments and suites. Desk operations begin at approximately 8:30 a.m. with the desk and building closing and being locked at 1:00 a.m.

The apartments and suites have 24-hour visitation with the understanding that only the residents of a specific unit will be sleeping in the unit. Anyone not assigned to the unit and sleeping in the unit is considered a guest and must register at the desk in the commons building. The guest must be of the same sex as those assigned to the apartment. The apartments/suites are single sex by unit.

Students, requesting to live in traditional residence halls or apartment style, may request a particular room and roommate(s) for the following year. Specific room/apartment assignments, though are completed by the Office of Residential Life/Housing Services.

## NORTHERN KENTUCKY UNIVERSITY UNIFORM CRIME REPORT STATISTICS

### HIGHLAND HEIGHTS CAMPUS

	1994	1995	1996	1997
Homicides	0	0	0	0
Sex Offenses	2	0	0	0
Robbery	0	0	0	0
Assault (Felony)	11	6	4	2
Burglary	1	5	3	12
Motor Vehicle Theft	1	0	0	0
Thefts	171	109	128	102
Liquor	10	12	18	23
Drugs	4	6	11	14
Weapons	1	2	2	6

### COVINGTON CAMPUS

Homicides	0	0	0	0
Sex Offenses	0	0	0	0
Robbery	0	0	0	0
Assault (Felony)	0	0	0	0
Burglary	0	0	0	0
Motor Vehicle Theft	0	0	0	0
Thefts	3	2	1	3
Liquor	0	0	0	0
Drugs	0	0	0	0
Weapons	0	0	0	0

# 1998 CAMPUS CRIME SECURITY ACT

Residence Assistants receive week-long training prior to the start of a new academic year. Incorporated in the training are sessions addressing safety and security issues and procedures. Enforcement of policies and confrontation skills are also discussed and practiced through role plays. Public Safety officers patrol the residence hall areas giving added security during the night time hours both by foot and mobile.

\*This section does not apply to Covington Campus.

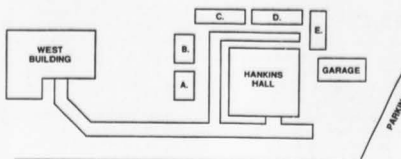
## THE STUDENT'S RESPONSIBILITY

The cooperation and involvement of students themselves in a campus safety program is essential for maintaining a safe campus. Students must assume responsibility for their own personal safety and the security of their personal belongings by taking simple, common sense precautions. For example, although the campus is well lighted, any male or female student may feel more comfortable using the University police escort service when returning to the residence halls late at night. Room doors should be locked at night and when the room is unoccupied. Valuable items such as stereos, cameras, and televisions should be marked with engraving instruments provided by the University police at no charge. Bicycles should be secured with a sturdy lock. Students with cars must park them in their assigned area and keep their vehicle locked at all times. Valuables should be locked in the trunk. Students should record all serial numbers and model numbers of all valuables bearing such identification. Students should report any suspicious-looking individuals whom they feel do not belong in their residence halls or any unusual incidents in and around the residence halls to the residential life staff or to the University police.

Your review of this report and attention to the expectations included will help us to promote a safe environment at NKU. The data shows that watchfulness, responsiveness, and your cooperation has helped us maintain your safety. Your responsiveness and watchfulness is helping to reduce campus crime to zero.

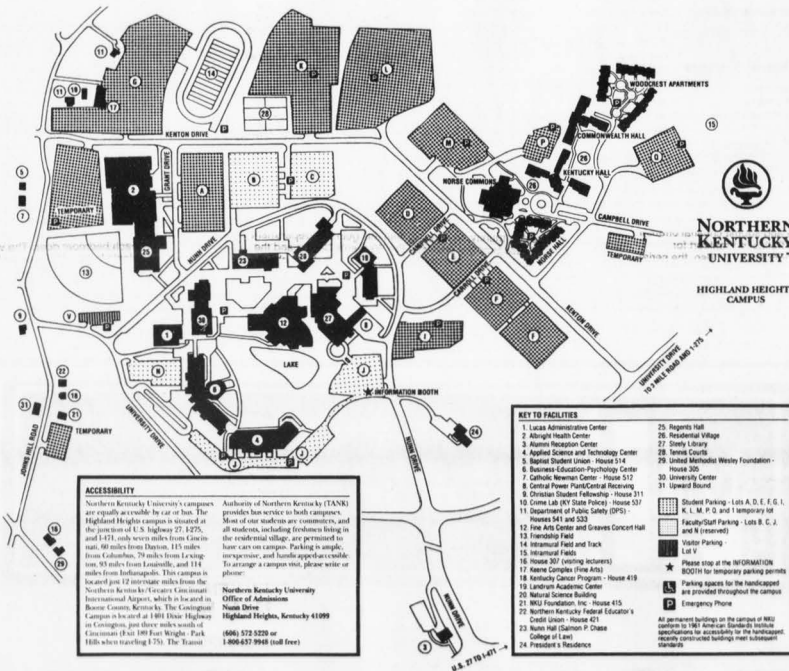
## COVINGTON CAMPUS

The Covington Campus of Northern Kentucky University is located at 1401 Dixie Highway in Covington, Kentucky, four miles south of Cincinnati, Ohio. This campus of the University is served by Interstate 75 (Interstate 75 is accessed by interstate highways 71, 74, and 275). When traveling north or south on Interstate 75 to the Covington Campus, exit at 189, labeled "Exit 189 Fort Wright-Park Hills. Proceed west to the traffic light at the intersection of Kyles Lane and Dixie Highway. Turn right (north) onto Dixie Highway, travel approximately one mile and turn right at the sign labeled "Northern Kentucky University."



### Key to Map

- A. Department of Public Safety
  - B. Storage
  - C. Citizens Advocacy
  - D. Storage (Theatre props) and occasionally Community Education
  - E. Storage (miscellaneous)
- Academic classes are held in Hankins Hall.



### ACCESSIBILITY

Northern Kentucky University's campuses are equally accessible by car or bus. The Highland Heights campus is situated at the junction of U.S. Highway 27, 1275, and I-75, only seven miles from Cincinnati, 60 miles from Dayton, 115 miles from Columbus, 19 miles from Lexington, 55 miles from Louisville, and 114 miles from Indianapolis. This campus is located just 12 minutes from the Northern Kentucky University Cincinnati International Airport, which is located in Boone County, Kentucky. The Covington Campus is located at 1401 Dixie Highway in Covington, just three miles south of Cincinnati (Exit 189 near Wright Park Hills when traveling S-75). The Transit

Authority of Northern Kentucky (TANK) provides bus service to both campuses. Most of our students are commuters, and all students, including freshmen living in the residential village, are permitted to leave cars on campus. Parking is simple, secure, and hands appear capable. To arrange a campus visit, please write or phone:

Northern Kentucky University  
Office of Admission  
Nunn Drive  
Highland Heights, Kentucky 41099  
(606) 572-3239 or  
1-800-657-9948 (toll free)

### KEY TO FACILITIES

1. Local Administrative Center
2. Allright Health Center
3. Health Reception Center
4. Applied Science and Technology Center
5. Baptist Student Union - House 514
6. Business Education Technology Center
7. Catholic Newman Center - House 517
8. Central Power Plant/Control Room
9. Christian Student Fellowship - House 511
10. Greek Life (Kappa Kappa Kappa) - House 517
11. Department of Public Safety (DPS) - Houses 541 and 553
12. Fine Arts Center and Graves Concert Hall
13. Fire Station
14. Intramural Field and Track
15. Intramural Field
16. House 207 (existing structure)
17. Kappa Kappa Kappa (K.K.K.)
18. Kentucky Center Program - House 418
19. Learning Academic Center
20. Natural Science Building
21. NKU Foundation, Inc. - House 415
22. Northern Kentucky Federal Educator's Credit Union - House 421
23. Nunn Hall (Campus P. Center College of Law)
24. President's Residence
25. Regents Hall
26. Residential Village
27. Trinity Library
28. Tennis Courts
29. United Methodist Wesley Foundation - House 206
30. University Center
31. Unions Board

- Student Parking - Lots A, D, E, F, G, H, I, M, P, Q and 1 temporary lot
- Faculty/Staff Parking - Lots B, C, J, and N (reserved)
- Visitor Parking - Lot V
- Please stop at the INFORMATION BOOTH for temporary parking permits. Parking spaces for the handicapped are provided throughout the campus.
- Emergency Phone



## 1998 CAMPUS CRIME SECURITY ACT

### ANNUAL SECURITY REPORT

Northern Kentucky University  
Department of Public Safety  
Nunn Drive  
Highland Heights, KY 41099

This publication was prepared by Northern Kentucky University and printed with state funds (KRS 57.375). Northern Kentucky University is an Equal Opportunity/Affirmative Action Institution. 02892

Wednesday, August 26, 1998

THE NORTHERNER

## NKU Winds breeze through Japan

*Symphonic Winds live Japanese style in June*

By Kelly Sudzina  
Managing Editor

Forty-three members of Northern Kentucky University's Symphonic Winds spent a week last June visiting golden buildings, exploring Buddhist temples, singing in Karaoke bars and, of course, performing in concerts—in Japan.

"They got to experience some wonderful things depending on what they did with their host families. Some of them got to visit the art museum. There was a castle in Gifu many of them got to go to," said Director of Bands Carol Dunevant. "Two of them stayed with a family where the father was a Buddhist monk and so they actually stayed in a temple."

The students spent seven days in Cincinnati's sister city Gifu, Japan, to perform in return for the Japanese students' trip here last March. They left on June 23 on a trip that took about 27 hours. But the trip home on June 30 was even longer, taking about 32 hours. While there they lived with Japanese families, performed at two concerts, taught two sessions of master classes and even had time for a little sightseeing and fun.

Trombone player Dennis Farmer said, "Probably the most interesting thing about the trip was the homestay with the Japanese families. You got to see what real Japanese life was like," Farmer said.

They spent the first and last nights in Japan in hotel rooms so that students could adjust after the

long trip, said Dunevant. Other than that, during their stay students stayed with host families in Gifu with two students in each home.

Living in Japanese homes allowed students to observe and participate in the routine of daily life in Japan. And they could not help but notice some things that were a little different.

One thing was the style of transportation. Farmer said, "Everybody rides bikes over there. There were thousands of bikes all over the street and I didn't see one bike lock." There was a train station with a bicycle lot in front, and there were cars too. But even the cars were different. Since they drive on the other side of the road, the steering wheel is on the other side of the car, saxophone player Jessy Maxfield said.

Students were also surprised at how crowded everything seemed since there were no yards, and that there was hardly any furniture in the houses. "There weren't any chairs in the house except at the computer, no chairs or couches or beds. The beds were like rolled up mats,"

Farmer said.

The types of food were something else to contend with.

"The food was really, really good. They didn't feed us raw fish all the time like I thought they would. Just every once in a while. We had, of course, rice with every meal, but for breakfast they would make all kinds of food," Maxfield said.

"I had cow tongue one night," Maxfield said. "And with beer, they

have little fish, little dried up goldfish." Farmer tried to help her describe them by saying, "It's like popcorn with eyes and a tail."

Other everyday items to choose from were seaweed, squid jerky and octopus.

The food was a little more eclectic at the reception the city of Gifu held for the students after the first day of rehearsal.

"In the whole middle of the room was a huge elaborate table that was set with any kind of food you can possibly imagine, anything from caviar to chicken fingers," Dunevant said.

Some of the students performed at the reception, as did the mayor of Gifu who sang a folk song. "It was absolutely incredible. If we had thrown something like that for them it would have been in the thousands of dollars," Dunevant said.

The day after the reception was the main concert, which was on June 26 at 6 p.m. in the Civic Center in Gifu. "It cost them approximately somewhere between \$35 and \$40 a ticket for them to come hear us and we had a full house. We were a sold out concert," Dunevant said.

The concert included about an hour and a half of music and an intermission. Most of the music selections they played were American or arranged by American composers, such as *Rolling Thunder and Americans We March* composed by Cincinnati-born Henry Fillmore. Some of the other American pieces were *Ghost Train*, *Liturgical Dances* and *Sakura*, *Sakura* (their national folk song, which means "Cherry Tree, Cherry Tree"). The last song in the program was *My Old Kentucky Home*.

"They all knew *My Old Kentucky Home*. It turns out that in their



The Symphonic Winds posed in front of a Buddhist Temple in Japan last June. All 43 members got to live with Japanese families during their seven day trip.

music classes, one of the music books they use is full of American folk songs. And they all know the words," Dunevant said.

"All the students that came over here were all really excited after the concert," Maxfield said. "They brought us flowers and they took autographs."

The Symphonic Winds played a second concert on the June 28 in Toki City.

"This is where it really sunk into them that the Japanese audiences don't know when to clap," Dunevant said. "Western music is not Japanese, I mean, there's a totally different kind of music. So they literally are training audiences when to applaud and how to know when to applaud."

In between the two concerts, Symphonic Winds members taught two master classes to students in Japanese high schools. The first was at Gifu Shō High School where there were about 20 NKU students per 25 Japanese students (and interpreters) that taught for three hours.

"The next day we went to Toki

city and we did the exact same thing, only it wasn't for three hours, it was just two hours, I think. And there were several high schools that were there," Dunevant said.

The last full day that was spent in Japan was spent sightseeing in Kyoto, which was the capitol of Japan before Tokyo was, Farmer said.

The first place they visited was the Kinkiji Pavilion, meaning "Golden Pavilion," which was a three story structure with the top two floors layered in gold leaf, Dunevant said.

After that they went to what was called a handicrafts mall. It had seven floors and housed large export companies that sold things like jewelry, kimonos, artwork, samurai swords, silk, calligraphy and woodworking.

The last stop was a Buddhist temple compound before they went back to Gifu.

Dunevant said, "We were there during the rainy season, and the one sunny day we had was the day we went sightseeing."

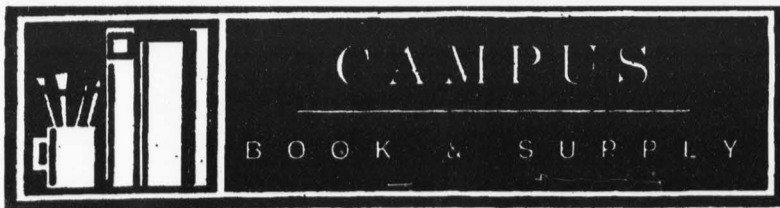
The city of Gifu paid for everything but the flight, including the food, the hotel rooms, the reception and the sightseeing trip. Farmer said, "They paid for everything except the air fare. They even paid for the cargo to be moved."

One thing a price could not be put on is the fun that the students had.

Ten of the students went to a Karaoke bar that was open until 4 a.m. on a Monday night. Since they were given microphones at the table and did not have to stand in front of the people at the bar, they were not too embarrassed to sing—all night.

"We didn't realize that we had to pay for the karaoke music, we sang 53 songs," Farmer said. "There were these Japanese businessmen too and we sang for the first couple of hours and we ended up sharing a table and singing songs with them. It was kind of funny. They went: 'Japanese style!'"

Maxfield called it a lifetime experience. Farmer summed it up by saying, "It's big for Northern and it's certainly big for each one of us."



**The Fall Semester Has Begun!**  
**Get Your New And Used Textbooks**  
**At NKU's Back To School**  
**Headquarters!**

46 Martha Lane Collins Blvd.  
Next To BW3, in the County  
Square Shopping Center  
(606) 781-7276

Wednesday, August 26, 1998

THE NORTHERNER

# Ziggy Marley booked for Musicfest '98

By Justin Lynch  
Editorial Cartoonist

Northern Kentucky University's Musicfest '98 should have something for every NKU student said Tiffany Mayse, this year's Musicfest Chairperson.

For starters, the organizers booked Jamaican reggae artists Ziggy Marley and the Melody Makers.

"We wanted to pick an artist that was universally appealing to a diverse audience," said Mayse.

According to a press release from the Melody Makers: "One of the most striking aspects of the Melody Makers' music is its

unflagging optimism. Even when the lyrics speak of oppression and anger, there is joy in their voices and a certainty that things will get better."

Other artists tentatively scheduled to perform at Musicfest, said Mayse, include funk artist Marcia Brady, local rock bands Thistle, Denial, and The Panics, R&B artist Quiet Kept, Gospel singer Shirley Merdock, and The Kingsmen dancers.

The event will take place on September 26th from one p.m. until after 10 p.m. in and around the Albright Health Center and Regents Hall.

"We're really trying to put on a

quality music festival," said T. J. Schmitz, General Manager of WRFN which is one of the sponsors of Musicfest.

"Our radio station was encouraged to get involved with this event which makes perfect sense because it's all about music and incidentally so are we," said Schmitz.

Mayse said along with the music there will also be a variety of rides and games as well as food, jewelry, craft and clothing booths.

Ticket prices are \$6 with a student ID and \$10 without. For more information, contact the Activities Programming Board in University Center room 10 or call 572-5481.



Ziggy Marley and the Melody Makers will be the headlining band at Musicfest.

Photo contributed

## Advice for new (and old) NKU students

By Kelly Carson  
Co-Features Editor

Once again it is that time of year most of us dread—the end of summer vacation. We've had our fun in the sun, but it is now time to get back in the swing of things and begin the fall semester. Returning to school after three months can be a rather difficult adjustment, especially for freshmen. Many of you may be excited about starting college, but at the same time you may feel nervous about being in a new environment with new people. Making the transition from high school to college is not easy, but here are some helpful hints to get you on the right track:

**1. Go to class every day.** If you skip class once, you are more likely to do it time and again. And if you schedule 8 a.m. classes, the temptation to skip is even stronger.

**2. Get involved.** Try to join at least one organization on campus. This is a great way to meet new people and have fun. Also, the more organizations you join, the more college activities you can list on your resume.

**3. Get to know people in your classes.** If you become friends with one or two people in each class, then you have someone to study

with and to borrow notes from if you happen to miss class.

**4. Do not lose your University catalog.** It contains useful information about class descriptions, rules and academic requirements.

**5. Learn to manage your time.** You will only be in class a few hours each week, but you will need to do a lot of reading outside of class. One professor said that for every hour in class, you should spend two hours outside of class reading or studying for that particular course.

**6. Develop good study skills.** When you have only a few exams for each class, you have a lot of material on each exam. Don't wait until the last minute to study. Take good notes, study with a friend and try to begin a week in advance.

**7. Get to know the library.** You will need to go there sooner or later, so you might as well become familiar with it as soon as possible.

**8. Do not be afraid to ask for help.** Professors have office hours to answer questions or to offer help; this is a great way to get to know your them. Also, the Learning Assistance Center (BEP 230) offers free tutoring in most freshman and sophomore level classes.

**9. Be careful with your expenses.** Your books will cost about \$200

per semester and eating on campus every day can quickly add up. You will also be receiving numerous credit cards in the mail, and from personal experience, I suggest you keep just one and tear up the others.

**10. Have fun.** Study hard and try to keep a high grade point average, but don't miss out on all the fun college has to offer!

## "Box"-creator's art on display in Cincinnati

By Lisa McAllister  
Staff Reporter

You might think a chair is a piece of furniture.

Well it is not. At least, not if you are Donald Judd. To him, it is a piece of art.

The artwork of Northern Kentucky University's "box"-creator, Donald Judd, was on display through August 23 at the Contemporary Arts Center.

The display, called "A Good Chair is a Good Chair: The Furniture of Donald Judd," consisted of smooth, rectangular pieces of furniture designed by the late Judd.

Judd took a minimalist approach to his artwork. He designed furniture that was impersonal in design,

repetitious and simple. He once stated, "A chair, or any piece of furniture, must be functional and that in designing one, an artist must deal with it's reality."

Using this philosophy, Judd was able to create a practical chair, instead of a useless, nonfunctional piece of art. "No longer is a good chair only a good chair," he once stated. "A good chair is a good chair."

The chair was durable and made out of lasting materials. He used industrial materials such as Plexiglas, stainless steel and plywood which were intended to minimize the look of it.

Judd began designing furniture in 1971 when he and his family moved to a remote Texas town with no fur-

niture shops nearby. He began making furniture purely for necessity. He started out by making a platform bed for his children and then moved on to chairs, desks, tables and shelves.

### Fun Fact About the Box

• Donald Judd disowned the sculpture because people from NKU tried to polish it.

"We didn't exactly get what he told us we would. He said it would be highly polished and highly reflective," said history professor John Demarcus in an interview last year.

"We tried to polish it to reflect what Judd originally said. We couldn't. We just did a little piece on the side. But he heard about it so he disowned it."

## REVIEWS

### "There's Something About Mary," Slapstick fun the best comedy of 1998

By Chad Aulick  
Sports Editor

What do Ben Stiller, Cameron Diaz, and Matt Dillon have in common?

All three actors star in the sensational romantic comedy, "There's Something About Mary."

Director's Peter and Bobby Farrelly score another gem with this outrageous film after their success with "Dumb and Dumber" and "Kingpin."

Stiller is Ted Strohman, a nice guy with bad luck. In the exposition

of the film, young Ted falls hard for Mary Jensen, played by Diaz. Everything seems puppy dogs and ice cream for Ted when Mary asks him to prom, but on the big night he has a horribly funny accident with his zipper that lands him in the hospital.

Years pass as Ted's infatuation for Mary grows. There's only one problem, Mary has moved away from Rhode Island. Ted has sleazy private dick Pat Healy, played by Dillon, track her down in Miami. All right, there's another problem, greasy Healy falls for Diaz and is ready to

upstage Ted to win her affection. Ironically enough, Dillon and Diaz are a couple off camera.

"There's Something About Mary" is the best comedy of 1998. The slapstick situations with Stiller, Dillon and a ferocious dog are some of the funniest scenes ever shot on celluloid. Even the usually annoying Chris Elliott, who plays Ted's best friend Dom, will lift a few laughs. Intelligent casting and an original screenplay coupled with two amateur directors provide an excellent remedy to anyone in a bad mood.

### Harvey Danger, fed up with everything

By Justin Lynch  
Editorial Cartoonist

**Harvey Danger**  
Where Have All The Merrymakers Gone?  
Slash/London Records 1998

Seattle's newest offering to the altar of mass airplay overkill is Harvey Danger.

(By the way there is nobody in the band named "Harvey Danger", just like there is no one named Jethro Tull in Jethro Tull. This generally causes confusion in people who don't read the CD booklets that come with their music. Duh.)

"Flagpole Situa" the first single off the album that will have been

played to death by the time you read this, sounds uncannily like a punked up version of The Beatles "Got to get you into my life". It's good and catchy enough to end up on K-Tel's "Hit's of the late Nineties" to be released in 2006.

"Carlotta Valdez", the opening cut, is a wonderfully revived tribute to Alfred Hitchcock's classic movie Vertigo.

To tell you the truth, these guys are kind of upset. Not upset like that guy from the Counting Crows who is generally consumed with self pity, but the upset that comes with just being fed up with everything. Heck they're probably upset about the Hitchcock flick too.

"...Been all around the world and found that only stupid people are breeding..."

"...if you've got greatness in you please do us all a favor and keep it to yourself..."

These are not the lyrics of songs you'll hear Mickey and Minnie singing at Disney World any time soon.

The short and tall of this CD is this: A collection of pop songs written in the tone honored method of soft verses with explosive choruses. Nothing innovative, yet nothing grating or overdone. It's definitely formulaic but with a twist.

I hope they don't find this upsetting. But they probably will.

## Campus Calendar

### Wednesday, Aug. 26:

- Sorority Rush "Bid Day" 4:30 p.m. UC Theater
- Residential Village cook-out 4:30 p.m. Norse Commons
- APB "Street Dance" Luau night 8 p.m. Norse Commons Circle

### Thursday, Aug. 27:

- Women's center "Women's Equality Day" 11 a.m.-1 p.m. UC lobby
- "Your Path to Success" 7 p.m. Kentucky Hall

### Saturday, Aug. 29:

- Welcome picnic for International students Noon Highlands Park

### Monday, Aug. 31:

- Campus Recreation "Open House" Albright Health Center

### Tuesday, Sept. 1:

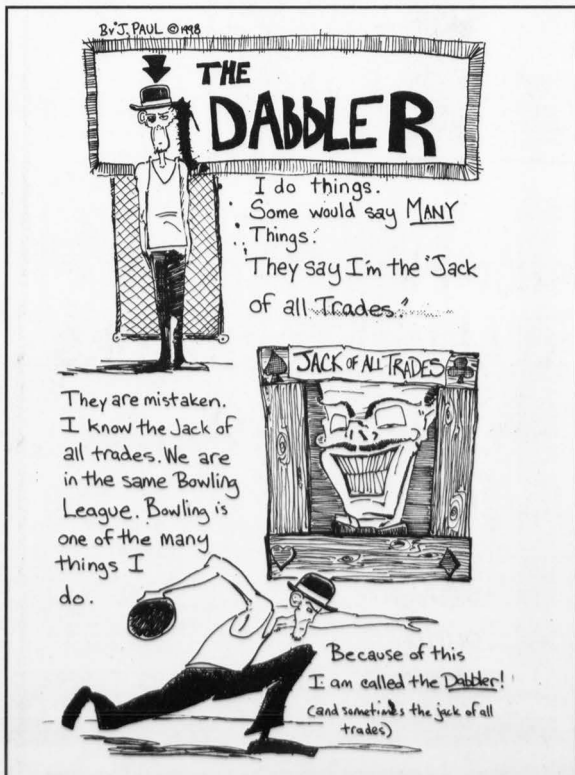
- Student Organization Rally 11 a.m.-1 p.m. UC plaza
- women's Center "survivor's Support Group" 3-4 p.m. UC 232

### Wednesday, Sept. 2:

- Student Organization Rally 11 a.m.-1 p.m. UC plaza
- Starving Student Expo. 11 a.m.-4 p.m. UC plaza (free food)
- APB "Make Your Own Music Video" 10 a.m.-2 p.m. UC plaza

### Thursday, Sept. 3:

- FreshFusion 5-9 p.m. UC plaza





Wednesday, August 26, 1998

THE NORTHERNER

## Women's Volleyball Looking Top Notch for New Season

Jeff McCarty/The Northern  
Coach Mary Biermann gives advice to players in last year's season.By Chad Aulick  
Sports Editor

The women's volleyball program at Northern Kentucky University is looking to win a national championship this year.

Five starters, including 1995's freshman of the year, Molly Donovan, are returning to a team that won the Great Lakes Valley Conference Green Division championship and the GLVC tournament last season. They also went 16-0 in their conference last year.

"This team has more potential than any I have coached here at NKU by the end of the season we could be one of the top teams in the nation, and our goal is to win a national title," coach Mary Biermann said in a recent news release. She added that Donovan is the key to the team's success and should be an All-American candidate this year.

Donovan, who recorded over 1,000 assists last season as their setter, has returning company. Jenny Jeremiah and Jenni Long are coming back to the starting rotation. The outside hitters combined for over 600 kills and 700 digs in last season's effort to win a championship. Junior Liz Lamping, who recorded over 300 digs last year, is back as well as sophomore middle hitter Jenny Jones.

Banker and senior outside hitter Kim Jones.

Promising new recruits include All-State middle hitter Denise Barber and freshman outside hitter Gretchen Gristead. Other recruits include freshmen Beth Gaistrick, Julie Harbison, Julie Oliver, Luisa Gomez, Amy Ryan, and sophomore transfer Robbie Casey.

"I'm here to push other people, to help the freshmen out and to be a leader. I don't expect to start, but to come off the bench and contribute," setter Robbie Casey said.

Chrisy Commoner, a Thomas More middle defense back and friend of Casey's, recalls on their 15-3, 15-3, 15-12 loss to Northern last year in comparison to her projection of the new season.

"They'll do good. A lot of good freshmen are coming in. Robbie Casey is transferring from Midway," Commoner said. "We'll probably lose, but it will be a closer match than it was last year."

The Norse squad will hold their first match at home on Aug. 26 at 8 p.m. They play Wheeling Jesuit.

What will it take for these women to win a NCAA championship?

Well, Biermann knows it will take a lot of good play and a little bit of luck. Hopefully for Northern fans that index will commence on Sept. 26.

Jeff McCarty/The Northern  
Junior Jenny Long returns for her third year in the starting rotation.

## Exposition of Women's 1998 Volleyball Schedule

Day	Date	Opponent	Time
Fri.	Aug. 28	Northwood (Mich.) vs. Bellarmine	6 p.m.
		NKU vs. Wheeling Jesuit	8 p.m.
Sat.	Aug. 29	Northwood vs. (Mich.) vs. Wheeling Jesuit	noon
		Bellarmine vs. Wheeling Jesuit	2 p.m.
		NKU vs. Norwood	4 p.m.
Wed.	Sept. 2	Mt. St. Joseph	7 p.m.

## Year in Review

Baseball: 13-24-1 overall, 3-18-1 GLVC (12th Place).  
Men's Basketball: 23-7 overall, 15-3 GLVC (second place).  
Women's Basketball: 18-10 overall, 13-5 GLVC (fourth place).  
Men's Cross Country: GLVC Championships (seventh place).  
Women's Cross Country: GLVC Championships (seventh place).  
Men's Golf: GLVC Championships (seventh place).  
Men's Soccer: 7-11-2, 4-6-1 GLVC (sixth place).  
Women's Soccer: 7-11 (did not compete in GLVC).  
Women's Softball: 18-23 overall, 9-17 GLVC (ninth place).  
Men's Tennis: 15-9 overall, 7-5 GLVC (fifth place).  
Women's Tennis: 3-12 overall, 3-6 GLVC (seventh place).  
Women's Volleyball: 29-6 overall, 16-0 GLVC (GLVC champions).

**NKU Campus Rec Fitness Classes**

Call 572-5197 or stop by AHC 104

**REGISTER WED. AUGUST 26th**

**Classes:**  
Step MVMT Noon, MW 4 pm & 7:15 pm, TR 12:15 & 5 pm, Sat. 10:30 am  
H/L/MW 5 pm  
Hip-Hop Fri. 4 pm  
Water Fitness MW 5 pm

## Welcome, Students!

The NKU Bookstore is **your** campus store; we're here to fill **your** student needs.

That's why you can find all the textbooks and supplies you need for class and a wide selection of NKU clothing and gifts.

It's also why we support student groups and activities during the year, including scholarship funds. Any extra money from bookstore operations stays right here on campus, where it's used to directly benefit you.

If you have any questions or suggestions, please let us know. After all, we're all on the same team.

## NKU BOOKSTORE

### Your Student Store

Conveniently located on the ground floor of the University Center

572-5141

bookstore@nku.edu

http://www.nku.edu/~bookstore

Your Connection on Campus

**Campus Recreation**

**Upcoming Events**

Wed. August 26 Putt-Putt in the Plaza 11-2 pm  
Wed. August 26 Fitness Classes  
Registration Begins  
Call 572-5197 or stop by AHC 104

Thurs. August 27 Putt-Putt in the Plaza 11-2 pm  
Tues. Sept. 1 Tennis Singles, Doubles, Co-Rec  
Entry Deadline

Thurs. Sept. 5 Men's Softball  
Entry Deadline

Fri. Sept. 4 Men's & Women's Flag Football  
Entry Deadline

**572-5197**

Wednesday, August 26, 1998

THE NORTHERNER

## 'Wag the Dog' Scenario?

By Sidney Framinghammer  
Staff Reporter

So, was the strike on Osama Bin Ladin's terrorist camp by the U.S. an attempt to divert attention from Clinton's scandals? Or, was it a well deserved retaliatory strike against terrorists?

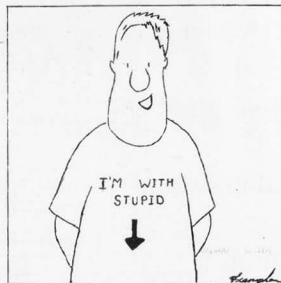
Probably 'yes' to both questions. But how about a third possibility that unfortunately comes to mind with the increasing awareness of what this administration is about and who and what this president seems to be?

It seems quite believable that with

Clinton's spin and damage control systems that he would have some diversion scenario up his sleeve (so to speak), for just such a time as this.

Why act Presidential and send missiles to destroy Osama Bin Ladin's camp at such a reasonable time as say, after he bombed an American Embassy, or heaven forbid to save American lives and take him out as soon as we find out he bank rolls terrorism?

It is so much more opportune to be presidential right after you are forced to show the American public you are at the very least a sexual predator and per-jurer.



## North Poll

## What Are Your Goals For The Fall Semester?

Emily Hastings  
Demotivator  
Speech

"To stay focused on academics and to try to have better time management."

Jennifer Shaffer  
Communications

"Have fun and work hard."

Josh Jett  
Covington  
Criminal Justice

"To stay out of the Dean's office and get on the Dean's list."

Janet Nyagah  
Nairobi  
Information Systems

"Balance my time between work, school, and play time."

Jessica Enderle  
Harrison, OH  
Anthropology

"To start out of trouble while having fun."

Dale Pontz  
Louisville  
Political Science

"To start a mentoring program for freshmen."



## THE COMEDY OF ERRORS CONTINUES...



## THE NORTHERNER

Editor In Chief: Stef Sanderson  
Executive Editor: Anna Weaver  
Managing Editor: Kelly Sudzina  
General Manager: Jennifer Veon  
Business Manager: Matt Hollenkamp  
Production Manager: Margie Wise  
News Editor: Forrest Berkshire  
Features Editor: Kelly Carson  
Sports Editor: Chad Aulick  
Photo Editor: Suzanne Fleming  
Copy Editors: Jay Berry & Tony Casnellie

Online Editor: Wes Shaffer  
Editorial Cartoonist: Justin Lynch  
Distribution Manager: Dan Cooley  
Sports Photographer: Jeff McCarty  
Staff Writer: Wayne Yeager, Sidney Framinghammer  
Faculty Advisor: Pat Moynahan

## THE NORTHERNER

University Center Suite 209  
Highland Heights, KY 41099  
Office: (606) 572-5260  
Business Office: 572-5232  
Editor In Chief: 572-6128  
Fax: 572-5772  
Email: northerner@nku.edu

The Northerner is a member of the Associated Collegiate Press and the Kentucky Intercollegiate Press Association. Publication is weekly on Wednesdays excluding university observed holidays and final examination weeks.

## EDITORIAL POLICY

The Northerner welcomes all letters to the editor and editorials. We request that they be less than 600 words, typed and sent preferably via email to northerner@nku.edu. The Northerner reserves the right to refuse any letter to the editor or editorial and to change spelling and grammatical errors.



Wednesday, August 26, 1998

General Manager

Jennifer Veon

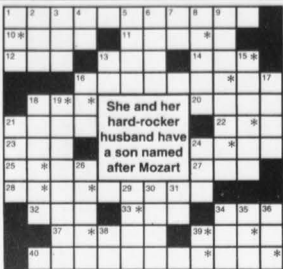
Business Manager

Matt Hollenkamp

572-5232

THE NORTHERNER

## TV CHALLENGE



The identity of the featured celebrity is found within the answers in the puzzle. In order to take the TV Challenge, unscramble the letters noted with asterisks within the puzzle.

- ACROSS**
- Star of David Alan Grier's series (2)
  - Rich or West
  - The Law; 1989 Steven Seagal movie
  - Star of Nash Bridges
  - Undergarment
  - On Our... (1994-95)
  - Actress on Mork & Mindy (2)
  - Ten fifty-one
  - Max, bride-to-be
  - 1977-81 Katherine Helmond sitcom
  - Catchall abbr.
  - Carmen, for one
  - The Lawrence... Show (1955-71)
  - Length times width
  - Beverage
  - One who stars as a retiree (2)
  - Late Mino
  - Buttons
  - Evening Shade role
  - Hawatha's home
  - Close
  - 1964-69 Ryan O'Neal drama series (2)
- DOWN**
- Maxwell, to Brighton
  - Much... About Nothing; '93 Michael Keaton film
  - A... Called Sloane (1979-80)
  - Initials for Felix Linger's roommate
  - A... December; '73 Sidney Poitier flick
  - Death Has... Reputation; 1991 TV movie
  - "H... Silver, away"
  - Declares
  - The...; '61-'62 police drama
  - Monogram for the star of M\*A\*S\*H
  - Intale
  - Great Expectations hero
  - The...; 1956 Paul Newman POW film
  - Bell's role in the '96 series Homeboys in Outer Space
  - Part of the title of Tom Snyder's show (2)
  - Foreign auto
  - The... We Work
  - Veronica's portrayer
  - Sweet snack
  - Who Has... the Wind; '77 Jose Ferrer film
  - Dorothy's initials
  - Ex-coach Parseghian
  - The... Diamond Show (1966-67)
  - Crawford, Private Eye; '83 Tom Conway series
  - 199-1963 Cliff Robertson movie
  - Concor; 1970 Jim Brown film

© TVData Features Syndicate

## WORD LINK

Fill in the missing letters in the "TV Words" below.

OHN LITH OW

AG

ONAL D CK

THE SINGL G

Now rearrange the letters you filled in to spell the name of

A Courtroom Show:

\_\_\_\_\_

TV Words: John Lithgow, JAG, Donald Duck, The Single Guy, Answer: Judge Judy.

© TVData Features Syndicate

## The Northerner is Hiring!

Positions still available:

572-5260

- Writers
- Photographers
- Designers
- Ad assistants
- Cartoonists and more!



PREGNANT?

NEED HELP?

Offering Hope & Choices to Women Facing Unplanned Pregnancies  
FREE & CONFIDENTIAL SERVICES

- \*Pregnancy Testing
- \*Prenatal & Fetal Development Information
- \*Counseling & Education
- \*Adoption Education & Referrals
- \*Counseling Information
- \*ADOB & STD Information

Edgewood  
341-4746  
Lafayette  
431-0011  
Williamstown  
824-9133

## HOROSCOPE

By C.C. Clark - ©TVData Features Syndicate

August 23 through August 29, 1998



**Aries (March 21 - April 19)**  
Romance is in the air, but it may be a bit one-sided. A little time and space are needed to clear your head.



**Taurus (April 20 - May 20)**  
You feel someone is taking advantage of your kindness, and you may be right. Make your desires and needs known.



**Gemini (May 21 - June 20)**  
A close companion needs you to listen, but this person is not really looking for advice. Travel plans may need to be postponed.



**Cancer (June 21 - July 22)**  
It is necessary to respect someone else's opinion, even if you don't agree. This is a great period of growth for you.



**Leo (July 23 - Aug. 22)**  
You've been worrying about finances, and the whole mess seems hopeless. It may be rough right now, but things will pick up soon.



**Virgo (Aug. 23 - Sept. 22)**  
If you have been dishonest with someone close to you, it is time to make things right. It is never easy to admit fault.



**Libra (Sept. 23 - Oct. 22)**  
Though you may find yourself oddly attracted to someone, he or she may not be the right person for you. Progress slowly.



**Scorpio (Oct. 23 - Nov. 21)**  
Someone may ask you to keep a secret, and it won't be easy. There are times when you wish other people didn't depend on you for everything.



**Sagittarius (Nov. 22 - Dec. 21)**  
Another person's anger is causing you trouble, and it is time to speak up about it. Help him find a more creative way to vent.



**Capricorn (Dec. 22 - Jan. 19)**  
Problems at work will keep you busy. Avoid someone who is making unreasonable demands on your time.



**Aquarius (Jan. 20 - Feb. 18)**  
Your need for perfection is causing trouble in a relationship. Sometimes we have to remember that people don't live in fairy tales.



**Pisces (Feb. 19 - March 20)**  
You may accidentally be hurting someone by helping him too much. Learn to let go and let others have their own failures and successes.

Born this week:

- |  |  |
|--|--|
| Aug. 23 - Barbara Eden, Shelley Long, Rick Springfield | Aug. 27 - Barbara Bach   |
| Aug. 24 - Claudia Schiffer                             | Aug. 28 - Scott Baio, Jason Priestley, Emma Samms, David Stern |
| Aug. 25 - Anna Archer, Sean Connery                    | Aug. 29 - Rebecca De Mornay, Richard Gere, Robin Leach         |
| Aug. 26 - Macaulay Culkin                              |  |

## NORTHERN KENTUCKY UNIVERSITY ALBRIGHT HEALTH CENTER STUDENT FAMILY MEMBERSHIPS

ALL NKU STUDENTS TAKING 6 OR MORE CREDIT HOURS THIS SEMESTER ARE ELIGIBLE TO PURCHASE HEALTH CENTER FAMILY MEMBERSHIPS. THE RATES ARE AS FOLLOWS:



**\$25/SEMESTER - SPOUSE OR DEPENDENT CHILD**  
**\$35/SEMESTER - SPOUSE AND DEPENDENT CHILDREN**

**LOCKER RENTALS AVAILABLE**

**\$6/SEMESTER + \$5 REFUNDABLE DEPOSIT**

IF YOU HAVE ANY QUESTIONS, CONTACT THE DEPARTMENT OF CAMPUS RECREATION IN THE AHC ROOM 104 OR CALL 572-5197.

## GYMNASTICS COACHES WANTED



We are looking for enthusiastic college students with a background in gymnastics to train as coaches for young children. These part time positions offer evening and weekend hours.

Five Star Gymnastics • 1405 Jamike Lane  
Erlanger, KY 41018 • (606) 647-0660