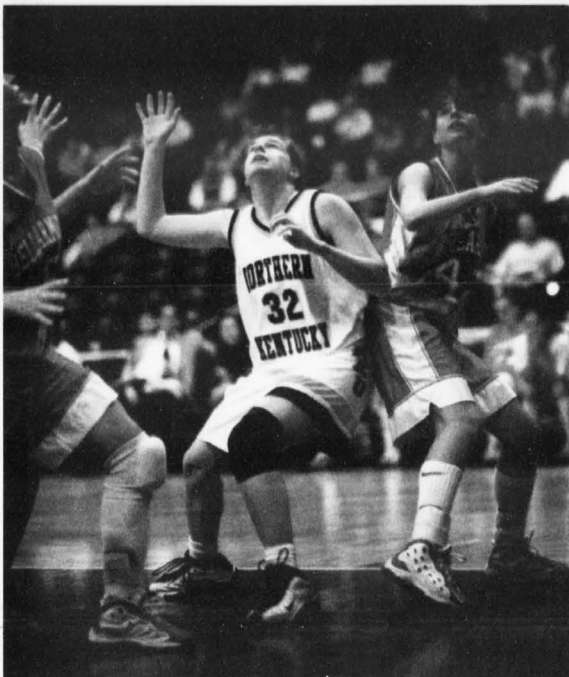


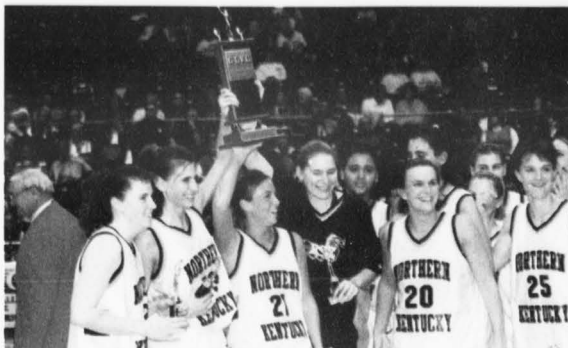


## We are the champions: Women's basketball wins GLVC tourney; NCAA regionals here Thursday



Norse guard Shannon Roddy holds her ground as she waits for a rebound in the 74-72 Norse victory over Bellarmine College.

Jeff McCurry/The Northerner



Jeff McCurry/The Northerner

The Norse take a moment to enjoy their victory after winning the Great Lakes Valley Conference tournament on Wednesday.

### Women pull off hat trick in GLVC tournament

By Bruce Reller  
Assistant Sports Editor

The Northern Kentucky University women's basketball team has been used to finding ways to win all season.

As it prepared for the Great Lakes Valley Conference tournament, there was no doubt that it was ready to come out on top once again.

NKU started its quest for the GLVC crown on Wednesday against Kentucky Wesleyan College in the first round of the tournament. Kentucky Wesleyan started the game on a 5-0 run. NKU answered with a 12-2 run.

Jessica Jensen scored eight of the Norse points, including two jumpers and a three-pointer. NKU extended its lead to 26-15, as Katie Kelsey and Shannon Roddy hit back-to-back three-pointers, followed by layups by Michelle Cottrell and Michele Tuchfarber. A late run by KWC cut the NKU lead to seven at the break, 42-35. Cottrell scored 16 first-half points for the Norse.

In the second half, the Norse built a 16 point lead at 61-45. Things got no better for the Panthers, as NKU coasted to a 97-71 victory. Cottrell led the way for NKU with 23 points. Tuchfarber added 18 points and

Jensen had 16 points for the Norse. Angie Johnson had 21 points for Kentucky Wesleyan, while Kara Meyer and Ladrina Sanders had 14 points apiece for KWC.

On Friday, NKU faced its next challenge as it took on the University of Southern Indiana in the semifinals of the tournament. Once again, NKU fell behind as Southern Indiana took a 7-5 lead. Once again, the Norse came back. Led by the play of Cottrell, NKU went on a 9-4 NKU run to take a 14-11 lead with 13:19 left in the half. USI struck back with a 7-0 run to take a 18-14 lead.

See CHAMPIONS, Page 7

## Locked in Landrum

*'Help. We are stuck in here.'*

By Justin Braxton-Brown  
Staff Reporter

A speech communication class in the Landrum Academic Center at Northern Kentucky University ended on time February 17, but the students could not get out of the classroom.

Students of Pam Tyahur's speech communication class found themselves stuck in LA 105 when the door would not open.

According to Tyahur, the building has slightly sunk on one side, causing the door frame to slant. The door is hung in such a way that makes it difficult to open when the frame is slanted. According to Tyahur, maintenance "fixed" the door during the previous weekend.

Tyahur said she and the students thought to unscrew the hinges, but when a search of the classroom did not yield a screwdriver, they explored other options.

Some of the trapped students pulled on the door handle while Tyahur and other students pounded

on the walls. When that failed, a student slid a note under the door.

According to student Stephanie Daudistel, the note said, "Help. We are stuck in here."

Students in the hall found the note and responded with a note that said, "We're going to get a key." The students returned with the key, but it would not open the door.

Pat Moynahan, chair of the communication department, was called to the classroom and was able to unlock the door using a student ID. Moynahan slipped the ID through the crack between the door frame and the door. The ID slid over the latch and the door opened.

According to Tyahur, her class was stuck in the room for 10 or 15 minutes. "I've been locked out of a lot of places before, but I have never been locked in," she said. "That was a first."

Daudistel said, "I thought it was funny. Other students were not too happy about being locked in a classroom for 15 minutes."

## Students award influential professors

Jeffrey B. Williams  
Staff Reporter

Eight alumni and two professors of Northern Kentucky University were recently honored at the NKU Alumni Association's annual awards banquet.

The professors were nominated by students whom they cited as having the biggest impact on their academic experience at NKU.

The Strongest Influence Award was given to Clinton G. Hewan, associate professor of political science and to J. Patrick Moynahan, chair of the communication department and associate professor of journalism.

"This award means more to me than any I have won at any other time because of who the judges are," Moynahan said. "The judges are the people that you are in the business to try to help the students."

"The goal of any good teacher is to help students develop the personal, mental and professional skills to succeed in any career they choose. It's very rewarding because it says what you are trying to do is working. The most rewarding moment is when someone says you made a difference," Moynahan said.

Hewan said he also has won numerous awards, but that he is deeply honored and humbled to receive the Strongest Influence Award. He said the award means a lot to him because he is being honored for having a direct and significant influence on student's lives.

Hewan said, "Students at NKU can achieve



Suzanne Fleming/The Northerner

Dr. Clinton Hewan, winner of the Strongest Influence award, works in his office.

as much as students from Harvard or Princeton. The award means a tremendous amount because it comes from the students. Most teachers want the award because it means that the students are taking the time to nominate them. Again, I am deeply honored and humbled to receive this award and I want everyone to know that."

The award is given to faculty or staff members whose teaching, counseling, or advising has had a strong and lasting impact on the life of the nominating alumnae.

Alumni Association Award winners are initially nominated because of their measure of success, a student's appreciation for a particular faculty or staff member for guiding them to success or because of the charitable temperaments fostered in them at NKU and

demonstrated in their communities.

The Alumni Association is composed of 15 Alumni Affinity Organizations. Nancy Perry, the association's secretary and one of the coordinators of the event, told *The Northerner* in an interview earlier this year, "The alumni have a strong affinity to their departments. They want to give back to the university and create a network for themselves and the students." She said the relationship between students and alumni is mutually beneficial because of the connection.

Another of the association's employees, Shirley Welitzkin, said, "All of the award recipients are very special people to NKU. They're proud of NKU. They carry it into the workplace."



### NEWS

Language courses  
offered at NKU

P2

### FEATURES

African Diaspora Festival  
aims to share African culture

P4

### SPORTS

NKU women grab tournament  
host and No. 1 seed

P6

Wednesday, March 3, 1999

THE NORTHERNER

# NKU offers community Spanish language classes

By Lisa Baker  
Staff Reporter

Northern Kentucky University's Community Education program is placing heavy emphasis on a growing Hispanic population by offering courses in Spanish language and culture.

Local law enforcement, emergency response and school personnel, among others, are feeling the effects of the increase estimated at 30 percent, according to a news release.

"Police officers, dispatchers, teachers and others are having difficulty understanding and communicating with Latino members

of their communities," said Linda Nesbitt, NKU community education coordinator.

"This can cause problems ranging from simple to serious misunderstandings that may lead to frustration, anger and even inappropriate behavior on one or both sides that could ultimately prove hurtful or harmful," she added.

To enable these professionals to communicate clearly and effectively with Spanish-speaking people in the area, NKU Community Education in cooperation with the NKU Department of Language and Literature and Department of Public Safety is currently offering classes to train individuals in con-

versational Spanish and to introduce them to Hispanic culture and customs.

Nesbitt said a class called "Spanish language essentials and Hispanic culture and customs," which is geared toward law enforcement and emergency response personnel, started on Feb. 3 and runs through March 24. It is a seven class session and the instructor is Pilar Valencia, who is a professor in the NKU literature and language department. There are eight police officers from across Northern Kentucky enrolled in the class. This class is being held at the NKU Covington Campus at 1401 Dixie Highway.

There will also be a one day workshop titled "Spanish language essentials" for law enforcement and EMT on March 27. NKU Community Education is collaborating with the community education program in Grant County for that program, and it will be held in Williamstown at the NKU Grant County site. It is still possible to sign up for this program by calling 392-2400.

Nesbitt believes NKU's curriculum, which was developed by a panel of professionals representing law enforcement, EMS, social work, education and professional language educators, will better prepare those charged with protecting, safeguarding and educating the public for carrying out their duties and responsibilities and will result in improved relationships with the Hispanic community they serve.

Patrolman Michael Chowning, a Ft. Thomas police officer and a member of the Spanish Language and Culture Program Advisory Board, said the classes will be



Jeff McCarty/The Northern  
Nesbitt believes NKU's curriculum, which was developed by a panel of professionals representing law enforcement, EMS, social work, education and professional language educators, will better prepare those charged with protecting, safeguarding and educating the public for carrying out their duties and responsibilities and will result in improved relationships with the Hispanic community they serve.

extremely valuable.

"Effective communication with every citizen is essential. Without the basic knowledge of a second language, particularly Spanish, we cannot do our job to the best of our ability," he added.

Sgt. Michael Nutini, Department of Public Safety, felt it should be mandatory for all police officers to attend the classes.

When asked about the possibility of offering the series to students facing similar issues, Nesbitt said they may offer a "non-credit only" course in the future.

"There's a possibility that we'll

be adapting to Spanish program to health care providers. It's under consideration and development," Nesbitt said.

They also plan on having a workshop and a seven week class offered as a series in the fall.

If interested, or to receive a comprehensive catalog of NKU Community Education classes, including personal enrichment courses, call NKU Community Education Registration (606) 392-2400 and leave a name and telephone number to receive more information.

Information can also be found at the web site <http://www.nku.edu/~comm>

## D.P.S. REPORTS

A female assaulted a male student at the dorms. According to the male subject, the female came to his dorm and pounded on his door, pleading to see him. However, the male said, he managed to escape to parking lot P by climbing out his dorm room window and dropping to the ground below. On his way back to his room, on the stairs between Kentucky Hall and Commonwealth Hall, the female confronted him. She stopped him and struck him in the back of the head four times, he said. According to DPS reports, there are no visual markings of the attack on the male subject. DPS officers have been unable to contact the female in question.

An RA in Commonwealth Hall reported smelling marijuana in the dorms. He said he noticed the odor immediately after a resident

of the area opened his dorm door to exit his room. The smell was very strong on the third floor of the E wing, according to the RA who phoned the complaint to DPS. He summoned DPS to the lobby of Commonwealth Hall. DPS has filed a report and sent it to Patty Hayden and Dean Lamb.

The Highland Heights Police Department radioed DPS to inform them of a possible DUI on University Drive. The Cold Spring Police Department responded and stopped the vehicle on University Drive just

south of Num Drive. DPS pulled in behind to assist the Cold Spring police officer. The driver admitted he had been drinking to the police. He had his last drink about one hour ago, he said. The Cold Spring officer administered an alphabet test (K through Q). The driver hesitated, causing him to fail the test.

DPS officers responded to the call of the Highland Heights Police Department, when a Highland Heights officer asked for an available unit with handcuffs. The officer had three males under arrest at Highland Meadow apartments. DPS lent eight handcuffs to the officer and remained on the scene at the request of the arresting officer until the three men were transported to the Campbell County Justice Center by the Highland Heights officer.



## \$8.50-\$9.50 PER HR

### PART-TIME JOBS FULL BENEFITS

UPS WILL BE ACCEPTING APPLICATIONS FOR PART-TIME LOADERS/UNLOADERS TO WORK THE MORNING SHIFT IN FLORENCE, KY. THE SHIFT RANGES FROM 3:30 A.M. TO 8:30 A.M. MONDAY THROUGH FRIDAY NO WEEKENDS!!!

INTERVIEWS WILL BE HELD ON CAMPUS IN CAREER DEVELOPMENT ON THURSDAY, MARCH 4TH FROM 11 A.M. TO 3:00 P.M.

INTERESTED STUDENTS ARE ENCOURAGED TO COME TO THE CAREER DEVELOPMENT CENTER (ROOM UC 320) BETWEEN 10:00 AM AND 2:00 PM ON JANUARY 26TH TO COMPLETE AN APPLICATION AND HAVE A SHORT INTERVIEW.

QUESTIONS? PLEASE CALL CAREER DEVELOPMENT AT 572-5680.



## Cholesterol Screening

March 23, 8:30-11:15  
Student Health Office, UC 300  
Call 572-5650 for an appointment

Cost \$5.00

### Screening Options

Total Lipid Profile:  
Total cholesterol, LDL (bad),  
HDL (good), triglycerides  
Fasting Required

Total Cholesterol and HDL  
(Good)  
Non-Fasting

Test Results Available April 6, 1999  
at 1/2 hour education class (11:30 or 12:30)

## JOB expo

### When is it?

Tuesday, March 30, 1999  
2:00pm - 6:00pm  
Regents Hall

### Why should you attend?

1. 150 hiring employers!
2. You might land your dream job
3. FREE FOOD!!!!

Visit the NKU Career Development Center UC 320 for more information

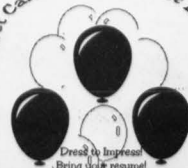
### What is Job Expo?

A Part-Time, Full-Time, Co-op, Career, Summer, Teacher, Professional Job Fair!

### Who's it for?

Everyone! Seniors, Freshmen, Juniors, Sophomores, Alumni, Your Sister, Your Brother, Your Best Friend....

Get Carried Away at Expo!



Wednesday, March 3, 1999

THE NORTHERNER

## Ishmael value questioned

By David Bishop

I was deeply saddened to return from a week's conference and discover another sculpture spat in your February 17 issue. "Ishmael" is a deeply disturbing work. It should be relocated in the Meadow of Disturbing Ideas with all deliberate speed.

Several aspects of this work are unsettling. Perhaps we need a warrior for social responsibility, since it seems that the art-for-art-sake crowd is having its way again.

The humanoid figure is naked. Is NKU, in its relentless quest for all manner of diversity, advocating public nudity? If this sculpture must remain, I suggest we retain Tommy Hilfiger to clothe this poor soul. Think of it as a naming opportunity. In addition, the central figure looks more like a 'droid from Star Wars, all metallic and angular.

Couldn't we add a hairpiece and something organic - say virgin Naugahyde - for the skin areas? I think it's important that we identify with the essential humanity of a figure we'll see every day.

I'm certain that Secular Humanists will be upset, not just by the robotic qualities of Ishmael, but also by the nihilistic implications of the jail cell, the degrading use of the slave shackles, and the passivity of the figure.

Enough of this depressing stuff!

We need uplift - feathers, clouds, soaring. We need models - action figures with purpose and pulsing torsos.

Bible believers, if they've read Daniel Quinn's *Ishmael*, may find themselves in rare

alliance with Secular Humanists.

Fact: The sculptor had admitted being inspired by this book.

Fact: Daniel Quinn has connections with the Masons and the Trilateral Commission. (Well, at least I can prove he's an ex-Jesuit.)

Fact: This book features an ape that is smarter than humans. Fact: This ape has the audacity to trash the American Way of Life, especially manifest destiny and capitalism. Fact: This book relies on the propaganda device of either/or-ism. (Remember Eldridge Cleaver?) Quinn uses the New-Age ploy of dividing the world into Leavers and Takers. Fact: Someone told me she heard Quinn say "One-World" on *Rosie O'Donnell*.

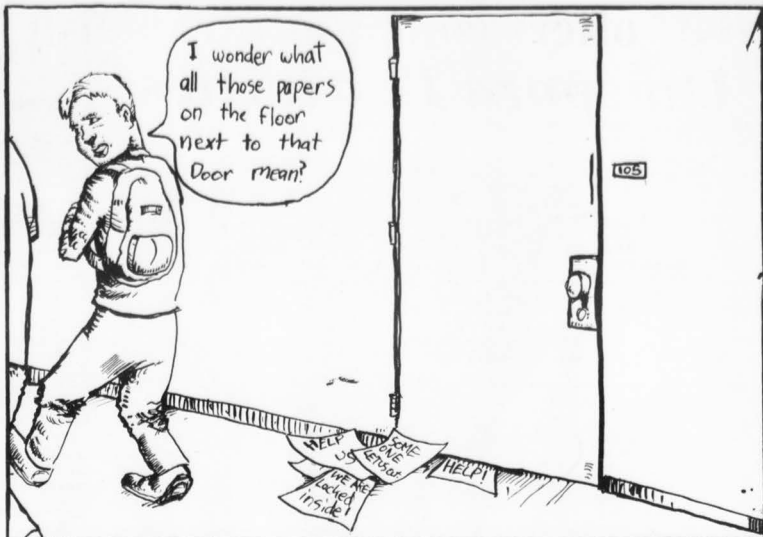
In short, this sculpture demeans humanity in general and glorifies a highly suspect person. It deserves to be seen somewhere but only with accompanying extensive viewers' guide material.

In place of "Ishmael's Cage," I recommend we recruit Decker Crane (another naming opportunity) and hang a sign saying, simply "Absence," or "Void," or some such one-word placard.

As Mike Baker said, we need to show "sensitivity in dealing with that site, given its history." We can do no more.

I'm too dense to understand the connection my friend Don Kelm saw between this issue and the Bert Brecht quote

"Grub first. Then ethics." But I do understand what Susan Sontag meant when she wrote, "Taste is the revenge of interpretation upon art."



## Alternative to social security identification

By Gary I. Eldridge

For many years now I have heard of, read about and seen the dangers of those who gain access to social security numbers, perpetrating fraud upon individuals. Again, just recently, NBC's *Dateline* showed how easily they gain access to all types of information, including bank accounts, credit card numbers, driver's license numbers, etc., all beginning with simple access to a social security number.

Years ago, I removed the imprinting of my social security number from my checks. When my driver's license comes up for renewal later this year, I have the

right, which I will exercise, to remove my social security number from the license. In general, I refuse to give my social security number as a form of identification, as is my right under federal law.

Yet, as a matter of course here at NKU, I must give my social security number when I go to the Bursar's Office, as a form of identification within the classroom, making a purchase by check in the bookstore, etc. But I cringe when I am forced to give my social security number at the Bursar's office and watch them write it across the face of a check. I fear what is possible as the check makes its way through the system. The social security number is, as they say, the

lingua franca of life at NKU.

As a result, I have stopped making purchases by check at the university bookstore. I rarely give my true social security number on campus unless absolutely necessary. I have yet to be corrected on that which leads me to question how important it is to ask.

We students are issued picture identification cards and I assume that the numbers imprinted on each card are as unique to the student as are our social security numbers. In case of a breach of access, however, I believe the consequences would be less far-reaching. So this begs the question as to why the administrative offices

expend so much effort to assign an individualized number when they who assign the number never use it?

I ask you, Mr. President, to please do as recommended by financial institutions and fraud prevention specialists across the country and reduce your students' exposure to fraud. I request that the need for stating our social security numbers be limited to the absolute minimum necessary here at NKU. Further, I ask that you stop any unnecessary usage of our social security numbers immediately. The danger of major financial fraud is too high for this to continue.

Thank you.

## North Poll

Would you like to see  
*Ishmael's Cage* replace the  
*Grooms* sculpture?

Clinton Bouldin

Undeclared  
Cincinnati, OH  
"The man in the cage seems to say that not only is he physically trapped, but also mentally trapped. When we are in college and on campus, this is when we are suppose to be most free. So no, I don't think it should be there."



Ronnie Paolelbo

Undeclared  
Guilford, IN  
"Yes, it has a lot of messages."

Crystal Bogenschultz

Undeclared  
Florence, KY  
"Yes, there are strong messages and meanings in the sculpture."



Amy Bankemper

Accounting  
Southgate, KY  
"Yes, because I do not think this sculpture would cause a controversy like the *Grooms* sculpture did."

Mandy Huck

Information Systems  
California, KY  
"Yes, it will give the campus some life."



Matthew Heck

Accounting  
Wyoming, OH  
"Yes, it represents human life and would help make the campus look better."

### THE NORTHERNER

Editor In Chief: Stef Sanderson  
Executive Editor: Anna Weaver  
Managing Editor: Kelly Sudzina  
General Manager: Stef Sanderson  
Business Manager: Anna Weaver  
Production Manager: Margie Wise  
News Editor: Forrest Berkshire  
Features Editors: Kelly Carson & Chad Aulick  
Sports Editor: Elden May  
Assistant Sports Editor: Bruce Reller  
Photo Editor: Erin Varnfield  
Copy Editors: Jay Berry & Tony Casnellie  
Online Editor: Justin Rains  
Editorial Cartoonist: Steve Durm  
Distribution Manager: Dan Cooley  
Sports Photographer: Jeff McCurry  
Staff Writers/Photographers: Rick Amburgey, Timothy Banks, Melissa Bradley, Justin Braxton-Brown, Cindi Brown, Michelle Brug, Shelley Conrad, Max Dawson, Jimmy Ferguson, Jeff Gardiner, Jennifer Haines, Christina Halpin, Mary Mebs, Vicki Pappas, James Proffitt, Chris Schaeffer, Jon Secrist, Jennifer Swope, Michele Tomlinson, Amy Westerling, Jeffery B. Williams  
Faculty Advisor: Pat Moynahan

### THE NORTHERNER

University Center Suite 209  
Highland Heights, KY 41099  
Office: (606) 572-5260  
Business Office: 572-5232  
Editor in Chief: 572-6128  
Fax: 572-5772  
E-mail: northerner@nku.edu

The *Northerner* is a member of the Associated Collegiate Press and the Kentucky Intercollegiate Press Association. Publication is weekly on Wednesdays excluding university observed holidays and final examination weeks.

### EDITORIAL POLICY

The *Northerner* welcomes all letters to the editor and editorials. We request that they be less than 600 words, typed and sent preferably via e-mail to northerner@nku.edu. The *Northerner* reserves the right to refuse any letter to the editor or editorial and to change spelling and grammatical errors.

Wednesday, March 3, 1999

THE NORTHERNER

## Diaspora Festivities



Steve Adams, president of Black United Students, and professor of history and geography Dr. Michael Washington exchange a handshake at the Diaspora Festival.

Michelle Brug  
Staff Reporter

The first African Diaspora Festival was held at Northern Kentucky University Feb. 19 in the University Center's TV lounge.

Inspired by Black History Month, the festival aimed to share African culture as well as to encourage people to open their eyes to all forms of culture.

The festival honors family, spirituality and ethnic background. It's about triumphs, turmoil and tribulations.

Steven Adams, president of the

Black United Students, hopes the festival "will promote diversity among NKU's student population" and plans on working toward promoting more culturally diverse activities in the future.

Dr. Michael Washington commented, "It's an opening of consciousness, and emergence of international cooperation and struggle."

The festival featured a gospel choir singing the Black National Anthem and a duet with Lillian Olenbo and Angel Chichester singing the African National Anthem.

"The music we sing is a celebration of history in all cultures and of love

that is meant to inspire everyone," Anita McMullen said. "It's the first step to bringing everyone together."

Foods such as kiliwili, jollof rice and Cuban style black beans were served as the crowd was entertained by a modern African dance performed by Olenbo.

Powerful works of poetry were read by Regina Ford-Fowler titled "Easter", "Black Girls", and "Death of Affirmative Action" showed grace and vigor, as did her recitation of Dianne Ford's "Desires of a Woman".

Mmakgari Dabutha also offered personal works of poetry showing the importance of strong will and faith.

### Jollof Rice (West Africa)

This recipe comes from Senegal where it is the national dish of the Wolof people.

Serves 6-8 people

2 cups white rice	5 tbsp butter
1/2 quart water	Black pepper to taste
1/2 cup tomato puree	Salt to taste
1 large onion, sliced	2 large tomatoes, peeled and sliced
1 tsp cayenne pepper	1 lb. boned fried or stewed chicken, cut into pieces
1 tsp mixed herbs	
Sprig of thyme	

Add rice and water to saucepan and bring to boil. Turn down heat and simmer for 8 minutes. The rice will be partly cooked. Mix in the tomato puree, onions, cayenne pepper, mixed herbs, thyme, butter, pepper and salt. Continue to simmer until rice is almost cooked through. Add the tomato slices. When the rice is done, add the cooked chicken pieces and mix. Serve in a large bowl.

### Black Beans Cuban Style

Served with rice and cornbread, this dish is similar to Creole menus of the southern U.S.

2 cans (15 oz. each) black beans undrained	1 tsp cumin powder
1 medium onion	1/2 tsp oregano
1 green bell pepper	1/2 tsp salt
2 cloves of garlic	1 tsp red wine vinegar

Chop onion and green pepper. Mince garlic. Sauté all in a little bean liquid until soft. Add beans and remaining bean liquid. Add dry spices. Simmer 15-30 minutes. Add red wine vinegar just before serving. Serve warm.

## Looking for a job? Resume Expert Systems available

By Jeff C. Gardiner  
Staff Reporter

"Look Sharp. Get Hired." reads the purple and green cover of the Resume Expert Systems disk available at the Northern Kentucky University bookstore.

Resume Expert helps approximately 350 students per year begin their career search, said Marcia Miller, graduate employment coordinator for NKU's Career Development Center.

"I think this should be treated as a great supplement for job search," Miller said. "It does take a little bit of the burden off."

Graduating seniors should receive an invitation to a senior orientation seminar to explain how the program works, Miller said.

Once the disk is purchased at the bookstore, the next step is to complete the registration screen and create a resume.

The program was real user-oriented," said Robert Enzweiler, a 1997 NKU marketing graduate. "All I did was fill(ed) in the blanks."

The program has been successful in helping students achieve their career goals. According to an annual survey done by the Career Development Center, participants currently have an 87 percent job placement rate overall.

May 1997 graduates were 100 percent successful in their job searches. Average salary for December 1996 and May 1997 graduates was \$24,683, according to Miller, and is expected to rise.

Enzweiler believes that Resume Expert was a wise investment. "You can't put a price on the real world experience you gain in interviewing," Enzweiler said. "I thought this might be a stepping stone to my career."

## Looking to lose a job? Comedy 'Office Space' answers

By Michael Phillips  
Staff Reporter

Work Stinks! As experienced by three disgruntled employees, Peter Gibbons (Ron Livingston), Michael Bolton (David Herman), and Samir Naidu (in the cor

Peter is a co which requires h and stare at a co

Michael Bolton and Samir are at Initech. They have to walk a before they arri

building. They: 5 all week and have to come Saturday and S

As if this enough, their Bill Lumbergh (C Cole) is a wo less, slow-ta

loser trying to ge noted, but inst back fires on hin

Peter's stress es up with him a see an occupatio

To relieve the hypnotizes him, him calm and fre

This causes a wife and he be work.

So Peter mi he goes fishing

Lawrence (Die Bader) who is intelligent, but has a humorous attitude toward life.

Peter's love life has resurfaced with Joanna (Jennifer Aniston), a waitress who has had enough of her job as well.

Meanwhile, back at Initech, the consultants are looking to downsize the company and the four people to go are Peter, Michael, Samir and Tom.

must interview each if they are incor- continue their job. be interviewed.

sed in street clothes, about his job. ens to go his way is promoted to exec- boss of the compa-

his may be his big i, but he is losing of his friends in the cess.

So the three men, Michael and i devise a plan to nload a bug into the system to allow

fraction of the (erest be filtered to a separate count.

They sneak around this bug and find ave stolen a large noney.

Space provides us exceptional charac- outlined by Ron Livingston and snifer Aniston to s realize that work

.. but trying to do something wrong can hurt yourself.

Office Space receives 3 1/2 candy bars.



Restaurant

## In Italian, the word is "denaro."

You're going to love what's cooking at The Olive Garden. Full and part-time jobs with an Italian flair. Right now we have opportunities for:

### ALL POSITIONS AVAILABLE!

We offer excellent benefits, including insurance that starts on your very first day and flexible scheduling. Please apply anytime at the restaurant nearest you.

7179 Dixie Highway, Fairfield  
513-874-7393  
9654 Colerain Avenue, Cincinnati  
513-385-6300  
475 Ohio Pike, Cincinnati  
513-528-1075  
4900 Fields Ertel Road, Cincinnati  
513-677-5922  
7844 Mall Road, Florence  
606-282-1116

*The Olive Garden*  
ITALIAN RESTAURANT

We are an equal opportunity employer.



## IT'S 11:59 ON NEW YEARS EVE. DO YOU KNOW WHERE YOUR DATE IS?



200  
cigarettes



STARTS FRIDAY, FEBRUARY 26TH!

SHOWCASE CINEMAS CINCINNATI 351-2232  
SHOWCASE CINEMAS SPRINGDALE 874-8888  
275 EAST CINCINNATI 834-3300  
FLORENCE CINEMAS 826-8400  
SHOWCASE CINEMAS WESTERN HILLS 874-7777

Enter the "200 Cigarettes" Date of the Century Sweepstakes at [www.excite.com/200](http://www.excite.com/200). No purchase necessary. For full rules and to enter the contest by mail, send your name, address and phone number on a 3" x 5" card to: Date of the Century Sweepstakes, P.O. Box 510, Birmingham, AL 35201. Entries must be postmarked by 2/27/99.



# Return to the '80s with 'Cigarettes'

By Michelle Brug  
Staff Reporter

It's 11:59 p.m. on New Year's Eve. Do you know where your date is? Maybe with the person you least expect.

Paramount Pictures and MTV films bring you this hilarious twist of fate in *200 Cigarettes*, a New Year's Eve comedy set in New York's East Village circa 1981.

*200 Cigarettes* stars some of today's most promising young actors, including Ben Affleck, Casey Affleck, Dave Chapelle, Janeane Garofalo, Gaby Hoffman, Courtney Love, Jay Mohr, Martha Plimpton, Christina Ricci and Paul Rudd.

The movie begins with Monica (Plimpton) throwing a New Year's Eve party, but being deathly afraid that no one will show up.

It's a miracle that anyone does

considering the chain reaction of breakups, hookups and mess-ups that each character goes through in getting there.

At the end of the night, nothing turned out the way they thought and there is only one thing that is obvious; it gets radically bizarre in light of the morning after!

This is unmistakably the funniest movie I have seen in a long time.

It's packed with hysterical one liners that will leave you craving more.

The personalities of the characters are so realistic that they will describe some of the people you know, only real-world style. Remember watch-rings, neon colors, mall hair and music from The Ramones?

Aimed for the college crowd, *200 Cigarettes* is like reliving all of the fads and culture people experienced in the early 80s.



Dave Chapelle stars as Disco Cab Driver and Angie Featherstone stars as Caitlyn in *200 Cigarettes*.

Photo Contributed

## 'Simply' resistible

By Michael Phillips  
Staff Reporter

"Magical Realism."

Those two words can sum up the film *Simply Irresistible*. And it is brought out in the character of Amanda (Sarah Michelle Gellar) but, not right away.

When we meet Amanda Shelton, she is an inept cook in a failing restaurant which she has inherited from her more talented mother.

Amanda goes to the local market to pick up some groceries for her restaurant and runs into a magical angel (Christopher Durang) who sells her a basket of crabs, which leads to a chain reaction of special occurrences with her restaurant and love life.

One crab is still alive and escapes down through the market. Amanda chases it, which leads her to a handsome smart uptown restaurant creator, Tom Bartlet (Sean Patrick Flanery). Boom. Right there you can see the two are meant for each other.

The following day, Tom and his girlfriend enter the restaurant looking to eat some of Amanda's food. Her palms are sweaty; she's nervous,

can't concentrate and doesn't know what to do.

She grabs the basket of crabs and lets her feelings do all the work and poof, a masterpiece has been created. Tom can't stop eating this delicious meal; he feels all good and mushy inside. Suddenly, the restaurant is filled with customers, old and new. The restaurant is prospering.

Throughout the movie, Amanda and Tom mysteriously keep running into each other.

Their feelings for each other have hit a high, going along with Amanda's cooking attracting Tom to her.

However, Tom tries to resist his feelings toward Amanda.

"As Gellar enters the movie business with her looks and acting ability, she is truly Simply Irresistible."

--Michael Phillips

for tonight, but Tom thinks she has magical powers and has cursed him. He is afraid that she will ruin the night with her powers, but the results are totally opposite.

As Gellar enters the movie business with her looks and acting ability she is truly *Simply Irresistible*.

The movie receives 2 1/2 candy bars.

## 'Enjoy the Arts' of Cincinnati Receive discounts to museums, symphonies and theatres

By Jeff C. Gardiner  
Staff Reporter

Are you burned out on school? Are you virtually penniless? Have you taken your better half to any "cultural" events lately?

Enjoy the Arts/ START may be the answer to at least some of your problems.

Enjoy the Arts (ETA/ START) has been offering discounted and free tickets to area arts organizations since its inception in 1980.

ETA/ START is open to full-time students of any age as well as non-students 30 years of age and younger.

Lisa Wienckowski, outreach coordinator for ETA/ START, said that in the past, arts organizations and fund raisers had been focusing their attention on older generations.

"Now, however, arts organizations have come to the important realization that young people are the future," said Wienckowski. "As a result, the student membership is the perfect way for students to sample the various modes of artistic expression."

Enrollment in ETA/ START allows students to receive two free tickets to organizations such

as the Cincinnati Art Museum, the Contemporary Arts Center and Cincinnati's Playhouse in the Park, as well as discount tickets to other area arts organizations.

One-year memberships to ETA are available to full-time students of any age for \$25.

START is open to non-students age 30 or younger for an annual fee of \$30.

Peter Robinson, director of public relations for Playhouse in the Park, hopes to see people at

the Playhouse as a result of ETA/ START.

"It's a pioneering program," said Robinson. "ETA/ START allows us to expand our present audience and expand our future audience."

Robinson said he believes time and financial constraints keep young people from being able to sample the arts.

Wienckowski said ETA also offers scholarship memberships to several "underserved" groups,

such as the Cincinnati Public School system, the Children's Hospital and various orphanages, group homes and treatment facilities.

ETA/ START services 29 social organizations, 54 primary and secondary schools and 17 colleges including Northern Kentucky University.

Madeline Goedde, a senior theater major, heard about ETA through a dance instructor.

"We had to see a professional dance show and critique it as an assignment," Goedde said.

"We were discussing how unaffordable show tickets are, even with student discounts, and that's when they (fellow classmates) agreed that being an ETA member really pays off."

Wienckowski said she believes that students often picture the arts as inaccessible.

"I think our membership often seems too good to be true," Wienckowski said. "The funny thing is, there's no catch."

ETA/ START can be reached by calling 621-4700.

## Features Quote of the Week:

"If you can't annoy somebody with what you write, I think there's little point in writing."

• Kingsley Amis  
British novelist  
1971

## Campus Calendar

### Thursday, March 4:

- Concert by Folk singer David Rovics. Sponsored by Anthropology Association. 7 p.m. Greaves Auditorium.
- Phi Beta Lambda meeting. 3:15 p.m. UC 303.
- Students Together Against Racism. 7:30 p.m. Norse Commons Room 117.
- Women in Transition support group meeting. 12:15-1:30 p.m. UC 232.

### Monday, March 8:

- NKU Choral Invitational Festival. Randy Pennington, coordinator. 8 p.m. Greaves Concert Hall.
- Les causeries du lundi. French conversation hour. 2 p.m. Landrum 531.

### Tuesday, March 9:

- Quilting Women's Lives Together. 6-9 p.m. UC 232.
- Women's Literature Night. 9 p.m. Norse Commons 117.
- Common Ground meeting. 4-5 p.m. UC 303.
- Deutsche Kaffeestunde. German conversation hour. 1:30 p.m. Landrum 531.

### Wednesday, March 10:

- Training: Responding to Ethnic Intimidation. Trainer, Steve Arnold. 7-9 p.m. Norse Commons 117. Call 572-6047 to register.
- Hora de conversacion. Spanish conversation hour. 2 p.m. Landrum 531.
- AA meeting. 11 a.m.-12 p.m. UC 232.

### Thursday, March 11:

- NKU Symphonic Winds. Carol Dary Dunevant, conductor. 8 p.m. Greaves Concert Hall.

## ALCOHOL

It's caused more dropouts than organic chemistry, prelaw, and calculus combined.

Many academic problems are alcohol-related. If you would like free information about alcohol abuse, please call the NorthKey Regional Prevention Center at 283-0952. We are dedicated to drug abuse education and prevention in Northern Kentucky.



## GET MONEY FROM YOUR UNCLE INSTEAD.

Your Uncle Sam. Every year Army ROTC awards scholarships to hundreds of talented students. If you qualify, these merit-based scholarships can help you pay tuition and educational



fees. They even pay a flat rate for textbooks and supplies. You can also receive an allowance of up to \$1800 each school year the scholarship is in effect. Find out today if you qualify.

**ARMY ROTC**  
THE SMARTEST COLLEGE COURSE YOU CAN TAKE

For details, contact Xavier U. Army ROTC at:  
(513) 745-1062

## 5 SUPERVISORS & 50 CALL CENTER REPS

### Set your own schedule

Looking for a great full or part-time job? DMR is looking for 50 people with pleasant friendly phone voices, who want to work in the exciting world of broadcast promotions.

### No sales or appointment settings involved.

No experience is required & we offer flexible hours.

We have 3 shifts available. Start right away!

Call Richard or Chaz right now for your initial phone interview at 665-3104 x 121 or x128 or apply in person Monday through Friday between 1:00 & 6:00 at the Holiday Office Park. 644 Linn Street, 9th Floor EOE

**DMR**  
DIRECT MARKETING RESULTS

*The Marketing Edge of the 90's*

Wednesday, March 3, 1999

THE NORTHERNER

Back to the drawing board:

## NKU earns NCAA berth the hard way



Elden May

When the masses gathered Sunday in Landrum Hall for the NCAA Division II women's tournament selection show, things were far from normal.

Although a large crowd turned out to watch the show, a satellite error made the show unavailable on television.

NKU fans learned of the team's fate when Athletic Director Jane Meier sketched the brackets on a chalkboard.

To most schools, this would seem like an unorthodox way to get in the tournament.

For the Norse, the events of this evening were normal compared to the rocky road through the GLVC tournament last week.

The Norse entered the tournament without senior center Shannon Smith. Smith, recently nominated to the GTE Regional All-Academic team, is the team's second-leading scorer.

The Norse had to rely on contributions from younger stars and veteran role players. Those players had to mature quickly and a new hero emerged nearly every night.

Against Kentucky Wesleyan Wednesday night, NKU held a seven point lead at halftime. The clutch performer for the Norse this night was Jessica Jensen, who scored 16 points and helped NKU to a 97-71 blowout win.

On Friday, NKU pulled the rare trifecta against Southern Indiana. After beating the Screaming Eagles twice in the regular season, the Norse tried to put USI out of the GLVC tournament.

After USI took an eight point lead to the locker room, NKU was forced to play with its back to the wall.

This time, Michele Tuchfarber saved the day. The NCAA leader in three-point accuracy drained a three to pull NKU within a point and turned the game's momentum for good.

In the game's final minutes, little-used center Kris Kamrath was fouled with NKU up 65-64. She calmly hit the two free throws that sealed the game.

"She'll remember this for the rest of her life," NKU coach Nancy Winstel said of Kamrath's heroics. So should her teammates.

On Saturday, the Norse battled Bellarmine in the GLVC tournament finals. NKU trailed by one with 40 seconds left. After a defensive stop, the ball found its way into Tuchfarber's hands one more time.

The unsung hero calmly hit another three, this time to give NKU the GLVC championship and the top seed in the NCAA regionals.

Of all the shots made by NKU this season, Tuchfarber's was by far the biggest. Had she missed, we would be talking about the long trip to Houghton, Michigan for the NCAA tournament.

Instead, the Norse will host the NCAA regional and will have a first-round bye as the top team in the region.

The season came down to one shot in the closing seconds of a game. If the Norse is a well-oiled machine, Tuchfarber is its clutch.

Winstel said the Norse have a home court advantage on paper.

"It's nice to stay home, as long as we have people that come and fill the seats," Winstel said.

The team has done its part to win our hearts. Now, if only the team can play before a sellout crowd at Regents Hall for a trip to the Elite Eight.

## Norse finish season at 16-12 after a win, loss at GLVC tourney

By Elden May  
Sports Editor

The Northern Kentucky University men's basketball team headed into the Great Lakes Valley Conference tournament needing to win the tournament to assure itself a spot in the NCAA tournament for a fifth consecutive season.

The Norse defeated the Indianapolis Greyhounds in the first round and then had its season ended by the Kentucky Wesleyan Panthers in the semifinals of the tournament.

NKU played the second game of the afternoon in Roberts Stadium in Evansville against the Greyhounds.

Both teams battled cold shooting throughout the game, but NKU found its stroke late and defeated the Greyhounds, 60-48.

NKU shot 36 percent from the floor in the first half, while Indianapolis shot 31 percent. The three-point shooting was even worse, as the two teams combined to shoot 4-23 from behind the arc.

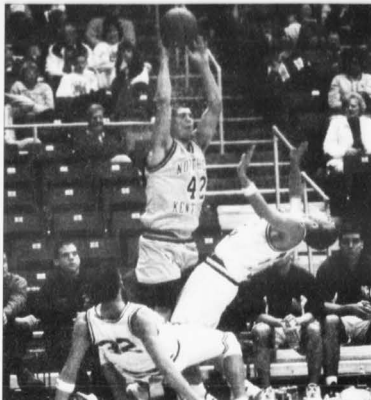
The game was close throughout the first half; neither team held a lead larger than five points. NKU led 21-16 midway through the first half before Indianapolis finished the half on a 10-5 run.

Adam Norwell led NKU with eight first-half points. Andy Foster led Indianapolis with nine points.

In the second half, NKU shut down Foster, who missed all nine shots from the field in the second half and finished 4-13 for the game.

After the Greyhounds took a 42-35 lead, the momentum turned on an intentional foul.

As Craig Conley went downcourt



Jeff McCutty/The Northern

**TWO DOWN, BALL TO GO:** NKU forward Adam Norwell knocks down Kentucky Wesleyan players Adam Mattingly and Patrick Critchelow during the 111-70 NKU loss in the Great Lakes Valley Conference Tournament.

for an apparent layup, he was fouled by Chad Peckinpough. Conley hit the free throws, which ignited a 25-6 NKU run to end the game.

The Norse shot 46 percent in the second half, holding UI to 27 percent. NKU coach Ken Shields said the win was important for NKU.

"That was a really great win against Indianapolis. We needed a big win

and we got one," Shields said.

With the win, NKU advanced to the semifinals on Friday night against Kentucky Wesleyan. The Panthers fought to an early stalemate, then torped the Norse for a 111-70 victory.

Wesleyan opened the game with an 8-0 run. The Panthers extended the lead to eight at 15-7 before the Norse made their comeback.

Three-pointers by Craig Sanders and Brian Lawhon ignited a 13-4 run which gave the Norse a 20-19 lead. It was the only lead of the night for NKU.

Wesleyan took control of the game by outscoring NKU 36-20 for the rest of the half. KWC had balanced scoring as guards Chris Haskin, Adam Mattingly and Patrick Critchelow combined for 38 first-half points.

The KWC defense forced NKU into 12 first-half turnovers. Wesleyan also outscored NKU 15-10.

Things got worse in the second half for NKU; Wesleyan began the final period with a 10-3 run to extend the lead to 65-43.

Wesleyan put NKU away when they outscored NKU 17-3 over the next eight minutes of play.

Gino Bartolone brought the Wesleyan following to its feet by hitting three consecutive three-pointers.

The exclamation point for KWC came when Leroy John threw down a reverse jam on an alley-oop pass from Antonio Garcia to give Wesleyan a 40 point lead at 93-53.

KWC shot 63 percent from the field for the game while holding NKU to 45 percent.

KWC forced NKU into 23 turnovers, while only committing eight.

Shields said NKU lost against a better team.

"We just got beat by a team that was vastly superior, experienced and talented in Wesleyan," Shields said. "They are playing really well right now."

Junior Mitch Perdris said he was stunned at the game's outcome.

"I'm really at a loss for words,"

Perdris said. "I just feel bad for Mike and Chuck that they had to go out like this."

Freshman Drew Beckett said much of the credit goes to the KWC defense. "Their pressure really hurt us," Beckett said. "They were on, and I don't see many teams beating them when they're on."

The Norse finished the season at 16-12. Shields said even though the Norse did not make the NCAA tournament, the season was still a success.

"To think we had three freshmen and a sophomore averaging in double figures," Shields said, "it was a solid year."

**KWC (111):** Williams 9-14 5-5 25, Mattingly 7-8 0-0 16, Garcia 2-5 2-2 6, Haskin 5-9 1-1 12, Critchelow 6-9 2-4 15, Perry 2-3 0-0 4, Bartolone 5-8 1-2 15, Witt 2-2 0-0 4, McDonald 0-1 0-0 0, Powell 1-1 0-0 2, John 4-8 4-5 12. **Totals** 43-68 15-20 111.

**NKU (70):** Lawhon 1-5 0-0 3, Sanders 5-14 0-0 14, Norwell 3-4 1-2 7, Conley 5-8 3-5 14, Perdris 2-3 0-0 4, Seiter 2-3 0-0 4, Schaefer 4-7 0-0 10, Nixon 2-4 0-0 5, Bays 1-3 2-5, Beckett 1-4 0-0 2, Vieth 0-2 0-0 0. **Totals** 26-57 6-9 70.

**Half:** KWC 55-40, 3PLFG-KWC 10-25 (Williams 2-4, Mattingly 2-3, Garcia 0-2, Haskin 1-4, Critchelow 1-3, Bartolone 4-7, McDonald 0-1, John 0-1); NKU 12-26 (Lawson 1-5, Sanders 4-9, Conley 1-2, Perdris 0-1, Seiter 2-3, Schaefer 2-3, Nixon 1-1, Bays 1-1).

**Rebounds:** KWC 37 (Williams 7, Garcia, John 6); NKU 25 (Conley 7, Assist-KWC 28 (Critchelow 6); NKU 16 (Conley 6).

**Turnovers:** KWC 8 (Perry, Williams 2); NKU 23 (Conley 6).

**Attendance:** 3,750.

## 1999 NCAA Women's Tournament Bracket Great Lakes Region (at Regents Hall, Northern Kentucky University)

Michigan Tech	Mar. 5, 5:30 p.m.	
SIU-Edwardsville	Mar. 4, 5:30 p.m.	
Northern Michigan	Sat., Mar. 6, 7:45 p.m.	Regional Champion
Grand Valley State	Mar. 4, 7:45 p.m.	
Bellarmine College	Mar. 5, 7:45 p.m.	
NKU		



He must've  
tried our  
Blazin' wings.

The hottest spot in town for hot wings  
and the hottest sports action! We dare  
you to try our Blazin' wings!

Award-Winning Buffalo Wings  
12 Signature Sauces  
Full Menu  
Daily Happy Hour  
Big Screens & a Multitude of TVs  
Free NTN Interactive Trivia  
25¢ Wings on Tuesdays  
Call for Carryout



42 M.L. Collins • Cold Spring • Call for Carryout • 781-9464

## Three ways to beat the high cost of college.

1. The Montgomery GI Bill
2. Student loan repayment
3. Part-time income

The Army Reserve Alternate Training Program is a smart way to pay for college.

First, if you qualify, the Montgomery GI Bill can provide you with over \$7,000 for current college expenses or approved w/tech training.

Second, if you have—or obtain—a qualified student loan not in default, you may get it paid off at the rate of 15% per year or \$1,500, whichever is greater, up to a maximum of \$10,000. Selected military skills can double that maximum.

Third, you can earn part-time money in college, and here's how it works: One summer you take Basic Training, and the next summer you receive skill training at an Army school. You'll earn over \$1,600 for Basic and even more for skill training. Then you'll attend monthly meetings at an Army Reserve unit near your college, usually one weekend a month plus two weeks a year. You'll be paid over \$107 a weekend to start. It's worth thinking about. Give us a call:

606-291-6743

BE ALL YOU CAN BE.

ARMY RESERVE

www.goarmy.com

# CHAMPIONS: Norse win GLVC tournament, host NCAA regional

From Page 1

The game was close throughout the half, as NKU led by a point at 34-33 just over a minute left. USI closed the half on a 9-0 to lead 42-34 at the break. Five of those points came on a rare five-point play. As Jennifer Donner hit a three-pointer, NKU fouled Mindy Gingerich. Gingerich then hit both free throws.

Gingerich led the way for USI with 14 points at the break. Michele Tuchfarber had 11 points for NKU. The team overcame the loss of Shannon Smith and claimed the victory in the final minutes. This was not lost on NKU coach Nancy Winstel.

"There are two ways you can go," Winstel said. "You can go up or you can go down. Our team has refused to let itself go down."

After USI went up by 10 at 44-34, NKU began its comeback. Cottrell and Tuchfarber outscored USI 7-0 over the next 1:30. The momentum changed for good with 4-17 left on a three-pointer by Tuchfarber. During the scramble for the loose ball, the ball rolled to a wide-open Tuchfarber, who then drained the trifecta. Winstel said the three changed the entire game.

"That really got us going. It put us within one and then we go down and get the stop," Winstel said.

The Norse regained the lead for good with 1:13 left on a Cottrell put-back. Kris Kamrath sealed the victory for NKU as she hit two free throws to give NKU a 67-64 lead. Winstel said the free throws by Kamrath were a gift from up above.

"I didn't really say anything to Kris," Winstel said. "But God and I had a little conversation. She

deserved to hit those free throws more than anyone on the team. She'll always remember that."

Cottrell led the way for NKU with 24 points and 12 rebounds and Tuchfarber finished with 23 points and eight rebounds for the Norse. Cottrell said she tried to do anything for the team.

"I hit a couple free throws and grabbed some rebounds," Cottrell said. "I was doing whatever it takes to win."

Southern Indiana was led by Gingerich with 23 points. Casey Hughes added 13 points for the Screaming Eagles. Winstel said that defense decided the outcome of the game.

"Our defense won the game," said Winstel. "We came out and rebounded and kept them off the boards."

Southern Indiana coach Chancellor Dugan complimented on the NKU squad.

"They are a very outstanding team," said Dugan. "I hope they go to the Elite Eight. I hope they win it all."

NKU extended its winning streak to 18 games and continued its quest for the GLVC Conference title as it took on Bellarmine Saturday for the championship. NKU got off to a fast start in the first half as a result of a 10-4 run. Cottrell had three points and Tuchfarber had a three-pointer during the run.

Bellarmine came back on a 6-2 run as Rachel Beasley had all six points during the run including a three-pointer to cut the Norse lead to 12-10. The game remained close the rest of the half until the last few minutes, when NKU led 28-25. Bellarmine would go on a 8-0 run just before the break as



**A TIGHT SQUEEZE:** NKU guard Katie Kelsey drives between Southern Indiana players Adrienne Seitz and Natalie Glaser during the 68-64 NKU victory in the Great Lakes Valley Conference tournament in Evansville.

Beasley hit two free throws and Ryan Danner hit two three-pointers as Bellarmine took a 33-31 lead to the locker room.

The Norse were led by Tuchfarber with nine points at the break. Bellarmine had three players with nine points at the break: Danner, Beasley and Stephanie

Hutchcraft. Both teams kept the game close in the second half, as each had slim leads throughout the half. NKU held an early 38-35 lead in the half as Cottrell had five points during a 7-2 Norse run.

Bellarmine came back, however, on a 5-0 run as Beasley hit a

three-pointer and a layup to give the Knights a 40-38 lead. From that point, neither team had a bigger lead than three points until the last few minutes of the game, when Cottrell hit back-to-back layups to give NKU a 61-56 lead. Tuchfarber then contributed two free throws to give the Norse a 67-62 lead.

Late in the game, Bellarmine put together a 5-0 run to tie the game at 67 as Beasley hit a three-pointer and Betsy Young had a layup for the Knights. With less than two minutes left in the game, Young made a three-pointer to give Bellarmine a 70-69 lead. With under 30 seconds left and Bellarmine up 72-71, the Norse went down the court and Tuchfarber nailed a three-pointer with eight seconds left.

NKU would hold on from there to win the GLVC tournament, 74-72. Cottrell, named the tournament's Most Valuable Player, led the way for the Norse with 30 points. Tuchfarber, who was named to the GLVC All-Tournament team, came away with 19 points for NKU. Danner had 23 points and Hutchcraft scored 13 points for the Knights. Tuchfarber talked about hitting the game-winning shot to win the championship.

"I was saying 'Go in,'" said Tuchfarber. "Time was winding down and I just had a good look." She said being named to the All-Tournament team was also a great feeling.

"It was an honor," she said. "It was a tribute to the team," she said.

NKU fought through injuries and controversy all season and were able to win the GLVC tour-

nament in only its second season in the league. As it gets ready for the NCAA Division II tournament, NKU hopes to continue its winning ways.

"When Shannon Smith comes back, we'll be hard to stop," said Tuchfarber.

**NKU (68):** Stanley 0-4 0-0 0, Cottrell 7-9 10-12 24, Jensen 1-5 2-2 5, Tuchfarber 8-14 6-6 23, Kelsey 3-7 1-2 7, Su, Smith 0-1 0-0 0, Roddy 1-5 2-2 5, Kamrath 1-2 2-2 4. **Totals** 21-47 23-26 68.

**Southern Indiana (64):** Donner 2-4 3-9, Gingerich 7-13 9-9 23, DeShazer 2-9 3-4 7, Hughes 5-18 2-7 13, Seitz 3-5 0-6, Proven 0-1 0-0 0, Glaser 2-6 2-2 6, Mercer 0-1 0-0 0, Tepost 0-1 0-0 0. **Totals** 21-58 19-25 64.

**Half:** USI 42-34, 3PFG: NKU 3-11 (Stanley 0-1, Jensen 0-1, Tuchfarber 1-1, Kelsey 0-2, Su, Smith 0-1, Roddy 1-5); USI 3-10 (Donner 2-5, Gingerich 0-1, Hughes 1-5, Seitz 0-1). **Rebounds:** NKU 40 (Cottrell 12, USI 26 (DeShazer 5)). **Assists:** NKU 0 (Tuchfarber 3); USI 5 (Seitz 3). **Turnovers:** NKU 19 (Kelsey, Cottrell 4); USI 12 (DeShazer 5).

**Attendance:** 821.

**NKU (74):** Tuchfarber 7-16 3-3 19, Cottrell 12-22 6-9 30, Jensen 5-8 2-3 12, Stanley 2-7 0-0 4, Kelsey 1-3 2-2 5, Su, Smith 0-0 0-0 0, Roddy 1-4 2-2 4, Kamrath 0-0 0-0 0, McRae 0-0 0-0 0. **Totals** 28-60 15-19 74.

**Bellarmine (72):** Conner 5-14 2-2 12, Hutchcraft 5-13 2-2 13, Gonzalez 1-1 0-0 2, Young 2-7 5-6 10, Danner 4-7 0-0 12, Beasley 6-9 4-5 19, Taylor 0-0 0-0 0, Holland 1-4 2-2 4. **Totals** 24-55 15-17 72.

**Half:** Bellarmine, 33-31, 3PFG: NKU 3-12 (Tuchfarber 2-5, Stanley 0-5, Kelsey 1-1, Roddy 0-1); Bellarmine 0-5 (Conner 0-1, Hutchcraft 1-4, Young 1-5, Danner 4-4, Beasley 3-3, Holland 0-0). **Rebounds:** NKU 28 (Cottrell 7); Bellarmine 37 (Hutchcraft 7); **Assists:** NKU 21 (Stanley 7); Bellarmine 17 (Conner 7). **Turnovers:** NKU 6 (six players with 1); Bellarmine 11 (Conner 3). **Attendance:** 830.

## The Northerner Players of the Week

Photos by Jeff McCurry

**Left: Craig Sanders**  
Sanders scored 18 points in the NKU win over Indianapolis and scored 14 in a losing effort against Kentucky Wesleyan in the GLVC tournament.

**Right: Michele Tuchfarber**  
Tuchfarber helped NKU win the GLVC tournament with two clutch three pointers. Her three-pointer against USI changed the momentum and completed the NKU comeback. On Saturday, her three with eight seconds left gave NKU a 74-72 victory.



No. 30496

\$3500.00

JACK TODD MILLS  
54 WALDEN ROAD

Treasurer  
of the United States  
ARMY ROTC SCHOLARSHIP



## CASH IN ON GOOD GRADES.

If you're a freshman or sophomore with good grades, apply now for a three-year or two-year scholarship from Army ROTC. Army ROTC scholarships pay

tuition, most books and fees, plus \$150 per school month. They also pay off with leadership experience and officer credentials impressive to future employers.



**ARMY ROTC**

THE SMARTEST COLLEGE COURSE YOU CAN TAKE

For details, contact Xavier U. Army ROTC at:  
(513) 745-1062

## Bellarmine basketball's biggest fan

The following story was uncovered during the Great Lakes Valley Conference tournament in Evansville last week.

**By Bruce Reller**  
Assistant Sports Editor

To basketball fans, an exciting game can be just what the doctor ordered.

For Richard Meeks, he takes this saying literally.

Meeks is widely known as Bellarmine College's "biggest fan."

However, it is not all fun and games with Meeks.

Meeks suffers from bouts of depression and his doctor suggested he find a hobby to help him relax. So Meeks adopted the Bellarmine College basketball team.

He has followed the men's and women's teams for 10 years. He attends every home game and sometimes finds a way to attend road games as well.

Meeks was in Evansville last week to cheer on the Lady

Knights, who reached the finals of the Great Lakes Valley Conference tournament.

Meeks has left such a mark on Bellarmine basketball that he was an invited guest of the school for the GLVC tournament.

Meeks has followed the Knights since finding out about Bellarmine basketball from the newspapers and from its players.

Before that, Meeks worked at the University of Louisville for seven years.

Meeks has a unique perspective of the teams this season at Bellarmine.

"The men have a better team than the record indicates," said Meeks. "Coach Charlie (Just) has to adjust to the transition from women to men's team. Also, the women are not playing well as they are capable of playing, but they're winning."

Meeks also has a lot of respect for Division II basketball.

"Division I has all the cheating, but this is more fun," said Meeks. "The teams play their hearts out."

All this cheering for college teams has given Meeks the desire to become a student again.

He plans to enroll eventually at either at Spaulding or Bellarmine College in Louisville.

Meeks feels that academics should be more important than athletics.

"Bellarmine is an academic environment above athletics," said Meeks. "It has high standards and the acting president of the college is okay, too."

However, despite his outlook on academics, Meeks does enjoy the athletic contests he watches, especially the Bellarmine versus Northern Kentucky University matchups.

"We carried NKU right down to the wire," said Meeks, "I congratulated NKU, too."

Now that Bellarmine has qualified for the NCAA tournament, in all likelihood, Meeks will make the trip up I-71 to cheer on the Knights in Regents Hall.

Where could Meeks be found? Try his familiar spot—the front row.

### USA Today/WCBA Division II Women's Top 25 Poll

(Records are as of March 4)

TEAM	Points	Previous
1. North Dakota (24)	600	1
2. Francis Marion (SC)	573	2
3. St. Rose (NY)	550	3
4. Bentley (MA)	508	4
5. Emporia State (KS)	488	6
6. Michigan Tech	474	7
7. North Dakota State	429	8
8. Kennesaw St. (GA)	410	10
9. Nebraska Kearney	388	11
10. Northern Michigan	374	5
11. NORTHERN KENTUCKY	362	13
12. Missouri Western	347	9
13. UC-Davis	309	14
14. Rollins (FL)	307	15
15. Fort Valley State (GA)	281	16
16. Arkansas Tech	247	12
17. West Florida	203	18
18. Binghamton (NY)	169	19
19. Cal Poly Pomona	166	17
20. Delta State (MS)	133	22
21. Shippensburg (PA)	84	20
22. South Dakota State	78	21
23. Wingate (NC)	52	NR
24. Montana State-Billings	46	NR
25. Indiana (PA)	44	NR

## Upcoming Games

### NKU Women's Basketball

March 5

NCAA tournament  
vs. Bellarmine/GVSU winner  
7:45 at Regents Hall

### NKU Baseball

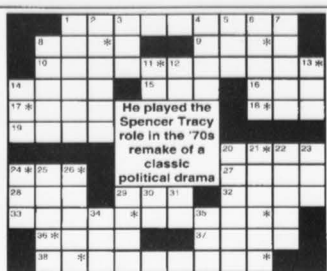
March 5 West Virginia St. 1:00  
March 6 Detroit 2:00  
March 7 Kentucky St. (DH) 1:00  
March 10 at Brescia (DH) 1:00

### NKU Softball

March 8 at Georgetown (DH) 5:00

Wednesday, March 3, 1999

## -TV-C-CHALLENGE



The identity of the featured celebrity is found within the answers in the puzzle. In order to take the TV Challenge, unscramble the letters noted with asterisks within the puzzle.

- ACROSS**
- Robert of Sports Night
  - Setting for Club
  - Dance: abbr.
  - Niles Crane, at times
  - Father in a classic '50s-'60s series (2)
  - Spenser: For ... (1985-88)
  - Role on Sister, Sister
  - Mad About You character
  - Ultimate degree
  - The Day the Bookies
  - '39 Betty Grable movie
  - Worry
  - From ... Z
  - Part of a 4.0 transcript
  - Patel ... Mary Martin role
  - Freebie: the Bean (1980-81)
  - V-W fore runners
  - Legal drama series (2)
  - Hot spot
  - Strange Shadows
  - Empty Room: '77
  - Martin Landau film
  - Across on The Hughleys (2)
- DOWN**
- Get ready (2)
  - Turnout
  - Letterman's state of birth: abbr.
  - Like the Love Boat
  - Merkel
  - On (1974-76)
  - Half of a movie critic team
  - Strong string
  - Cleely's initials
  - Jane Curtin's age
  - Cheerleader's cry
  - Lake near Reno
  - Ryan, for one
  - People Are Funny host and others
  - Mex. is location
  - Fallies (1987-89)
  - Factor: Chronicles of the Paranormal
  - Perpetual accessory for 10 Across

- Custom Features**
1. Get ready (2)
2. Turnout
3. Letterman's state of birth: abbr.
4. Like the Love Boat
5. Merkel

## HOROSCOPE

By C.C. Clark - eTVData Features Syndicate

February 28 through March 6, 1999

- Aries (March 21 - April 20)**  
Take your responsibilities at home more seriously. Tackle a big project by taking it one step at a time. Excuses never get anything done.
- Taurus (April 21 - May 20)**  
Be honest but tactful when a friend asks for your advice. Listen to inspirational music when traveling long distances.
- Gemini (May 21 - June 20)**  
Learn to let go of your fears, and you will soon discover what it means to truly live. Take a class in a subject that excites you.
- Cancer (June 21 - July 20)**  
A loved one needs special handling, and you know exactly what to do. Giving comfort to others often makes us feel good about ourselves.
- Leo (July 21 - Aug. 21)**  
Work is too stressful for words, and you have to find a way to relax. Hang out with the gang and have some fun.
- Virgo (Aug. 22 - Sept. 22)**  
It is important to make new business contacts and network, even if you are happy at work. Share your optimism for the future with a loved one.
- Libra (Sept. 23 - Oct. 22)**  
Kindness is often something that must be taught. Treat others as you would wish to be treated, and the whole world will open up for you.
- Scorpio (Oct. 23 - Nov. 22)**  
Once you take the time to get organized, life will seem much easier. A weekend romance may begin to blossom into something more.
- Sagittarius (Nov. 23 - Dec. 20)**  
Roll up your sleeves and get to work. The time you've spent complaining could have been used more efficiently.
- Capricorn (Dec. 21 - Jan. 19)**  
It is never much fun when karma comes back to haunt you. Make sure you learn the lesson life is teaching you this time.
- Aquarius (Jan. 20 - Feb. 18)**  
Make a to-do list and stick with it for just one day. You will be amazed by everything you are able to accomplish.
- Pisces (Feb. 19 - March 20)**  
Remain calm when dealing with headbashed loved ones. They may be wrong, but screaming isn't the way to get through to them.

## Born this week:

- Feb. 28 - Charles Durning, Bernadette Peters, Terence Young  
March 1 - Harry Belafonte, Ben Howard, Alan Thicke  
March 2 - Jon Bon Jovi
- March 3 - Miranda Richardson  
March 4 - Chastity Bono, Paula Prentiss  
March 5 - Dean Cain, Ed McMahon  
March 6 - Tim Allen, Ed McMahon, Sherry O'Neil, Bob Roth

## "Spring Break"

Share expenses on 4nits, at either:  
All-inclusive w/Air;  
Jamaica \$930.00-\$1,150.00  
Cancun \$800.00  
Hotel only:  
Nassau \$320.00  
Panama City \$400.00  
Contact: Dave 391-7873

## ASSISTANT TEACHERS

Full or part-time for toddler preschool program.  
Competitive salary, EOE.  
Send cover letter and resume to  
Education Coordinator  
1607 Mansfield St.  
Cincinnati, OH 45210  
or call 621-3032

## Sportservice/Cinergy

Field is hiring for the following:  
Managers  
Accounting  
Human Resources  
Great pay, flexible hours, and a fun atmosphere.  
Please call Bridgette at 621-1555

POOL MANAGERS,  
LIFEGUARDS  
SWIM INSTRUCTORS,  
SWIM COACHES

Hiring now for summer positions.  
Excellent Pay, Work Outdoors!  
Call Cary at 513-777-1444

## EXTRA INCOME FOR '99

Earn \$500 - \$1000 weekly stuffing envelopes. For details - RUSH \$1.00 with SASE to:  
GROUP FIVE  
6547 N. Academy Blvd., Dept. N  
Colorado Springs, CO 80919

## The Northerner

would like to congratulate the following 1998/1999 Kentucky Intercollegiate Press Association winners:

## Deadline writing contest

Forrest Berkshire-Second place

## Deadline editing contest

Jay Berry-Second place

## Advertising copy

Chad Showalter-Second place

## Honorable Mention

Kelly Sudzina/Investigative reporting  
Judy Bonhaus/Investigative reporting  
Jimmy Ferguson/Investigative reporting  
Joseph Hargett/Investigative reporting  
Chad Showalter/Investigative reporting  
Chris Cole/Sports column

## CAMPUS CLIMATE

Wednesday

Thursday

Friday



High 48  
Low 36  
Mostly cloudy with showers likely. Chance of rain is 79 percent.

High 53  
Low 31  
Cloudy today and warmer. Chance of rain is 43 percent.

High 53  
Low 36  
Partly cloudy, much like yesterday. Chance of rain is 58 percent.

Saturday

Sunday



High 48  
Low 32  
Mostly cloudy today. Chance of rain is 53 percent.

High 41  
Low 28  
Mostly cloudy today. Chance of rain is 54 percent.

## Scurvy and Joe

By Steve Durm

