

# The Northerner

Volume 19, Number 10

Northern Kentucky University

Wednesday, October 25, 1989

## Hunger problem exists in Northern Kentucky

BARB BOLENDER  
NEWS EDITOR

"The Myths About Hunger in Northern Kentucky" is a 44-page report released at a news conference at NKU Monday, Oct. 16.

The study, released in conjunction with "World Food Day," is a joint Diocese of Covington/NKU report concerning the problems of hunger in Northern Kentucky.

Rev. Bishop William Hughes of the Diocese of Covington and Karen Weber, project coordinator addressed common myths about hunger.

We have a tendency to blame hunger on laziness, said Hughes. "The belief persists that poor are poor by choice, that anyone can escape poverty by hard work, and that welfare programs make it easier for people to avoid work.

"This punitive attitude blinds us to the simple fact: It is the system that has failed, not people."

The study originated with the hunger sub-committee of the Justice and Peace Commission. The social work students at

NKU devoted a semester to the project.

The 23 students conducted a total of 229 anonymous interviews at 11 different agencies providing food assistance. Of those interviewed:

- 55 percent need food assistance at least once a month.

- less than 4 percent were transient

- 51 percent lived in this area for over 10 years.

- 62 percent were members of households with children.

- 67 percent were female.

- 44 percent had someone in the household employed.

- 56 percent were unemployed, disabled or retired.

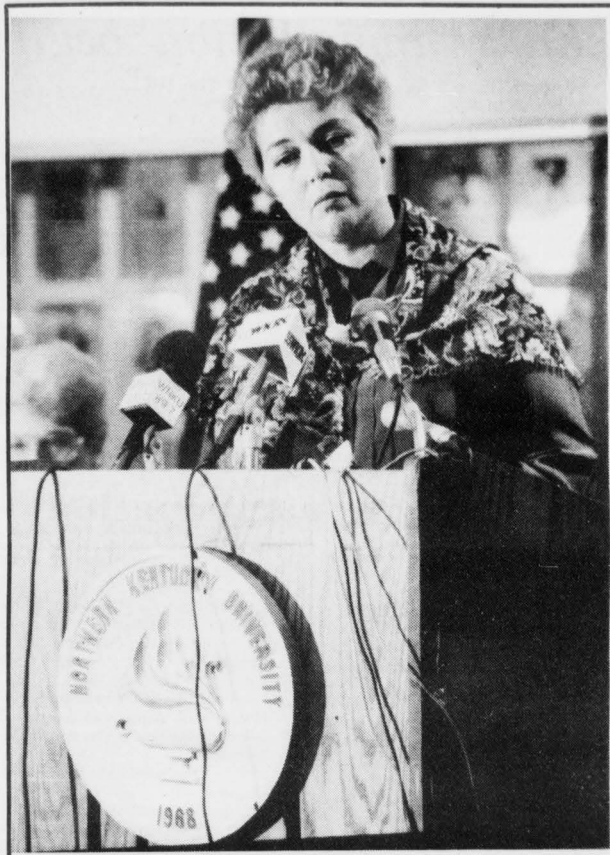
The group also researched federal assistance used by residents. They found that only 53 percent of the people receiving food assistance were getting food stamps. In the general population of the area, only 48 percent of people eligible are using food stamps.

"Changing the hunger situation in our area means changing the conditions which give rise to it," said Weber. "Specific measures can be implemented at each political level and together provide a unified approach to ending hunger in Northern Kentucky."

At the local level, Weber suggests that city officials concentrate efforts on protecting and expanding the low income stock of their respective cities.

At the state level, she endorsed expanding on Aid to Families with Dependent Children programs. At the federal level, she suggests raising the minimum wage and increasing federal spending on low-income housing from 1 percent to 3 percent.

Above all, Weber said, elected officials "must recognize the pervasive effects of poverty on the entire nation and realize the willingness of our citizens to use tax dollars to reverse the damage done to our country by leaving a large segment of our population in a state of hopelessness."



Ann Weber gives a report on the hungry in Northern Kentucky. Photo by Scott Rigney.

## Student Forum addresses campus issues here at NKU

MELISSA LAUER  
EDITOR

conclusion on this," Hollister said about the color issue.

But he still has some of his own questions:

Do the colors gold and white represent NKU well?

Will there be a color change again in 10 years?

What is the new image?

What is the university's (as a whole) emotions on the color change?

What do the colors mean?

Is the change worth this much of a dilemma?

Hollister said NKU is a non-traditional school, and the colors blue grass green

See FORUM page 3

Changing the school colors is just a small piece to the change for the better of the University's image, said University Relations Vice President Peter Hollister.

Hollister was among the four administrators who answered questions at the Student Forum held on Tuesday Oct. 17.

The forum, sponsored by Student Government, was the second of its kind, and the color change was the main issue for this semester's forum.

"We are coming very close to a

### Inside:

News: Speech team places sixth overall in the Otterbein Speech Tournament. Page 2.

Features: Dr. Christopher Boehm is honored by the NKU Museum of Anthropology. Page 6.

Sports: 1989-90 women's basketball season is previewed. Page 10.

# News

October 25, 1989

## Early registration begins

BARB BOLENDER  
NEWS EDITOR

Early registration began this week and according to Registrar Jerry Legere, it is the "students' best opportunity to get the classes wanted, at the times wanted, with the professors wanted."

Schedule request forms may be picked up this week, and submission begins next week. Request forms may be submitted as follows:

**Monday, 10/30**

Graduates

Post Baccalaureates

**Tuesday, 10/31**

Seniors

**Wednesday, 11/1**

Juniors

**Thursday, 11/2**

Sophomores

**Friday, 11/3**

Freshman

If submission dates are met, this represents the only time in which a student may register with priority. "No lower classifications will be processed before upperclassmen as long as they turn packets in by deadline dates," said Legere.

Legere said there are many advantages to early registration including registering by mail, dropping off the form without having to stand in line, and having the schedule mailed to your home.

In addition, students will be able to drop/add immediately to get their desired schedules.

## Speech team director wants more participation

MICHELLE WILLOUGHBY  
STAFF WRITER

Northern Kentucky University's Individual Speech Team placed 6th overall October 13, and 14, in the Otterbein College Speech Tournament in Columbus, Ohio.

Durrell Hamm, Director of Forensics, said, "I was well pleased by the results."

Northern's speech team competed with 25 other schools representing the East coast, Southeast, and Midwest regions.

"My number one goal," said Hamm, "is to have more participation from the student body."

"There are many positions open for anyone who is interested in either the Individual Events Speech Team, or in the Debate Team," said Hamm.

Listed below are the individual won from the Otterbein Tournament:

-- Jody Borge, freshman, has won awards for her 1st place finish for Novice Dramatic Interpretation, 3rd place finish for Novice Poetry, 4th place finish for Open Dramatic Interpretation, and 4th place finish for Novice Prose.

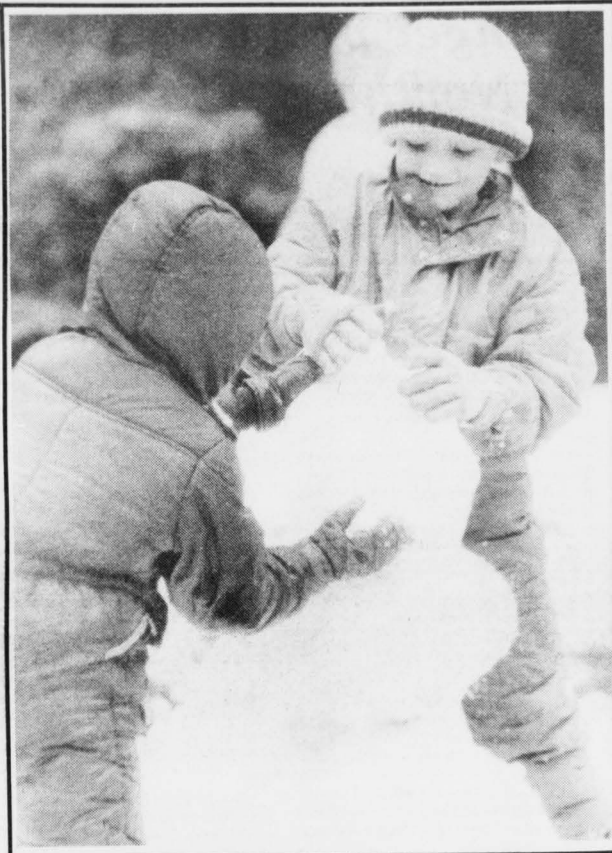
In addition to the individual awards, Hamm said, Borge was recognized as being the 5th best novice speaker at the tournament.

-- Michelle Deely, sophomore, had finished 3rd place in the event of Communication Analysis.

-- Brian Clayton, freshman, finished 7th place in the Novice Impromptu Speaking event.

-- Nikki Schnieder, freshman, had

See SPEECH page 3



Adam Dickman and Chad Wachsof Park Hills enjoy an unexpected snow day playing along I-275 on the way to NKU. Photo by Scott Rigney.

## Minority highschoolers offered a collegiate look

MARILYNN ANDERSON  
STAFF WRITER

"Minority Student Collegiate Day" for high school seniors and graduates will be held at Northern on Monday, October 30 in the University Center.

Registration will be held at 8 - 9 a.m., and the potential students will be assigned a host or hostess for the day's activities.

This day is part of NKU's expanding effort to inform African-American students of the opportunities for undergraduate study at Northern. Prospective students will explore the

opportunities offered in NKU's Colleges of Professional Studies, Business, and Arts and Sciences.

In addition, students will examine admissions and financial aid procedures, intercollegiate athletics, and the nationally recognized Honors Program.

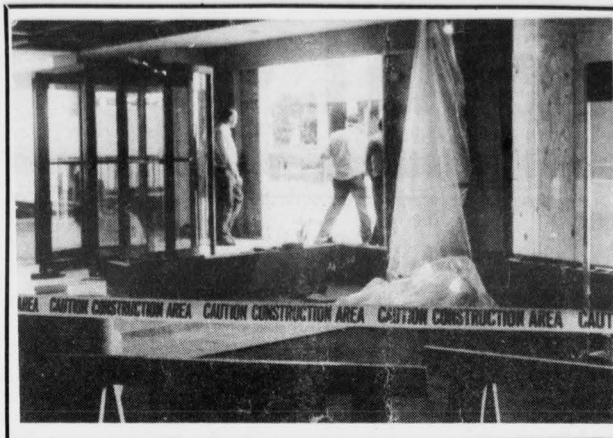
A luncheon panel discussion, "NKU - From the Student Point of View," will be presented by NKU undergraduates and alumni to examine various aspects of campus and career life.

This free program is limited to the first 200 senior students who register. For more information, call 572-5220.

### The Northerner Staff

Advertising Manager.....Tami Cornelius	News Editor.....Barb Bolender
Assistant Ad Manager.....Lem Davis	Sports Editor.....Don Owen
Business Manager.....Mike Wright	Photo Editor.....Scott Rigney
Copy Editor.....Marta Stauber	Typesetter.....Mendy Koons
Features Editor.....Jeffrey Bohr	Cartoonist.....Dave Cowles
Distribution Managers.....Shelly Helmer & Melissa Yates	Adviser.....Jack Crowe

THE NORTHERNER IS PUBLISHED EVERY TUESDAY AFTERNOON DURING THE SCHOOL YEAR WITH THE EXCEPTION OF VACATION AND EXAM PERIODS. THE NORTHERNER IS A MEMBER OF THE ASSOCIATED COLLEGIATE PRESS AND THE KENTUCKY INTERCOLLEGIATE PRESS ASSOCIATION. ANY CORRESPONDENCE DIRECTED TOWARD THE PAPER SHOULD BE ADDRESSED TO THE NORTHERNER, UNIVERSITY CENTER 209, NORTHERN KENTUCKY UNIVERSITY, HIGHLAND HEIGHTS, KY. 41076. NORTHERN KENTUCKY UNIVERSITY IS AN EQUAL OPPORTUNITY, AFFIRMATIVE ACTION EMPLOYER.



With the changing of the doors NKU administration center gets a face lift. Photo by Melissa Lauer.

## New doors revolving around Administration building

LEM DAVIS  
STAFF WRITER

The construction on the main entrance of the Administration Building has caused much inconvenience over the past few weeks.

What's being done? According to Mary Paula Schuh, director of campus planning, a revolving door is being installed along with two single doors for handicap usage. Joe Gimpel, superintendent of construction trade, said replacing the old doors was necessary because it was costing N.K.U. \$2,000 every six to nine months in repairs. Schuh said the old doors were too tall (nine feet) and heavy which made it difficult to open by hand. This caused a lot of people entering the building to use the handicap doors, which automatically open and would remain open allowing the cold air in

during the winter and the cool air out during the summer. This situation made the lobby area unusable because of the uncomfortable cold draft. Schuh went on to say that with the new doors, energy savings could be as much as 90 percent. With the energy saving and the saving in repair cost, hopes are that the new doors cost of \$22,690 will pay off in the long run.

Why weren't the doors installed over the summer? Schuh explains that the approval process took much longer than they had anticipated and they did not want construction going on during fall registration period. This is the time period when the Administration building experiences the most traffic.

Students, faculty, and staff can look forward to the week of Oct. 23-27 for the new doors to be in full operation.

### FORUM from front page

and gray are not traditional colors.

"There is no right or wrong answer," he said. How the colors are used is what's important."

Cost is the biggest problem the color change produces. Hollister estimated about \$47 thousand could be spent on the new colors with the principle area of cost occurring in the athletic department.

The gym floor will have to be

repainted, new uniforms will be needed and all new vehicles will be blue grass green and gray, said Hollister.

"The new image, what is it?" Hollister asked.

The institution needs to decide what it stands for; its certain values and qualities, Hollister replied.

"It's not a new image; we want to take the really strong points of the university that makes it good and different and enhance the message NKU is trying to convey," answered Hollister.

### SPEECH from page 2

finished 5th place in the Novice Poetry event.

Hamm said the speech tournaments are based on 10 individual events. Participants can choose any event they want from the events.

The events used in speech tournaments are listed below are from the NFA Event Rules furnished by Hamm:

- Persuasion
- Extemporaneous
- Impromptu
- Rhetorical Criticism

- Expository
- Prose
- Poetry
- After-Dinner
- Dramatic Duo
- Dramatic Interpretation

If anyone with communications, or theater background is interested in participating in either the Individual Speech Team, or the Debate Team, please contact Mr. Durrell Hamm, Director of Forensics, at 114 LA, or at 572-5435.

## Workshop focuses on Japanese teaching methods

PAUL MCGUE  
STAFF WRITER

"Focus on Japan" is the topic of a one-day workshop for elementary and middle-school teachers of social studies on Saturday, October 21, in NKU's BEP Center, 8:30 a.m. - 3:00 p.m.

Dr. Jeff McMahon of Local School Services said, "about 150 teachers are registered. This is our fourth year for the workshop and the teachers already registered have been on a waiting list."

The workshop will focus on materials and methods for teaching

about Japan on the elementary/middle-school levels.

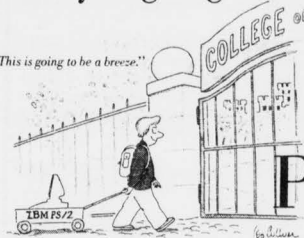
The workshop includes lectures and discussions on modern Japanese family, language, and culture, also hands on activities useful in the classroom.

Cost of the workshop is \$10. The event is sponsored by the Cincinnati Chapter of the Japanese American Citizens League, Consulate General of Japan, and Northern Kentucky University's Department of Education.

For information on registration, call 572-5632.

## How're you going to do it?

"This is going to be a breeze."



### Great back-to-school prices on PS/2's.

Just in time. You can pick up an IBM Personal System/2® with easy-to-use software loaded and ready to go. And best of all, you get it at a special low back-to-school price.

And that's not all. When you buy the PS/2® you can get a great low price on PRODIGY®, the exciting new shopping, information and entertainment computer service. Start this semester up and running with a PS/2 at a low, low price.\*



PS/2 Model 30 286—1Mb memory, 80286 (10 MHz) processor, one 3.5" diskette drive (1.44Mb), 20Mb fixed disk drive, IBM Mouse, 8533 Color Display, DOS 1.0, Microsoft® Windows/286, Word 5.0,\* hDC Windows Express,\* hDC Windows Manager,\* and hDC Windows Color.\*

\$2,299

PS/2 Model 50 5x—1Mb memory, 80286 (10 MHz) processor, one 3.5" diskette drive (1.44Mb), 30Mb fixed disk drive, Micro Channel architecture, IBM Mouse, 8533 Color Display, DOS 4.0, Microsoft Windows/286, Word 5.0,\* Excel,\* hDC Windows Express,\* hDC Windows Manager and hDC Windows Color.\*

\$2,799

PS/2 Model 55 SX—2Mb memory, 80386SX® (16 MHz) processor, one 3.5" diskette drive (1.44Mb), 60Mb fixed disk drive, Micro Channel architecture, IBM Mouse, 8533 Color Display, DOS 4.0, Microsoft Windows/386, Word 5.0,\* Excel,\* hDC Windows Express,\* hDC Windows Manager and hDC Windows Color.\*

\$3,499

Now, special low prices on three models of IBM Printers™, too.

NKU Bookstore

8:30 - 6:30 Monday - Thursday  
8:30 - 4:30 Friday

IBM®

\*Microsoft Word and Excel are the Academic Editions. This offer is limited to qualified students, faculty and staff who order an IBM PS/2 Model 8530 E21, 8550-031 or 8555-061 on or before October 31, 1989. Prices quoted do not include sales tax, handling and/or processing charges. Check with your institution regarding these charges. Orders are subject to availability. IBM may withdraw the promotion at any time without written notice. IBM Personal System/2 and PS/2 are registered trademarks, and Proprinter and Micro Channel are trademarks, of International Business Machines Corporation. PRODIGY® is a registered trademark of Prologix Services Company, a subsidiary of IBM and Sears. Microsoft® is a registered trademark of Microsoft Corporation. hDC Windows Express, hDC Windows Manager and hDC Windows Color are trademarks of hDC Computer Corporation. 80386SX is a trademark of Intel Corporation. © IBM Corp. 1989

# Viewpoint

**EDITOR**

Melissa Lauer

**MANAGING EDITOR**

Holly Jo Koons

**ASSOCIATE EDITOR**

Tom Handorf

Editorials are written by the Editor, Managing Editor and Associate Editor of this publication. Opinions in this section do not necessarily reflect the views of the Adviser, writers or staff of *The Northerner*. Editorial replies and letters to the editor are welcome and encouraged.

## School colors: what are they going to be?

The administration wants to create a new image for Northern Kentucky University. Part of the creation could include changing the school's colors.

First of all, there is too much vagueness about what the colors really are.

Right now NKU's colors are white and gold accented by black. Many people think the colors are gold and black.

University Relations Vice President Peter Hollister said that this misconception occurs because the colors gold and white are so hard to work with. White can't be used for letterhead, etc and gold never comes out looking metallic. It usually looks yellow. So black is used as an accent because it's easy to work with.

The suggested color change is to bluegrass green and gray. White and gold are academic colors. Bluegrass green and gray look corporate. Is NKU a school or a business?

To some, academics are more important - so let's stick with white and gold. For others bluegrass green and gray are more appropriate.

Which ever colors they decide upon, NKU will be stuck with them. (Unless they change them again in 10 years.) But right now we're in limbo waiting for their decision.

Let's not delay this decision too long. NKU needs colors. As students of NKU, we need to have an image we can stand behind. By not even being able to grasp on to the identity of our own colors, how are we supposed to know who we are or what we stand for as a college. There's a need to decide what the colors are or will be and to do this promptly.

Being a new institution, NKU hasn't developed many traditions. It's still young. The school colors are part of NKU's tradition. So should they be changed at all? That's a question the administration is dealing with.

But if there is a change let's do it soon and develop a tradition before it's too late. Either change the colors to bluegrass green and gray, gold and black or leave them as white and gold.

Sometimes things are best left as they are. Sometimes change is for the better. But we'll never know until a decision is made. Maybe a scientific poll should be conducted to test out the colors here at NKU. We need to see what the whole school, students, staff, faculty, etc. think about the issue.

Along with the color change, the administration is also thinking about a logo change, and Hollister mentioned a possible change of the school mascot. He asked the students who attended the Student Government Student Forum how they felt about going from Norsemen and women to Vikings because "What's a Norse?" Hollister asked. (The mascot change is just a suggestion Hollister brought up at the meeting and has not yet been fully considered.)

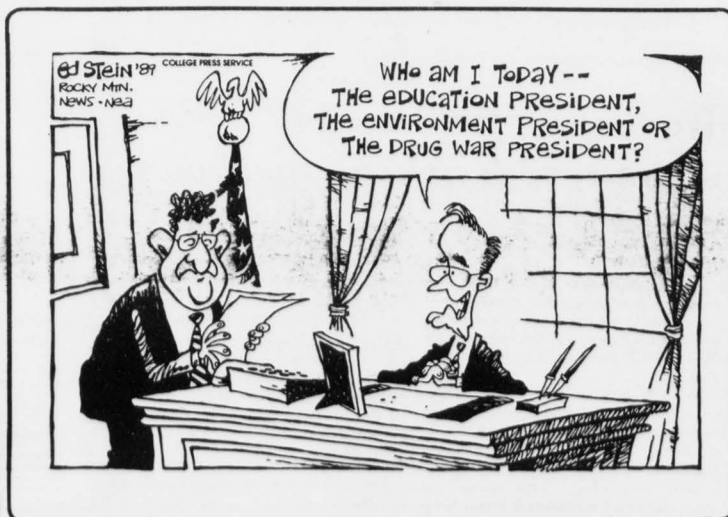
Change might be in NKU's best, or it might be for the worse. The scary part of this dilemma is how much it's going to cost. Hollister estimated \$47 thousand for just getting the colors changed in the athletic department (new team uniforms, painting the gym floor, etc.)

Imagine what the total cost will be for a total change over. Vans, letterhead, T-shirts, and other NKU souvenirs. Pretty scary, huh? Well it's just in time for Halloween. BOO!



**Editor's Note:** A student has complained about the advertisement found on the classified page of this week's paper concerning Visa and Mastercard. The student sent money to this company a month ago and has not received a response. This student believes the ad to be a fraud. This is a warning about the ad. If you send them

money it's at your own risk. *The Northerner* is not responsible for any advertisement that appears in the paper. We take these ads in good faith of the advertiser that they are true. We are still under obligation to run this particular ad due to the contract we have with the company.





# Readers' Views

## Alcohol ads need changing

DEAR EDITOR,

I believe most advertisements of alcoholic beverages should be banned or modified because television presents only a positive nature toward drinking. A second reason I propose a ban is that ads in leading magazines portray alcohol as a tool in seduction. A third reason I suggest this halt is that advertisers want to portray alcohol as a cure for loneliness; they offer alcoholic beverages as the nucleus for social events.

Shouldn't the truth about the effects of alcohol consumption get as much equal time as the advertisement of beer and liquor commercials? Upon completion of an alcohol awareness course at Christ Hospital, I learned that a person may see some 60,000 beer commercials by the age of twenty-one. Why not have a printed message flashing across the bottom of a beer commercial that would warn the viewer of some of the negative sides of drinking? Our Surgeon General has

required warning labels on cigarettes for several years now; why not apply this to alcohol?

Wine coolers are marketed as a beverage made with a beautiful array of whole fruit thus portraying it as a fruit-flavored drink. Retailers have reported that as a result of this kind of advertising, children have been trying to purchase the coolers. They think the coolers are a new kid's treat. Should this kind of advertising be tolerated?

The beer and wine companies are not allowed to show customers drinking on television commercials. They don't have to. In a recent Miller draft commercial, I saw a beer being poured into a glass. The camera zoomed in on the beer showing off its color and richness while mentioning how good it would taste at the end of a hard day's work. There are seven days in a week. I wonder what day the advertiser was talking about? Is it wise to drink everyday?

In a recent magazine ad I saw a man and a woman in a very intimate setting

sharing a cognac. The couple were dressed and posed in a way that suggested the drink would be a fabulous vehicle for seduction. Is it the drink itself, or the effect of the drink that made it a good tool this ad?

The media portray alcohol as a cure for loneliness, and they seem to make alcohol the center of social events. Many commercials and ads show a party with people moving through the crowd while they are immediately recognized and welcome by others in the group. The people in this group are shown with alcoholic drinks in their hands. How is the drink being sold here? Obviously there are other places where people are recognized and welcomed. A church gathering might be such a place. Does the drink contribute to a person's recognition and welcome? If so, can't a person socialize just as easily while drinking a cup of coffee?

The newest fad in the advertising of alcohol is the sports bar. The slogan is: "Don't go to the game, watch it here on

See ALCOHOL page 13

## University 101 found beneficial for student

DEAR EDITOR,

I am a freshman at NKU. Like any college student, I came to Northern not knowing very much about the campus, or what to expect from my classes, but one thing has really helped me adjust.

I enrolled in the University 101 course. In the beginning, I didn't want to take the course. I assumed that it would be a waste of my time, and that I just didn't need it, but my advisor convinced me that it was a good choice and I finally agreed.

Eight weeks later, I am happy to say that it was definitely a good choice. It has helped me more than I ever would have imagined. It has made me more aware of things that the campus offers. It has helped me schedule my time more successfully, and I have also picked up a lot of new study skills from the course.

The course is in all ways beneficial, and has made my adjustment to college much easier. I would recommend this course to all freshmen. Although you think it may be a waste of time, it could very much be the most important course of your college career.

Clara York

## Readership drops for the *Lost Cause*

DEAR EDITOR,

Has anyone else noticed that readership of the *Lost Cause* appears to have slipped drastically, even from last year?

It has been on the stands for about three weeks and issues are still available in abundance.

Why does it seem no one is reading the *Cause*?

Now, before I get accused of attempting to divert readers from *The Northerner* to the *Cause*, let me say that these two campus publications are not interchangeable. They present different perspectives on stories and trends. Neither can be substituted for the other. *The Northerner* is published weekly to provide local and national campus "news" news. The *Lost Cause* is published quarterly and brings perspective to that and other kinds of news. It even has a motto.

"In the belief that free and open communication between viewpoints is essential in the university setting, the *Lost Cause* serves the NKU student body by providing a forum for alternative views and opinions." (author's emphasis).

So the *Cause* is here to serve the students. You pay for it, just like you pay for *The Northerner*. They are complimentary because you've already paid for them. The university funds them, in part. And you fund the university with your tuition.

So why cheat yourself? You paid for it.

Editor Wylie Jones knows why the *Cause* is still on the stands. He said the staff wasn't "shocked" that it is.

"Northern's students are often not intellectually inquisitive ... and open to diverse viewpoints," he said, adding that "some students -- and even administrators -- are hostile to some of the viewpoints presented."

That's easy enough to believe. People in general are often hostile to views they disagree with. But you can't disagree with the *Cause* if you don't know what it says. And no matter what you hear it says, you don't know until you read it.

So you don't like "alternative views." You don't even want to be exposed to

them. But you should. You can't beat the enemy if you don't know his game plan.

And after all, it may be just an illusion that *Cause* readership is down. It may be stable. Or stagnant, depending on your perspective.

Jones, a co-editor last year, said that 4,500 copies of the first issue were available this year. Only 3,000 of each issue were printed last year, and that was twice as many as the previous year.

So actually, the number of copies taken seems to be consistent simply because there are more *Cause*'s around to not pick up. Several of those 3,000 copies stayed on the stands as long as they have this semester, Jones said.

So if people are reading it, why am I so riled up about the ones who aren't. Because they aren't.

Out of over 10,000 students, faculty, and staff, less than 3,000 read it. While not a dismal percentage, it's pretty poor. This is a university, and it's community should be engaging in "free and open" exchanges of philosophies and viewpoints.

Cindy Strong, editor during 1987-88, said the lack of readership is not so much caused by flooding the market as by the new format of the *Cause*.

"It looks like *The Northerner* ... everybody knew to look for that different colored paper (it used to be printed on). It's image went along with its content as an underground press."

The word "underground" has certain negative connotations -- leftist, radical, subversive, communist, anarchist, or any other label you wish to apply in definition. I would say a better one is "not mainstream." Can't the political right have an underground too?

*The Cause* has been the black sheep publication at NKU since its inception. Its advocates may be naturally limited by personal politics and philosophies, but that doesn't mean its readership should be so limited.

So if you haven't read the first issue of the *Cause*, do it. Disagree. Rant like all get-out. Then compose yourself and sit down and write Wylie Jones a rebuttal or a letter. Soapbox for your own cause. But at least know what you're disagreeing with.

Maribeth Lienhardt

# • Features •

October 25, 1989

## Film series honoring anthropology professor begins

"Violence, Conflict and War" is a six week film series

**JARED BARLAGE**  
STAFF WRITER

NKU's Museum of Anthropology is honoring Dr. Christopher Boehm, a professor of anthropology at NKU, with "Violence, Conflict and War", a six week film series.

The free film series began last Tuesday with a lecture by keynote speaker, Dr. Boehm. Dr. Boehm is a Harvard graduate and the author of numerous books and articles on conflict, resolution and the evolution

of morality.

The first film in the series was at 12:15 p.m. and 7:00 p.m. on Tuesday, October 24. The film, *Among the Wild Chimpanzees*, updated the work of Dr. Jane Godall. The film focused on everything from the rearing of the young chimps to hunting and dominance hierarchies.

*The Feast*, a film focusing on two villages of the "Fierce People" and their attempts to make peace, will be shown the following Tuesday, October 31.

On Tuesday, November 7, *Dead*

*Birds* will be shown. *Dead Birds* focuses on the Dani people of New Guinea. Enemy villages are seen in a seemingly endless cycle of revenge warfare where the murder of a friend or relative requires retaliation against the enemy until one of their number has been killed.

The final film of the series is *Gang Cops*, a film about the notorious gangs of Los Angeles and the police who patrol the gang-ridden areas. The film can be seen on Tuesday, November 14.

The last presentation of the series is a

panel discussion by distinguished guests. Tuesday, November 21, Dr. Boehm will join Dr. Jerald Richards of philosophy, an expert on the nuclear movement, and U.S. Attorney D. Michael Crites, an expert on drugs and gangs, who will discuss societal violence and war and ways of reducing such aggression.

All the films can be seen at 12:15 p.m. in LA room 110, except *Among the Wild Chimpanzees* which was shown in 320 Nunn Hall, and was shown again at 7:00 p.m. in LA room 506.

## Bulow chosen as fraternity sweetheart

**JEFF BOHR**  
FEATURES EDITOR

For those uninitiated to the Greek life experienced by members of sororities and fraternities, many customs must seem strange.

Most people, however, know that fraternities are for men and sororities are for women. And once in a while, a fraternity will specifically honor a woman, or a sorority will do the same for a man.

Such an honor was bestowed on Heather Bulow, 21, by the Alpha Delta Gamma fraternity at their national convention. Bulow, a member of the Phi Sigma Sigma sorority at Northern, was selected as the 1989 Alpha Delta Gamma National Sweetheart at the convention. The convention was sponsored by Northern's own Tau chapter of Alpha Delta Gamma, and took place August 24 - 27 in Covington.

Bulow was selected for the honor from a group of women representing ADG chapters from across the country. According to Mike Chumbley, member of Alpha Delta Gamma, approximately 100 members from chapters as far away as California, Massachusetts, and Louisiana were represented at the convention. Each chapter nominates its own sweetheart and final voting is done at the convention.

Bulow became involved with the fraternity three years ago when she began dating a member. She has been "around the fraternity ever since."

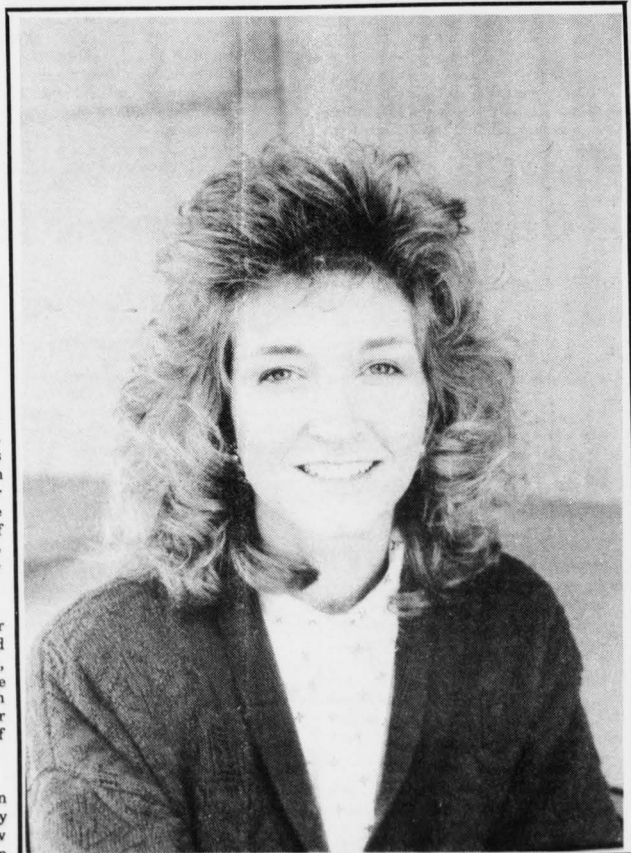
Although the fraternity does not currently have an established national "Little Sister" program, such a program is being renewed after a long absence from ADG chapters.

Bulow said that the convention weekend was "a really great time." Between the fraternity's conferences and meetings, Bulow and the other nominees took part in the social activities with the visiting ADG's. "(We were at) King's Island all day and night," Bulow said, "and going out at night was a lot of fun."

Bulow is entering her fourth year as a member of the Phi Sigma Sigma sorority. Currently, she holds the position as alumni relations officer. She has also been Pledge Mistress, preparing pledges for initiation; and has also held the scholarship office to uphold the GPA's of the Phi Sigma Sigmas. Bulow has also helped the sorority with many fund-raising activities.

Off campus, Bulow likes to go water skiing and boating in the summer, and snow skiing in the winter. When inside, she likes to watch old black-and-white cartoons or *Monday Night Football* with her friends. And last but not least, another of Bulow's favorite activities: "... of course-party!"

Bulow expects to finish at Northern in the fall of 1990. Her major field of study is business management, and Bulow plans to put her personnel administration skills to use in a corporate human relations department after graduation.



Alpha Delta Gamma fraternity sweetheart Heather Bulow. Photo by Scott Rigney.



Lynn and friends entertain students at the UC Theater last Wednesday. Photo by Scott Rigney.

## Evelyn's Daughter

### Dear Too Late,

What a nice problem to have! You like someone that at one time evidently liked you. Perhaps your shyness is one of the things that attracted him to you. Why not casually ask him to lunch some day. Something like, "Gee, it's so nice to see you again, maybe we can have lunch someday and go over old times" or "We'll have to get together for lunch and catch up on old times". If he agrees set up a

lunch date right then. Good luck and let me know how it goes.

Sincerely, E.D.

If you have a problem and you don't know what to do or who to turn to, write to Evelyn's Daughter (E.D.) and maybe she can help you find a solution. Send your letters to *The Northerner's* office, UC Center, Room 209. Please remain anonymous.

### ZOO U. by Mark Weitzman



Weitzman - 1989 Mark Weitzman  
"We need to mess-up this place before everyone gets here."

### COOPERATIVE EDUCATION

get experience while you earn your degree..

- RECEIVE ACADEMIC CREDIT.
- PART TIME OR FULL TIME POSITIONS.

Fall Deadline November  
3rd

SEE MARK C. DE CHANT  
U.C. 320, ext. 5681

## The ACE REPORTER'S Football Follies Contest

Because students probably don't know any Inca trivia, or for that matter, care to know any, we thought a football contest would be our best offering.

Since this is Bengals' country, we thought giving away Bengal merchandise, specifically hats, to all our winners would be an '80's type idea. All you, as an *apathetic* student, have to do is guess the winners in selected NFL games. It's that easy.

The rules are self explanatory. Whoever picks the most correct games, wins a Bengals hat. In case of a tie, whoever wins the tie-breaker gets the hat.

Almost everyone is eligible to enter this contest, except *Northerner* personnel, Pete Rose, and Bengals players. Only one winner per week. No purchase necessary.

Bring ballot(s) to *The Northerner's* office, UC 209, by Friday afternoon (Oct. 27).

Tampa Bay at Bengals\_\_\_\_  
Houston at Cleveland\_\_\_\_  
Kansas City at Pitt.\_\_\_\_  
L.A. Rams at Chicago\_\_\_\_  
Miami at Buffalo\_\_\_\_  
Phil. at Denver\_\_\_\_  
Phoenix at Dallas\_\_\_\_  
San Diego at Seattle\_\_\_\_  
Wash. at L.A. Raiders\_\_\_\_  
Minn. at N.Y. Giants\_\_\_\_

### TIE-BREAKER

- 1.) Pick the score of the Bengals game:  
Tampa Bay\_\_\_\_ Bengals\_\_\_\_
- 2.) How many rushing yards will James Brooks have? \_\_\_\_

### L.A. CONNECTION

HOT\*\*NEW\*\*NITE CLUB  
LARGE DANCE FLOOR  
Alexandria, Ky. 635-1913

### Halloween Party

Saturday, October 28th

Prizes for best costume... 1st - \$75  
2nd - \$25  
3rd - \$15

with

Gradual Taylor playing Oct. 25th - 27th - 28th

### MONDAY NITE SPECIAL

### ACNE?

\* We are looking for volunteers to participate in a medical research study testing a new preparation to apply to your face for treatment of acne.

\* Compensation will be provided. If interested, please call for an appointment.

DERMATOLOGY RESEARCH ASSOCIATES  
232-3332



## Three days of concern about eating disorders

MICHELLE WILLOUGHBY  
STAFF WRITER

NKU's Activities Programming Board and Women's Center are presenting Eating Disorders Awareness Week October 24, 25, and 26, 1989.

The Eating Disorders Awareness Week is concerned with the eating disorders of Anorexia Nervosa and Bulimia Nervosa. "Anorexia Nervosa is an intense fear of weight gain, characterized by self-induced starvation and a distorted perception of body appearance," said the Christ Hospital Eating Disorders Unit. The symptoms to look for include:

- ¶ A significant loss of body weight (15 percent or more)
- ¶ A compulsion with exercise and dieting
- ¶ Alternate hyperactive and depressed states
- ¶ Low self-esteem, moodiness, social isolation, insecurity and a denial of the problem.
- ¶ A tendency to be a perfectionist and an overachiever.

The Eating Disorders Unit said if anorexia is not treated, it can lead to low blood pressure, severe electrolyte imbalances, high cholesterol levels, sterility, osteoporosis, intellectual impairment, arrested growth, permanent organ damage, and even death.

"Bulimia Nervosa is also an obsession with weight gain, but instead starving themselves, bulimics 'binge' on food, and then 'purge' themselves by vomiting or using laxatives/diuretics," said Christ Hospital's Eating Disorder Unit. "Bulimics are ashamed of their behavior and hide it from others." This makes it harder to detect, said the Eating Disorders Unit, especially since it is not usually accompanied by drastic weight loss. Other symptoms of Bulimia include:

- ¶ Use of alcohol or mood-altering chemicals.
- ¶ Low self-esteem, loneliness, and isolation
- ¶ Feelings of incompetence
- ¶ Dishonest behavior

"Bulimia's effects can be extremely serious, causing digestive tract problems, damage to the esophagus and depletion of body substances that can lead to heart failure and death," said the Christ Hospital's Eating Disorder Unit.

The schedule of events include:

See DISORDERS page 9

# Calendar

## 26

Thursday

- NKU Campus A.A. Meeting every Thursday at the health center in room 206. The only requirement for membership is the desire to stop drinking.
- *Dance NTV*, presented by WNTV, dances the night away from 9:30- 10:30 every Thursday night in the TV studio at LA. Come over and be on TV.

## 27

Friday

- Find a Halloween party. But remember, drinking and driving don't mix.

## 28

Saturday

- Today's the day you promised your parents you'd clean up your room. Fulfill your destiny. It's fun, it's needed, and it's the law.

## 29

Sunday

- The Bengals take on the Tampa Bay Buccaneers in the friendly confines of the Jungle at 1 p.m.

# of Events

## 30

- Last day to register for co-rec racquetball tourney. Register in Albright Health Center room 547.
- Student Government Book Grant and Scholarship applications available in UC 208.

## 31

Tuesday

- Halloween: Enjoy the spooks and goblins 'cause they're neat-o!
- Pumpkin carving contest in the UC lobby from 11 a.m. - 1 p.m.
- Last day to register for men's and women's 1-on-1 basketball tourney to be held in AHC.

## 1

Wednesday

- Registration begins for 4 week dance exercise classes. For more info call the Albright Health Center at 572-5197.
- Jane Powell and Company concert at 8 p.m. in the UC Theater. It's sponsored by APB.
- ASTRO (Adult Students Toward Renewed Opportunity) will meet at noon in room 116 in UC. Bring a lunch. Everyone welcome. For more info call Maureen Sample at 525-1061.
- Student Government Gripe Day. Unleash your anger, and let your voice be known. UC lobby 10 a.m. - 2 p.m.

## 2

Thursday

- NKU Campus A.A. Meeting every Thursday at the health center in room 206. The only requirement for membership is the desire to stop drinking.
- *Dance NTV*, presented by WNTV, dances the night away from 9:30- 10:30 every Thursday night in the TV studio at LA. Come over and be on TV.

## DISORDERS

from page 8

¶ The Women's Center is sponsoring Tuesday, October 24, a free film called *Disting: The Danger Point* at the University Center from 12:30 p.m. to 1:30 p.m. Bev Reno, nursing department, will introduce this film and be available afterwards for comments.

¶ The Activities Programming Board and the Women's Center are sponsoring Wednesday, October 25, a free play, *FOODFRIGHT: The Daily Battle To Remain Thin*, at the University Center Theatre from 11:00 a.m. to 2:30 p.m. A \$1.00 lunch will be available that day for theater goers.

¶ The Activities Programming Board and the Women's Center will have an information table set up Thursday, October 26, from 11:00 a.m. to 1:00 p.m.

Generally, the person with the eating disorder denies that she has a problem. Therefore, it is up to the friend and relative to make the first step. The following questions by the Christ Hospital Eating Disorders Unit are important because it is necessary for friends and relatives to be able to recognize the symptoms of eating disorders as the first step to receiving proper treatment. The questions are the following:

### Questions about Anorexia:

1. Do you know someone who is intensely afraid of gaining weight, even when others are concerned about how little she eats?
2. Does she weigh herself several times a day?
3. When she can't exercise, does she panic at the thought of gaining weight?
4. Does she prefer to eat alone so you won't notice how little she eats?
5. Has she cut herself off from friends and family who have expressed concern over her eating habits?
6. Have you noticed her hoarding, concealing, or throwing food away?
7. Is she obsessed with thoughts about what she will and won't eat?
8. Does she experience dizziness or fainting?
9. Does she use laxatives or self-induced vomiting as a means of weight control?
10. Have her periods stopped or become irregular?
11. Is gaining weight one of the overriding fears in her life?

### Questions About Bulimia:

1. Do you know someone who frequently 'binges' on large quantities of food within a short period of time?

See DISORDERS page 13



# Sports

## Lady Norse ready for NCAA encore

### WOMEN'S BASKETBALL PREVIEW

**DON OWEN**  
SPORTS EDITOR

The 1988-89 basketball season ended too quickly for the NKU Lady Norse.

Coach Nancy Winstel watched her team record a fourth straight 20-win season (21-7) and advance to their fifth consecutive NCAA tournament. The Lady Norse overcame a mid-season swoon, in which they lost three straight conference games, to catch Bellarmine and finish second in the Great Lakes Valley Conference, assuring themselves of another postseason trip.

Unfortunately, the Lady Norse were pitted against Oakland University on the Pioneers' home floor in the first round of the tournament. Even more unfortunate was the fact the Lady Norse's old nemesis decided to show up again ... overtime.

For the third consecutive year, NKU was eliminated in overtime, this time at the hands of Oakland, 95-93. Missed free throws and a game-tying three-pointer by the Pioneers late in regulation broke the backs of Northern, as the Lady Norse never recovered during the overtime. NKU had entered the tournament winners of eight straight games and appeared to be on a roll, but in a year of continuing streaks, the O.T. bugaboo bit them again. And in the process, many fans were left wondering "What if?"

Winstel, who owns a 129-40 won-loss record at Northern, may have the GLVC right where she wants it this season. While Lewis and Bellarmine have been tabbed preseason co-favorites to win the conference, Winstel is doing her best Lou Holtz imitation and lamenting her youthful guard situation. Obviously, the NKU coach enjoys having the onus of favorite placed on someone else, but the rest of the league isn't shedding tears for Northern. The Lady Norse are picked third, and with a talented front line returning, NKU will be a team to be reckoned with. A look at the strengths and weaknesses of the 1989-90 NKU Lady Norse:

**STRENGTHS:** Stenciled on the back of NKU's practice shorts are the words "Defense Wins," and for good reason. The Lady Norse led the GLVC in defense last year, limiting the opposition to 63.6 points per game. Rebounding is another area Northern excels in, finishing second in the conference to Lewis with

45.6 rebounds per contest and a rebounding margin of +8.9.

Although leading scorer and rebounder Cindy Schlarman is gone, the Lady Norse return more than enough talent and experience inside to compensate for her loss.

Senior Linda Honigford (13.7 ppg.) shot .541 from the field during an injury-riddled junior year. Versatile enough to play all three inside positions, the 6-0 Honigford can power underneath for points or bury opponents with a deadly outside jump shot. Also returning is 5-11 junior Christie Freppon (12 ppg., 7.7 reb.), who led Northern with 19 blocked shots. Holly Cauffman, a 5-11 junior, was effective as both a reserve and starter in '88-89, averaging 7.6 ppg. and 5.2 rebounds, while leading the Lady Norse in free throw percentage with .742. Add in Amy Middleton, a 6-1 sophomore, who could be the answer at center, 6-1 junior Kristy Wegley, plus 6-3 walk-on Kim Smith, and the Lady Norse have plenty of size.

Middleton's development could make the NKU inside attack difficult for any GLVC team to cope with, and even Winstel admits few teams are capable of stopping her post players once they are isolated.

#### WEAKNESSES:

Inexperience at guard and three-point shooting. UTEP coach Don Haskins once remarked, "Our guard situation is so bad that the buzzards are circling above practice everyday." That's exactly what Winstel is hoping the other GLVC teams are thinking in regards to NKU's young backcourt. Although the loss of Natalie Ochs took over 15 ppg. and left the backcourt void of leadership, Melissa Slone and Annie Levens each have starting experience. Slone, a 5-0 junior, led Northern in three-point shooting a year ago, hitting 7-18 (.389). Levens can be a n explosive scorer, averaging 5.5 in 1988-89.

Val Gaerke, a 5-10 sophomore, can play guard but may be better suited at small forward. Freshmen Gayanna Woinhas and Lori McClellan bring impressive high school credentials with them and could make an impact.

How little did Northern use the three-pointer last year? Let's put it this way: St. Joseph's scoring machine Jeanette Yeoman made 49 three-pointers, or 35 more than the entire Lady Norse

squad. Winstel promises her team will utilize the three more this season.

"We're going to run some special plays for the three this year," she said. "I'm not real good at math, but you get three points instead of two, and it can kill a team if someone hits a couple in a row. If 5-0 Melissa Slone hits a three, the fans go nuts ... and so does the other team."

Slone can hit the trey, but Levens or one of the other guards must also find the range in order to keep defenses from packing it in on NKU's inside people.

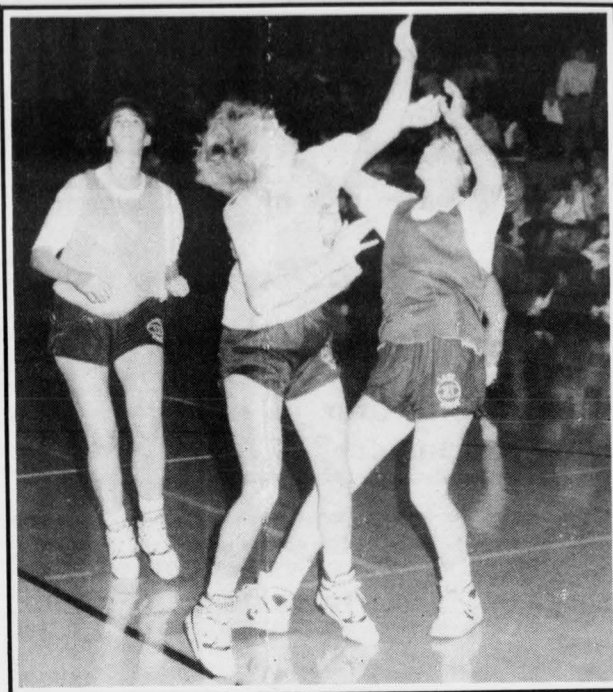
**SUMMARY:** A rugged non-conference schedule, featuring a season-opening road trip to Tampa and Florida Southern, not to mention home games with Louisville and Central State, should get the Lady Norse prepared for

the GLVC.

The inside game is solid, and in the multi-talented Honigford, the Lady Norse have one of the premier players in the conference. During an 87-71 victory over Lewis last season, Honigford racked up 26 points and yanked down 12 boards against the Lady Flyers' vaunted Chris Toscas. If the Cloverdale, Ohio, native remains healthy, such a performance could become the rule rather than the exception in 1989-90.

The backcourt is a question mark, but Levens could be the solution. She handles the ball well and showed signs of becoming a big scorer during her freshman year. If the guards produce, Northern can win the GLVC. If not, 1989-90 could be the year all of the streaks (NCAA, 20-win seasons and overtimes) come to a screeching halt.

NORTHERN KENTUCKY UNIVERSITY Women's Basketball Schedule 1989-90					Time
Day	Date	Opponent			
Saturday	Nov. 16	@ University of Tampa			7:30 p.m.
Monday	Nov. 20	@ Florida Southern College			7:30 p.m.
Saturday	Nov. 25	UNIVERSITY OF LOUISVILLE			3:00 p.m.
Friday	Dec. 1	Perkins/NKU Classic Pitt-Johnstown vs Jacksonville State NKU vs Lake Superior State University			6:00 p.m. 8:00 p.m.
Saturday	Dec. 2	Perkins/NKU Classic - Consolation Game Championship Game			2:00 p.m. 4:00 p.m.
Wednesday	Dec. 6	CENTRAL STATE UNIVERSITY			7:00 p.m.
Monday	Dec. 18	@ University of So. Illinois-Edwardsville			6:30 p.m.
Saturday	Dec. 23	LEWIS UNIVERSITY * *			5:15 p.m.
Saturday	Dec. 30	IUPUI-INDIANAPOLIS			3:00 p.m.
Thursday	Jan. 4	@ University of Indianapolis * *			5:15 p.m.
Saturday	Jan. 6	@ St. Joseph's College * *			6:30 p.m.
Thursday	Jan. 11	INDIANA/PURDUE - FT. WAYNE * *			5:15 p.m.
Saturday	Jan. 13	ASHLAND COLLEGE * *			5:15 p.m.
Thursday	Jan. 18	@ Kentucky Wesleyan College * *			6:00 p.m.
Saturday	Jan. 20	@ University of Southern Indiana * *			6:00 p.m.
Wednesday	Jan. 24	MOREHEAD STATE UNIVERSITY			7:00 p.m.
Saturday	Jan. 27	BELLARMINE COLLEGE * *			5:15 p.m.
Thursday	Feb. 1	@ Kentucky State University * *			5:00 p.m.
Saturday	Feb. 3	@ Bellarmine College * *			5:30 p.m.
Thursday	Feb. 8	UNIVERSITY OF SOUTHERN INDIANA * *			5:15 p.m.
Saturday	Feb. 10	KENTUCKY WESLEYAN COLLEGE * *			5:15 p.m.
Thursday	Feb. 15	@ Ashland College * *			5:00 p.m.
Saturday	Feb. 17	@ Indiana Purdue - Ft. Wayne			6:00 p.m.
Thursday	Feb. 22	ST. JOSEPH COLLEGE * *			5:15 p.m.
Saturday	Feb. 24	UNIVERSITY OF INDIANAPOLIS * *			5:15 p.m.
Thursday	March 1	KENTUCKY STATE UNIVERSITY * *			5:15 p.m.
Saturday	March 3	@ Lewis University * *			6:30 p.m.
Fri/Sat	March 9-10	NCAA Regional Tournament			'84



Amy Middleton, Gayanna Wohnhas and Christie Freppon battle for a rebound during "Midnight Madness". Photo by F. Keith Morgan.

### LADY NORSE ROSTER

#### Class

Holly Cauffman	.....	5-11	Jr.	F
Christie Freppon	.....	5-11	Jr.	F
Val Gaerke	.....	5-9	So.	G/F
Linda Honigford	.....	6-0	Sr.	C/F
Annie Levens	.....	5-9	So.	G
Lori McClellan	.....	5-7	Fr.	G
Amy Middleton	.....	6-1	So.	C
Libby Moses	.....	5-7	Jr.	G
Melissa Slone	.....	5-0	Jr.	G
Kristy Wegley	.....	6-1	Jr.	C
Gayanna Wohnhas	...	5-8	Fr.	G
Kim Smith	.....	6 3	Fr.	C

### NKU WOMEN'S TENNIS FINISHES SIXTH AT GLVC TOURNAMENT

The Northern Kentucky University women's tennis team finished sixth at the Great Lakes Valley Conference championships October 12 - 14, in Romeoville, Ill.

**TEAM RESULTS:** Bellarmine 27, St. Joseph's 26, Indianapolis 23, Kentucky Wesleyan 19, Southern Indiana 11, NKU 7, Lewis 3, IP-Ft. Wayne 1, Kentucky State 0.

## Soccer team wins two key matches

HEATH NORTHCUTT  
STAFF WRITER

NKU senior Herbie Kunz became the all-time scoring leader over the weekend as the soccer team won two key matches.

The Norsemen edged St. Joseph's (Ind.), 3-2, and Lewis, 3-1, to take over sole possession of third place in the GLVC race. Bellarmine and Southern Indiana stand atop the GLVC with 5-1 records heading into the final week of GLVC action.

Kunz, a 5-8 forward, had an assist against Lewis giving him 68 points (20 goals, 28 assists), one better than Mark Fisher's 67 point total achieved between 1982-85.

In the Lewis game, two freshman and a sophomore provided the offense. Freshmen, Kevin Wolff and Todd Gruenwald scored goals, as well as Marko Milicic.

Against St. Joseph's, junior Doug Niemczyk scored on a corner kick from freshman Larry Hutzel with only 1:11 left to give the Norse the victory.

Hutzel and senior Dave Winstead both scored in the first half.

NKU's record now stands at 5-9-1 overall and 4-1-1 in the GLVC.

The Norsemen have a chance to take over Southern Indiana in the standings when they travel to Evansville on October 20 for a 7 p.m. showdown with the Screaming Eagles.

"I felt good about our win over Lewis," said NKU coach Paul Rockwood, "We didn't play as well against St. Joseph's, but we won. I think for us to beat U.S.I., we'll have to play with more consistency."

The Norse rebounded from a slow start to post a strong showing in the GLVC. If they can keep it up they should make some noise in the tournament.

## Ashland stifles NKU's title hopes

KEITH SHERMAN  
STAFF WRITER

The NKU women's volleyball team suffered a major blow in their quest to win the Great Lakes Valley Conference championship, losing to Ashland in four games, 2-15, 16-14, 15-5, 15-7 at Regents Hall.

Northern fell to 7-7 overall, 5-2 in the GLVC, while Ashland upped its 1989 record to 15-8, 5-2 in the conference.

Earlier in the week, the Lady Norse had defeated Indianapolis, 13-15, 15-12, 10-15, 15-9, 15-13, and Southern Indiana, 15-6, 15-11, 15-13 at Indianapolis.

Juniors Ann Fishburn and Paula Glazier led the Lady Norse with 21 kills in the win over Indianapolis. Fishburn added six aces and Glazier had 20 digs. Senior Molly Messmer contributed 60 assists and six aces.

Against USI, Fishburn had 13 kills and three aces. Messmer added 30 assists and three aces, while Linda Schnetzer had 15 digs.

**The Health Center  
Pool  
Now Open**  
Pool renovations are complete.

**Hours:**  
**Sun: 2 to 7 pm**  
**Mon./Thurs: 11 am to 8 pm**  
**Fri.: 11 am to 7 pm**  
**Sat: Noon to 5 pm**  
**Lap Swimming:**  
**Tues/Thur: 7:15 to 9 am**  
**Wed: 8 to 10 pm**

**NOW IS  
THE TIME  
TO GET  
SERIOUS!**

OUR CLUB HAS  
EVERYTHING YOU NEED  
FOR SERIOUS RESULTS!

**START  
TODAY!**

- We feature:**
- Free weights
  - Stairmaster
  - Life cycles
  - Life rower
  - Much more

Special offer: 3 months \$59.00  
New members only  
Expires 12/13/89

Highland Heights 441-2292  
Ft. Wright 491-6002

**dixie nautilus**

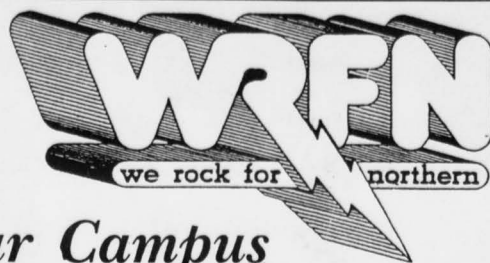


## STUDENT ESCORT SERVICE APPLICATION

*SG is now seeking people to be escorts .  
Hours available:  
Monday through Thursday, 7 pm to midnight*

Name \_\_\_\_\_  
Address \_\_\_\_\_  
Phone \_\_\_\_\_ Age \_\_\_\_\_  
Nights available to work \_\_\_\_\_

Please bring this form completed to the  
**Student Government** office UC 208  
or call 572-5149.



## Your Campus Rock 'n' Roll Station

Be sure to tune us in at the  
dorms on 810 A.M.

### Co-Rec Racquetball Tournament

Last sign up date: Monday, October 30th  
Play begins: Sunday, November 5th  
For sign up or information stop by AHC 129 or  
call 572-5197.

### MEN'S AND WOMEN'S BASKETBALL:

#### 1-ON-1 TOURNAMENT

A tournament for each division will be held on  
Tuesday,  
November 7th. Must be signed for event by  
Tuesday, October  
31st. To sign up or for more information call  
Campus Recreation  
at 572-5197.

WEDNESDAY,  
OCTOBER 25th

SATURDAY,  
OCTOBER 28th

**2**  
FRIGHTFULLY  
**FUN HALLOWEEN  
PARTIES**

**At**  
**BURGUNDY'S**  
**WEDNESDAY**  
**SHOCKING LOW DRINK PRICES**  
**... 50¢ ALL NIGHT!**

**FREE** MOVIE PASSES  
TO WES CRAVEN'S NEW THRILLER -  
**SHOCKER** ...AND MORE!

**FREE** ADMISSION IN COSTUME!  
HALLOWEEN COSTUME PREVIEW FROM -

**Stage Party**  
**SATURDAY**

**CASH PRIZE**  
FOR BEST OVERALL COSTUME!

**FREE** ADMISSION IN COSTUME!

Vine & Calhoun / Clifton

### Dancercise - 4 week session

Sign up begins Wednesday, November 1st at 8:30 a.m.  
Sessions begin Wednesday, November 15th at 5 p.m.  
For sign up or information stop by AHC 129 or call  
Campus Rec at 572-5197.

**WE'RE  
FIGHTING  
FOR YOUR  
LIFE**



**American Heart  
Association**

## CLIX

The couch potato watches in horror...

Welcome



Starring: Gorge Mush

Gorge Mush here.  
Today's topic:  
Elevator permit  
legislation.



Too many Americans  
are in grave danger  
when they step into an  
elevator which has no  
permit or a permit  
that has expired.

Inadequate inspection  
of such elevators  
poses as a threat to  
our society. We must  
fight this problem  
in Congress now!!

I propose that we pass a  
bill that will increase federal  
funding to \$8 billion for closer  
and more thorough elevator  
inspection - without  
raising taxes !!!

Next week:  
Damn  
Payle  
does  
something.

## ALCOHOL from page 5

our wide TV screen." These new bars advertise hot food, shelter from possible foul weather, mixed drinks and fast service. What is the main idea of such advertisements? The sport or the alcohol? I've never seen Boomer Esiason blitzed at half time. If these two ideas are jointly related, why can't Boomer drink alcohol during the game?

As I stated earlier, all types of media portray a one-sided view. Children have a 35% chance of being an alcoholic if their

parents were alcoholics. Responsible drinking is knowing when and being capable of stopping before a person becomes a danger to himself or to others. Why doesn't the media show a fight breaking out in a bar? Have you ever seen a beer commercial that showed a person being arrested for DUI after drinking that company's product? Maybe if we saw some of these commercials, we viewers might think before we drink.

**Dennis Keagle**  
Undeclared

First year student at NKU

## DISORDERS

from page 9

6. Does she experience frequent fluctuations in her weight?
  7. Has food become the dominant force in her life?
  8. Does she experience dizziness or fainting?
  10. Does she go to the bathroom immediately after eating?
  11. Does she have dental problems involving the loss of enamel?
- If you answered yes to some of the questions above, call the Eating Disorders helpline immediately at (513) 369 - 2626, or attend the activities scheduled for Eating Disorders Awareness Week.
2. Does she binge on food with a smooth texture that enables her to eat faster and induce vomiting?
  3. Does she make elaborate preparations in anticipation of a binge?
  4. Does she follow binges with self-induced vomiting, laxatives, diuretics, long periods of strenuous exercise or severe fasting?
  5. Does she prefer eating alone so others won't see how much she consumes?



FOODFRIGHT  
FOODFRIGHT  
FOODFRIGHT  
FOODFRIGHT  
FOODFRIGHT  
FOODFRIGHT  
FOODFRIGHT  
FOODFRIGHT

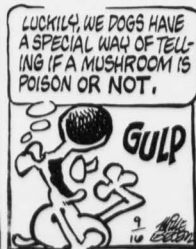
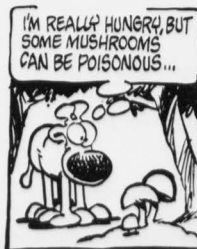
Foodfright is a cabaret of songs and vignettes about women's obsessions with food, weight, and body image. The event will take place on Wednesday, October 25 at 12:00 noon in the University Center Theatre. Foodfright is sponsored by APB and the Women's Center.





# Mother Goose & GRIMM

by Mike Peters



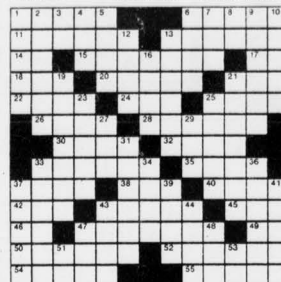
The  
Weekly  
Crossword  
Puzzle

**ACROSS**

- |                          |                            |
|--------------------------|----------------------------|
| 1 Part of chair back     | 37 Theater box             |
| 6 Assumed name           | 38 Uncooked                |
| 11 Costs                 | 40 Short jacket            |
| 12 The armpit            | 42 White House             |
| 14 Cooled lava           | 43 nickname                |
| 15 Entwined              | 45 Eskimo boat             |
| 17 Indian mulberry       | 46 Green letter            |
| 18 Possessive pronoun    | 46 River in Italy          |
| 20 Men                   | 47 Endurance               |
| 21 In favor of           | 49 Forenoon                |
| 22 Seines                | 50 Thoroughfare            |
| 24 Through               | 52 Having limits           |
| 25 Emerald Isle          | 54 Anglo-Saxon slaves      |
| 26 Drunkards             | 55 Fork prongs             |
| 28 Pagan                 | <b>DOWN</b>                |
| 30 Top of house          | 1 Country of Europe        |
| 32 Old name for Thailand | 2 Talks idly               |
| 33 Haphazard             | 3 Chinese distance measure |

## DOWN

- |                            |                   |
|----------------------------|-------------------|
| 1 Country of Europe        | 4 Perform         |
| 2 Talks idly               | 5 Athletic group  |
| 3 Chinese distance measure | 6 Cutting tools   |
|                            | 7 Cover           |
|                            | 8 Negative prefix |



**Learn about Market Research  
and get paid for it!**



# Burgoyne

**Part-Time Employment Available**

Our telephone research center has immediate openings for telephone interviewers. No selling, strictly market research.

**We offer:**

- Paid Training Classes
- Free Parking
- Competitive Wages
- Flexible Working Hours
- And Much More

Our interviewers conduct surveys about consumer products and services nationwide. Anyone interested should apply at our downtown offices between 9 a.m. and 5:30 p.m.

One Centennial Plaza  
705 Central Ave. 5th Floor  
Cincinnati, Ohio 45202

The Northerner

October 25, 1989

# Classifieds

**NKU CAMPUS A.A. MTG** every Thursday A.H.C. Rm 206A (the only requirement for membership is the desire to stop drinking).

**TYPING, EDITING** - Marilyn Shaver Call 441-4332.

**MICHELLE W.,**

Tonight's the night. Your hint is: My real sister shares your name.

**WORK PART TIME AND EARN FULL TIME WAGES** setting appointments by phone. \$5 per hr. plus \$5 per hour bonus available. Work mornings or evenings. Call Crest Mortgage Company 282-0618.

**FRATERNITIES, SORORITIES, CAMPUS ORGANIZATIONS, HIGHLY MOTIVATED INDIVIDUALS** - travel free plus earn up to \$3000+ sponsoring trips: Cancun trips - South Padre Island - Colorado Ski. 1-800-258-9191.

**MANSION HILL TAVERN** needs bartenders/bartenders. Flexible hours. Call Lou at 431-9542 between 11:00 a.m. and 3:00 p.m.

**"CAMPUS REPS NEEDED"** earn big commissions and free trips by selling Nassau/Paradise Island, Cancun, Mexico, Jamaica & Ski trips to Vermont & Colorado. For more information call toll free 1-800-344-8360 or in Ct. 203-967-3330.

**OFF CAMPUS HOUSING** roommate wanted inquire at 282-8331.

**SPRING BREAK 1990** - Individual or student organization needed to promote our Spring Break trips. Earn money, free trips and valuable work experience. **APPLY NOW!!** Call Inter-Campus Programs: 1-800-327-6013.

**FEMALE NON-SMOKER** to share house 150 rent + deposit 1/3 utilities, by hwy 27 & 275, 491-4554 evenings.

**MODELS WANTED:** Females needed to model for local cable access show. *Suit Yourself.* Also needed, females for national poster and calendar companies. No experience necessary. Free model composites. No fee! Contact John Gabbard at Teakwood Productions - 651-0606.

**FOOTBALL:** Yes, it true. Pikes - 31 over ATO - 7.

**TRICK OR TREAT THE MIXER WAS NEAT. ADG'S CAN'T BE BEAT! LOVE, PHI SIGMA SIGMA PAPERS, RESUMES TYPED**  
Advice on grammar & style  
Warren Word Processing  
84 Geiger Avenue, Bellevue  
Fast, reasonable  
Call Jo Anne Warren 491-5414 evs.

**PROFESSIONAL TYPING!**  
Reasonable  
961-1921  
Lonely? Need a Date?  
Meet that special someone today!  
Call DATETIME  
(405) 366-6335.

**PEACHES,**  
Old peaches never get old, they just get fuzzier. Happy Halloween!

**The Bad Group**

**PIKES WANT:** A Competent team to give PIKE A a good football game.

**CREATIVE WRITING SEMINAR**  
Guaranteed help for creating exciting stories. For more information call 491-3051.

**MARKET DISCOVER CREDIT CARDS ON YOUR CAMPUS:** Flexible hours. Earn as much as \$10/hr. Only ten positions available. Call 1-800-950-8472, Ext. #3.

**SPRING BREAK \*\* Cancun w/air - 7 nts \$299- \$549 \*\* South Padre Island Condos - 7 nights from \$139 \*\* Book now - space very limited. Also, organize a small group and go free! 1-800-258-9191.**

**HELP WANTED:** Spend a few hours after studies stuffing envelopes. make \$1,000's! Earn \$500 for every 100 envelopes stuffed! Send self addressed stamped envelope to: "Easy Money" - Dept. 11189 Post Office Box 642311, Chicago, Illinois 60664-2311.

**HEY OHIO JACK!** Thanks for being such a wonderful friend. You're definitely our favorite OHIO GUY (along with Brad)!

Love,  
**The Kentucky Women**  
Lori, Susan & Tina

**Do You Want VISA & MasterCard Credit Cards?**

Now You Can Have Two of the most recognized and accepted credit cards in the world - VISA® and MasterCard® - all cards, "in your name" EVEN IF YOU ARE NEW TO CREDIT or HAVE BEEN TURNED DOWN BEFORE!

VISA® and MasterCard® the credit cards you deserve and need for:

- DEPARTMENT STORES • TUTOR • ENTERTAINMENT • EMERGENCY CASH • TICKETS • RESTAURANTS • HOTELS • GAS • CAR RENTALS • REFUELS • AND TO BUILD YOUR CREDIT RATING!

**10th Year!** **GUARANTEED! GOLD CARD VISA/MasterCard GUARANTEED ISSUE OR MONEY BACK**

Approved absolutely guaranteed as money. If not, our card today. Your credit cards are waiting.

**A GARSEAU, Student Services**  
P.O. BOX 130306, SUNRISE, FL 33313

**YES!** I want VISA/MasterCard credit cards. Enclosed find \$15.00 which is 100% refundable if not approved immediately.

NAME \_\_\_\_\_

ADDRESS \_\_\_\_\_

CITY \_\_\_\_\_ STATE \_\_\_\_\_ ZIP \_\_\_\_\_

PHONE # \_\_\_\_\_

SOC. SECURITY # \_\_\_\_\_

SIGNATURE \_\_\_\_\_

MAIL THIS NO RISK COUPON TODAY

**A FREE GIFT JUST FOR CALLING PLUS RAISE UP TO \$1,700.00 IN ONLY TEN DAYS!!!** Student groups, fraternities and sororities needed for marketing project on campus. For details plus a FREE GIFT, group officers call 1-800-950-8472, ext.

**TYPING:** \$2.00 per page. Next day turnaround. Call Mary Fangman at 341-8313.

**EARN EXTRA MONEY FOR CHRISTMAS.** Toys 'R' Us, next to Eastgate Mall needs good seasonal help. Flexible hrs., night shift available. Apply during store hours. Join "R" team.

**HELP WANTED:** Market DISCOVER credit cards on your campus. Flexible hours. Earn as much as \$10.00 per hour. Only 10 positions available. Call 1-800-950-8472 ext. 4.

**WANTED:** Campus Representative or organization to promote Spring Break trip to Daytona Beach, FL. Earn extra money and free trips while gaining valuable business experience. Call Kurt with Travel Associates at 1-800-558-3002.

**W. DAVID,**  
Rockin' around the old oak tree  
Have a Happy Halloween  
Handcuffs hung were Davids can see  
Every druid has to stop. Happy Halloween!  
**The Bad Group**

**HIRING:** Ft. Mitchell Country Club: Experienced Broiler Cook, Waiters and Waitresses, Banquet Waiters and Waitresses. Call 331-1300.

**FOR SALE:**

1964 Chevelle S.S. Body in good condition. Asking \$2,000.00 Phone 534-5138.

**APARTMENT FOR RENT IN FORT THOMAS** Two bedroom, single bath, large kitchen and living room. 2nd floor. One month security deposit. \$350 + utilities. Call 781-0435 or 781-5264.

**HEY DELTS,**

We survived the witching hour! Thanks for a great mixer.

Love,  
**The Phi Sigs**

**COMPLETELY FURNISHED TRI-LEVEL CONDO** to share: female, non-smoker preferred; Prospect Point, Villa Hills area \$385/mo. 341-7424

**COOPERATIVE EDUCATION:** Get experience while you earn your degree - receive academic credit - part-time or full-time positions. Fall deadline, Nov. 3rd. See Mark C. DeChant, U.C. ext. 5681.

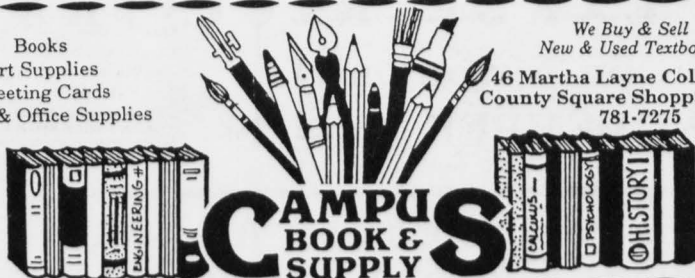
**HOW ABOUT SPENDING YOUR CHRISTMAS HOLIDAYS IN LONDON?** You can earn 3 credit hours studying in London, England for a surprisingly low cost! Program dates are December 26, 1989 to January 8, 1990. For more information, contact Dr. Jeffrey Williams (Landrum 438) at 572-5135 or Dr. Michael Klembara (BEP 301) at 572-6512.

**OWN YOUR OWN BUSINESS** \$25,000 + return within first year very possible. Minimal investment involved, and no franchise fee.

Send resume to P.O. Box 31, Highland Heights, Ky. 41076 for further details.

**WANTED:** Student with child-care experience, non-smoker wanted to care for infant in my home. Three nights a week including some weekends and holidays. Call 291-6608 after 5:00 p.m. Minimum wage, Hrs. are 9:30 p.m. - 8:30 a.m.

Books  
Art Supplies  
Greeting Cards  
School & Office Supplies





# **SPRING 1990**

---

**PRIORITY EARLY REGISTRATION**  
**OCTOBER 23 — NOVEMBER 10**

---

**EXTENDED EARLY REGISTRATION**  
**(in person only)**  
**NOVEMBER 20 — 29**

---

**Visit the Service Center, AC 301,  
or phone 572-5556 for details.**